

ChessZone Magazine



Table of contents: # 12, 2012

Games	4
(01) Vovk, Yuri (2592) - Vysochin, Spartak (2515) [B31]	4
(02) Zakhartsov, Viacheslav V (2531) - Dastan, Muhammed (2370) [D43]	5
(03) Vovk, Yuri (2592) - Sivuk, Vitaly (2482) [C54]	6
(04) Stefanova, Antoaneta (2491) - Socko, Monika (2445) [E47]	9
(05) Zhukova, Natalia (2451) - Ju, Wenjun (2501) [E71]	10
(06) Kosintseva, Nadezhda (2539) - Kosintseva, Tatiana (2515) [C15]	12
(07) Stefanova, Antoaneta (2491) - Harika, Dronavalli (2512) [D31]	14
(08) Harika, Dronavalli (2512) - Stefanova, Antoaneta (2491) [D45]	16
(09) Ushenina, Anna (2452) - Stefanova, Antoaneta (2491) [D15]	17
(10) Ushenina, Anna (2452) - Stefanova, Antoaneta (2491) [D45]	19
Editorial staff:	21

Dear readers!

**ChessZone Magazine is open for your advertising materials.
We have various ad packages at affordable rates!**

**We're also interested in cooperation with advertising agencies,
and could offer great commissions for anyone
who could bring an advertisers to us.**

Please contact us for details

chesszone@ya.ru

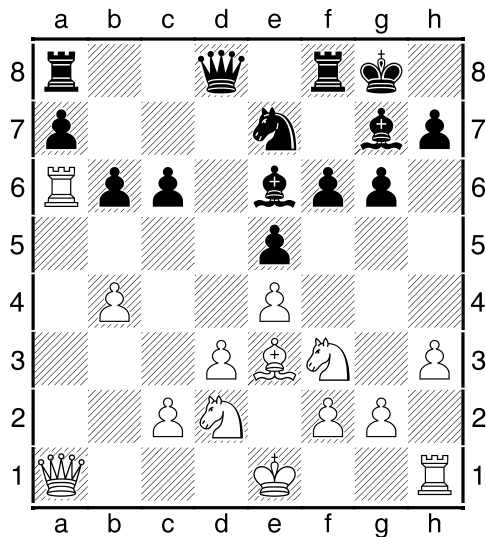
Games

(01) Vovk, Yuri (2592) - Vysochin, Spartak (2515) [B31]

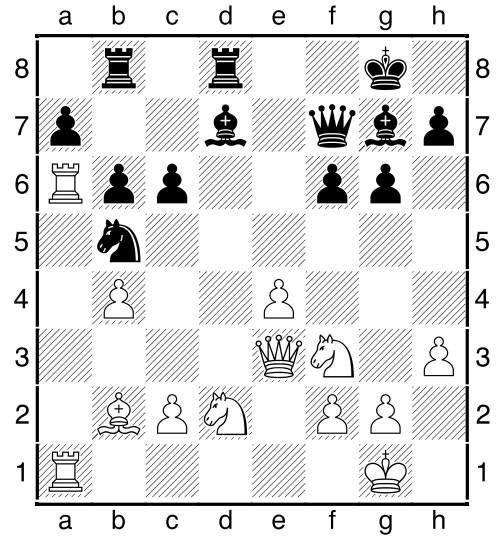
9th Vasylyshyn Memorial–GM Lviv (1),
20.11.2012

[IM Sitnikov, A]

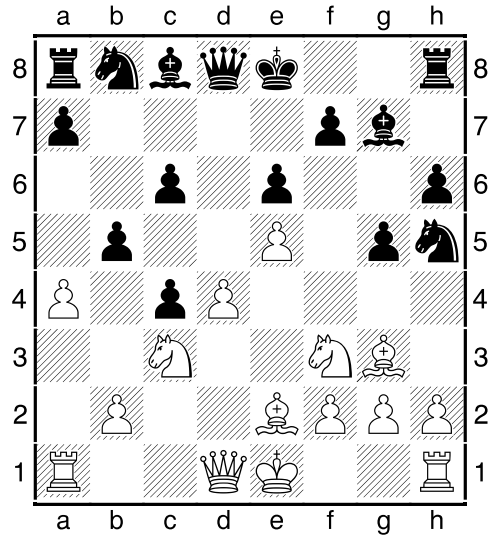
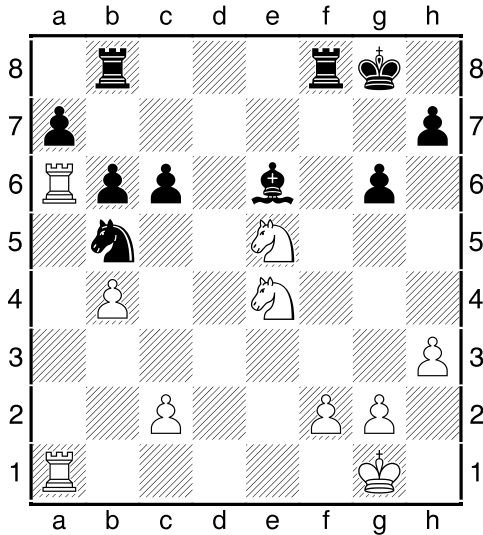
1.e4 c5 2.Nf3 Nc6 3.Bb5 g6 4.Bxc6 dxc6
5.d3 Bg7 6.h3 e5 7.Be3 b6 8.Nbd2 f6
9.a3 Be6 10.b4 cxb4 11.axb4 Ne7 12.Ra6
0-0 13.Qa1



13...Qb8 [In the single previous game black gave a pawn by 13...Bf7 and resigned soon / Van Haastert, E (2408) – Tonoli, B (2176) / Gent op 2007] 14.0-0 Qb7 15.Qa3 Nc8 16.Ra1 Rd8 17.Nc4 Rb8 18.Qc3 Qf7 19.Ncd2 Bd7 20.d4 exd4 21.Bxd4 Nd6 22.Qe3 Nb5 23.Bb2



23...Be6?! Black successfully organized a rearrangement of pieces, but now admit the mistake, which could be costly. Is quite understandable desire to prevent the movement c2–c4, but now the line "e" is blocked, and the central pawn rushes into attack. [Preferable 23...Bc8 24.R6a4 Rb7 with rooks interaction] 24.e5 Re8 25.exf6 Bxf6 26.Bxf6?! The response of courtesy white lose advantage. [After 26.Ne5 Qg7 27.f4 appears a powerful outpost e5 and white continue to increase pressure, attacking the weak pawn of the opponent and threatening Nd2–e4] 26...Qxf6 27.Ne4 Qg7 28.Qf4 Rf8 29.Qe5?! After queens exchange white lose only trump card – play on weak kingside. [It is quite reasonable looks 29.Qh4] 29...Qxe5 30.Nxe5



30...Rbe8! 31.c4? Picture of the battle changed, and white, not having time to recover from such turn of events, in one fell swoop make equal position into the lost one. [31.f3 Bc8 32.Ng4 Re7 33.R6a4 h5 34.Ngf2=] **31...Bxc4 32.Nxc4 Rxe4 33.Na3 Rxb4 34.Nxb5 Rxb5 35.Rxa7 Rf7** Here we can ring down the curtain. **36.Ra8+ Kg7 37.Rc8 c5 38.f3 Rb2 39.Re1 Rd7 40.f4 h5 41.Ree8 h4 42.Rg8+ Kf7 43.Rcf8+ Ke7 44.Re8+ Kf6 45.Rgf8+ Rf7 46.Rh8 c4 47.Rc8 b5 48.Rxh4 Rc2 49.Rc6+ Ke7 50.Rxg6 b4 51.Rb6 b3 52.Rh5 b2 53.Rhb5 c3 54.Rb7+ Kf8 55.Rb8+ Kg7 56.Rg5+ Kf6 57.Rb6+ Ke7 58.Rb7+ Kd6 59.Rb6+ Kc7 60.Rgb5 Rd7 61.Kh2 Rcd2 62.Rb7+ Kd8 63.Rb8+ Ke7 64.Re5+ Kf6 65.Rf8+ Rf7 66.Rb8 c2 67.Rb6+ Kg7 68.Rg5+ Kf8 69.Rb8+ Ke7 70.Re5+ Kd6 0-1**

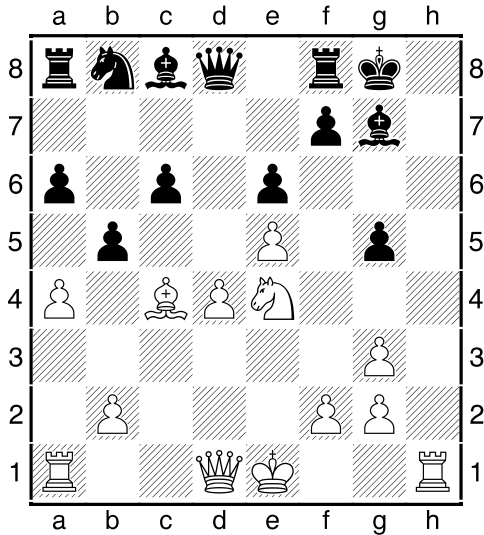
(02) Zakhartsov, Viacheslav V (2531) - Dastan, Muhammed (2370) [D43]

9th Vasylyshyn Memorial–GM Lviv (4), 23.11.2012

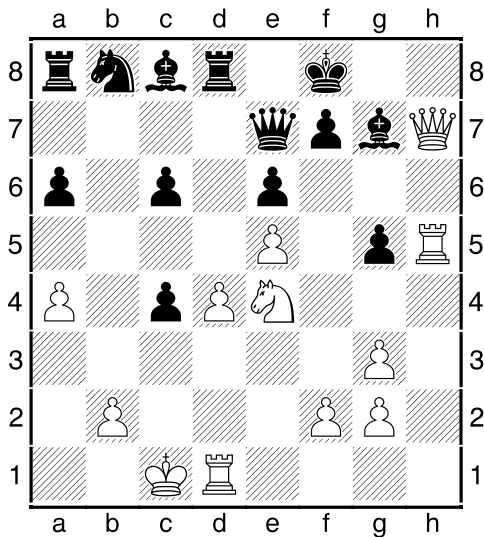
[IM Sitnikov, A]

1.d4 d5 2.c4 e6 3.Nf3 Nf6 4.Nc3 c6 5.Bg5 h6 6.Bh4 dxc4 7.e4 g5 8.Bg3 b5 9.Be2 Bg7 10.e5 Nh5 11.a4

11...a6N An interesting move, because now white optionally can just capture the pawn. Perhaps, black want to divert attention of the opponent from deployment initiatives on kingside. And if the white still bet on attack, in a number of variants black may have useful protective resource Ra8–a7. [This is a good illustration of a typical attacking ideas: 11...Qb6 12.Ne4 0-0? 13.Nfxg5 Nxc3 14.hxc3 Nd7 15.a5 Qc7 16.Qc2 Rd8 17.Nh7 c5 18.Nef6+ Nxf6 19.exf6 cxd4 20.Qe4 and black resigned / Henrichs, T (2428) – Van der Vliet, F (2356) / NED–chT 2000] **12.Ne4 0-0** Risky step! 15–year–old chessplayer goes the same fatal path, which killed Van der Vliet. To stay afloat, here is required from black jewelry accuracy, and by the monotonous ticking of the clock to demonstrate such a skill is not easy... **13.Nfxg5 Nxc3 14.hxc3 hxc3 15.Bxc4**



15...Qe7 [The accepting of the second sacrifice allowed to white slowly apply pressure, including into attack all the possible resources: 15...bxc4 16.Qh5 Re8 17.Qh7+ Kf8 18.Rh5 f6 19.exf6 Bxf6 20.Rh6 Bg7 21.Ra3 Ra7 22.Rf3+ Rf7 23.Rxf7+ Kxf7 24.Qg6+ Kf8 25.Nxg5 Qe7 26.Nh7+ Kg8 27.Ng5 Kf8 28.Rh4 e5 29.Kf1 Qb7 30.Nh7+ Ke7 31.Nf6 Bxf6 32.Rh7+ Kd8 33.Rxb7 Bxb7 34.Qxf6+ Re7 35.Qd6+ Nd7 36.Qb4 Nf6 37.dxe5 Ne4 38.Kg1 and in this unusual position, in spite of the rough material equality, black is hopelessly due to poor pieces coordination] **16.Qh5 Rd8 17.0-0-0 bxc4 18.Qh7+ Kf8 19.Rh5**



19...f5? And now – black twitched. [Hardly

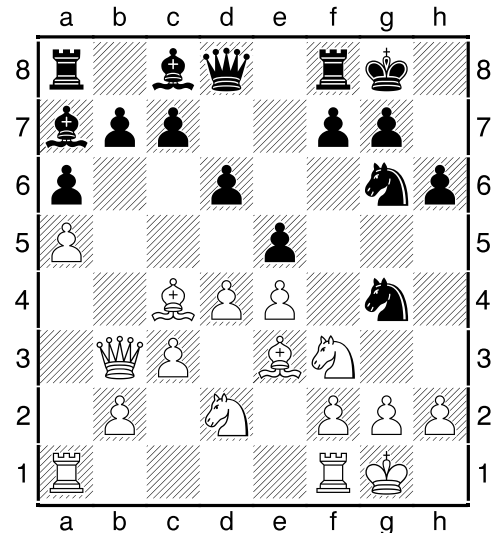
white can achieve more than draw after 19...Nd7 20.Rdh1 c3 21.Rxg5 cxb2+ 22.Kb1 f6 23.Qh8+ Bxh8 24.Rxh8+ Kf7 25.Rh7+ Kf8 26.Rh8+ Kf7] **20.Nxg5 Qe8?!** [And after 20...Bxe5 white bent his line: 21.Qg6 Qe8 22.Nh7+ Ke7 23.Qg5+ Kd6 24.dxe5+ Kc7 25.Qg7+ Nd7 26.Ng5! Qxh5 27.Nxe6+ Kb6 28.Nxd8 Nc5 29.a5+ Kb5 30.Qc7 Nb3+ 31.Kc2 Qe2+ 32.Kc3 Nxa5 33.Qe7 c5 34.Qe8+ Kb6 35.Rd6+ Ka7 36.Qe7+ Bb7 37.Rd2 Qe1 38.Qxc5+ Kb8 39.Qxa5 winning] **21.Rh6 Ra7 22.Rg6 Qxg6 23.Qxg6 c5 24.Rh1 Nc6 25.Nh7+ Kg8 26.Nf6+ Kf8 27.Rh8+ 1-0**

(03) Vovk, Yuri (2592) - Sivuk, Vitaly (2482) [C54]

9th Vasylyshyn Memorial–GM Lviv (8), 27.11.2012

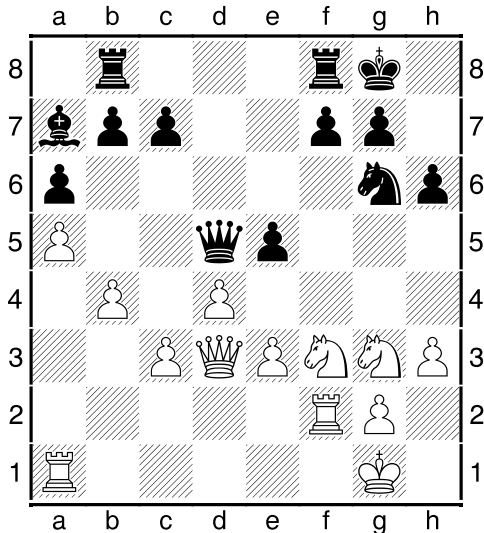
[IM Sitnikov, A]

1.e4 e5 2.Nf3 Nc6 3.Bc4 Bc5 4.c3 Nf6 5.d3 a6 6.0-0 d6 7.a4 Ba7 8.Be3 h6 9.Nbd2 0-0 10.a5 "Prepare sleighs in summer!" White captures space and ensure the most favourable configuration of pawn structure, which may be useful in the endgame... **10...Ne7 11.d4 Ng4 12.Qb3 Ng6**

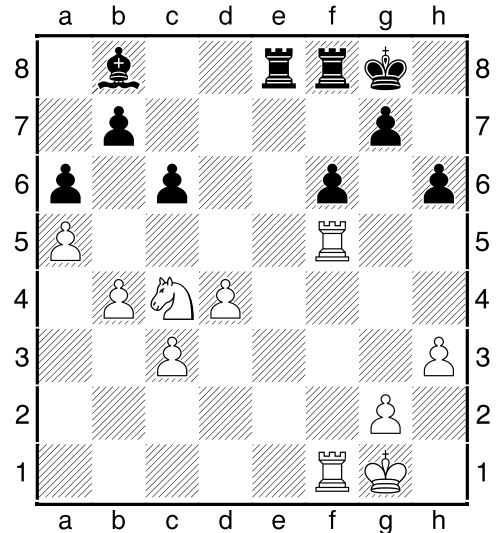


13.h3 White voluntarily give to opponent the advantage of two bishops, and in return gets a solid center, opened line and convenient pieces play. It should be noted that in such conditions the black bishops are deprived of real prospects. **13...Nxe3**

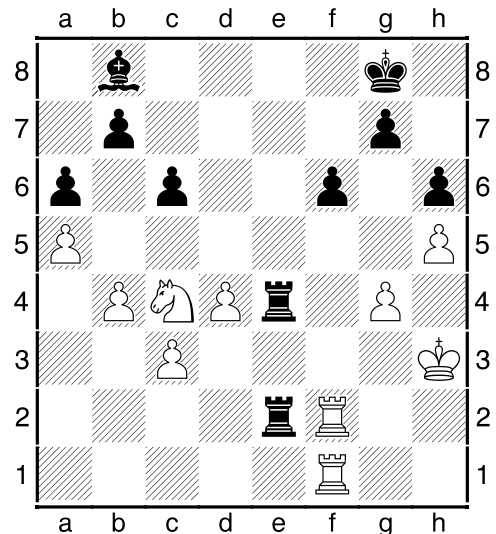
14.fxe3 Qe7 15.Rf2 Rb8 16.Nf1 Be6
 Pressure on f7 becomes unbearable and black forced to leave the bishop a7 alone...
 [Of course, was bad naive attempt to win pawn: 16...exd4 17.exd4 Qxe4? 18.Bxf7+ Rxf7 19.Qxf7+ Kxf7 20.Ng5+] **17.Ng3 Bxc4 18.Qxc4 Qe6 19.Qd3** As known, queen perfectly interacts with knights, so white evade exchange. **19...d5 20.exd5 Qxd5 21.b4**



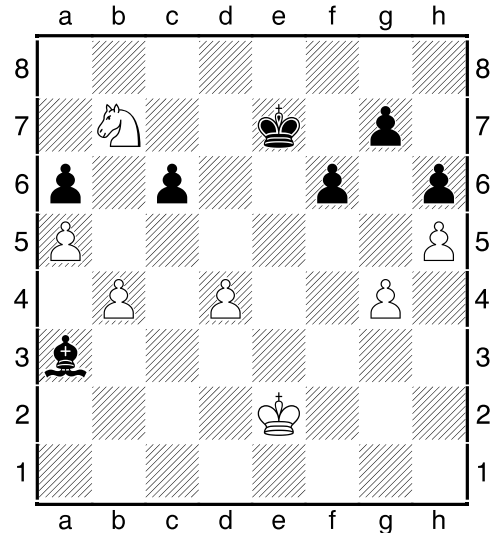
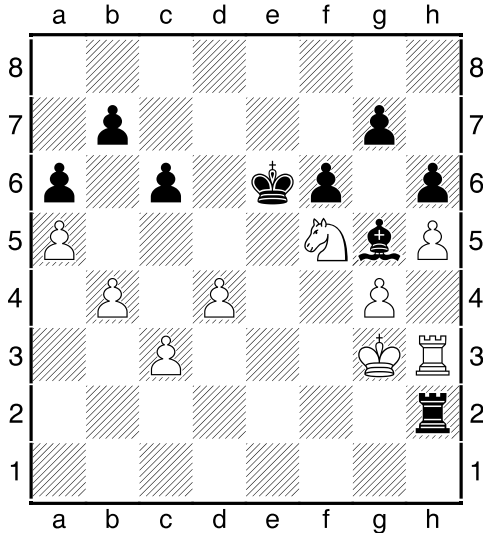
The centre has kept its strength. Black bishop can be recovered only by c7-c6, but then the pawn structure on queenside becomes absolutely static and can manifest himself a target for attack. **21...Rbe8 22.Nd2 exd4 23.exd4 c6 24.Nf5 Bb8 25.Raf1 Ne7 26.Qc4** White didn't wait for the appearance of black queen in his residence (h2) and go to exchange, but then black seize line "e" and activate all combat units. It can be stated that the black worthy decided debut tasks. **26...Qxc4 27.Nxc4 Nxf5 28.Rxf5 f6**



29.g4?! [Maybe black would already show a reasonable caution and prepare the exchange of a pair of rooks by 29.Kf2] **29...Rf7 30.Kg2 Rfe7 31.h4 Re4 32.Kh3 Re2 33.R5f2 R8e4 34.h5**

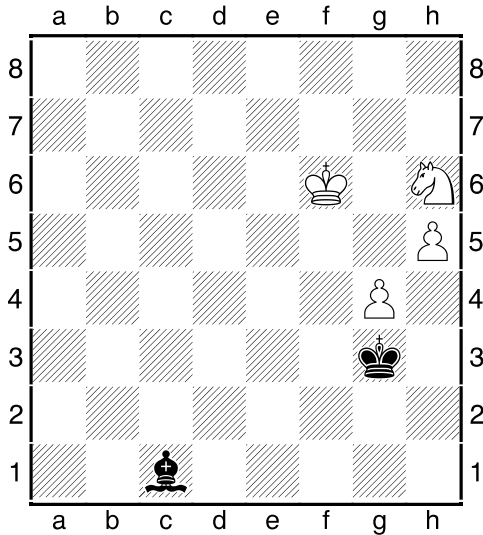


White reached the ideal pawns arrangement on both sides! Obviously, to this end, they sought from the very beginning of the game. But in this case the activity of the black pieces becomes more significant factor. If the white could now on the wave of a wand rearrange the king on the d3 – then the position had to be assessed a completely different way. **34...Kf7 35.Kh4 Ke6 36.Kh3 Bc7 37.Kh4 Ke7 38.Rxe2 Rxe2 39.Rf3 Ke6 40.Ne3 Bf4! 41.Nf5 Rh2+ 42.Rh3 Bg5+ 43.Kg3**



43...Rc2?! Sign doubt – not for the quality of move, but the lack of practical expediency. At the end of the important game at the finish of the tournament strength exhausted and nerves are stretched to the limit. Therefore, black would use every opportunity to simplify the game. [Black receive technically winning endgame after 43...Rxb3+ 44.Kxb3 Kd5 45.Kg3 (45.Nxg7 Kc4 46.Nf5 Kxc3 47.Nd6 Kxd4 48.Nxb7 Kc4 49.Nd8 Kxb4 50.Nxc6+ Kb5) 45...Bd2 46.Kf3 Bxc3 47.Nxg7 Bxb4 48.Nf5 Bd2 49.Ke2 Bg5 50.Kd3 c5] **44.Rh1 Rxc3+ 45.Kf2 Rc1?** Only now black recall simplifications, but not in time. The white king is already actively involved in the game. A perfect example on the theme of "the activity is more important than material." [The rook with bishop excellent interact, and led to the victory 45...Rb3 46.Re1+ Kd5 47.Re7 Rxb4 48.Kf3 Rb3+ 49.Ke2 Ra3 50.Rxb7 Rxa5] **46.Rxc1 Bxc1 47.Ke2 Kf7?** [The battle ended in draw after 47...Ba3 48.Nxg7+ Kf7 49.Nf5 Bxb4 50.Nxh6+ Kf8 51.Kd3 Bxa5 52.Nf5 b5 53.Ke4 Bb4 54.d5 cxd5+ 55.Kxd5 a5 56.Nd4 a4 57.Nxb5 a3 58.Nxa3 Bxa3 59.Ke6 Bb2 60.Kf5] **48.Nd6+ Ke7 49.Nxb7 Ba3**

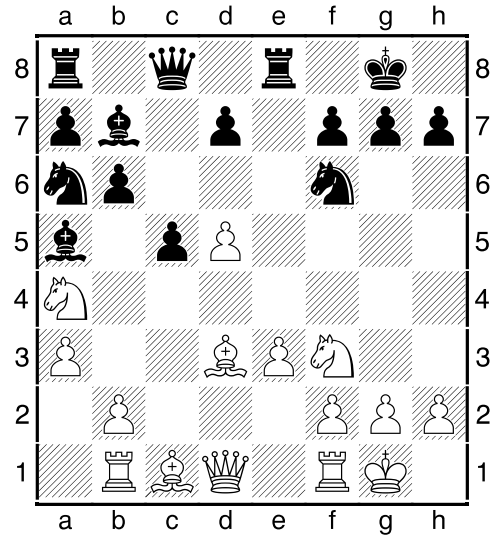
50.d5! Now make themselves aware of the peculiarities of pawn structure, which we spoke earlier. **50...Bxb4** [As hopelessly 50...cxd5 51.b5 Kd7 (51...Bd6 52.Nxd6 Kxd6 53.b6 Kc6 54.Kd3 Kd7 55.Kd4 Kc6 56.b7 Kxb7 57.Kxd5 Kc7 58.Kc5+-) 52.bxa6 Kc7 53.Nd8 Kb8 54.Nc6+ Kc7 55.Nd4 Bb4 56.Ne6+ Kb8 57.Nxg7 Ka7 58.Nf5 Bf8 59.Kd3 Kxa6 60.Kd4+-] **51.dxc6 Bd6 52.Kd3 Bc7 53.Ke4 Ke6 54.Nc5+ Kd6 55.Nxa6 Bxa5 56.c7 Kd7** [Harder was 56...Bxc7 57.Nxc7 Kxc7 58.Kf5 Kd6 59.Kg6 Ke5 60.Kxg7 f5 61.g5 f4 62.gxh6 f3 63.h7 f2 64.h8Q f1Q and white still need to demonstrate the accuracy in queen endgame] **57.Kf5 Bc3 58.Nc5+ Kxc7 59.Ne6+ Kd6 60.Nxg7 Bb2 61.Kg6 Ke5 62.Nf5 Kf4 63.Nxh6 Bc1 64.Kxf6 Kg3**



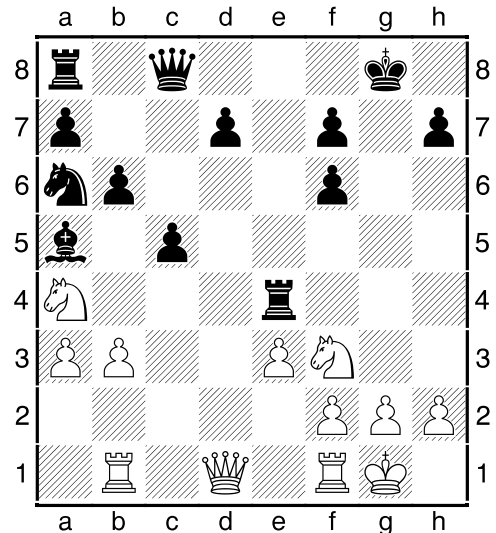
65.Kf5! Keeping alive both passed pawns.
65...Bxh6 66.g5 Bf8 67.h6 Kh4 68.Kg6 Bb4 69.h7 Bc3 70.Kh6 Kg4 71.g6 Bd2+ 72.Kg7 Kg5 73.Kf7 Bc3 74.g7 The tragedy of one move! Only a little time didn't have enough for black, to rush the king into h6. **1-0**

(04) Stefanova, Antoaneta (2491) - Socko, Monika (2445) [E47]
 WWCC 2012 Khanty-Mansiysk,
 18.11.2012
[IM Sitnikov, A]

In the second half of November, the focus of the chess public was drawn to Khanty-Mansiysk, where was the world women championship by the knock-out system. The audience had the opportunity to see a lot of exciting battles, in a number of games players managed to shine by debut erudition. **1.d4 e6 2.c4 Nf6 3.Nc3 Bb4 4.e3 0-0 5.Bd3 c5 6.Nf3 b6 7.0-0 Bb7 8.Na4 Na6 9.a3 Ba5 10.d5 exd5 11.cxd5 Re8 12.Rb1 Qc8**

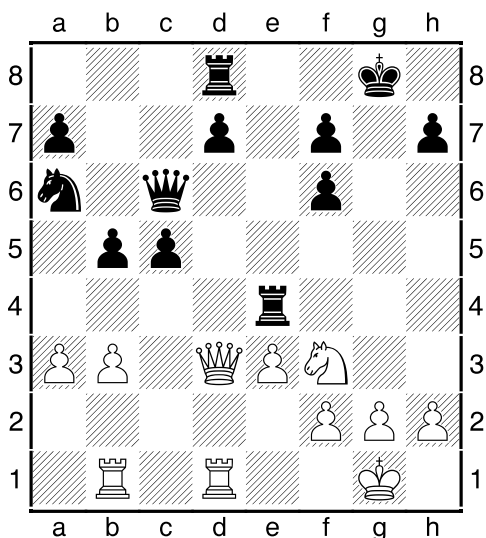


13.b3N [In this position white sacrificed a pawn, but didn't managed to prove its correctness: **13.e4 Nxe4 14.Bxe4 Rxe4 15.Ng5 Rh4 16.g3 Rxa4 17.Qxa4 h6 18.Ne4 Bxd5 19.Nf6+ gxf6 20.Qg4+ Kf8 21.b4 cxb4 22.Qf5 Be6 23.Qxf6 Qc3 24.Bxh6+ Ke8** / Palliser, R (2342) – Rogers, J (2329) / ENG County-ch 2001] **13...Bxd5?!** It is extremely risky capture. [Black is good after **13...b5 14.Bxb5 Nc7 15.Bd3 Ncxd5 16.Qc2 d6 17.e4 Nb6 18.Nxb6 Bxb6**] **14.Bb2 Be4 15.Bxf6 gxf6 16.Bxe4 Rxe4**

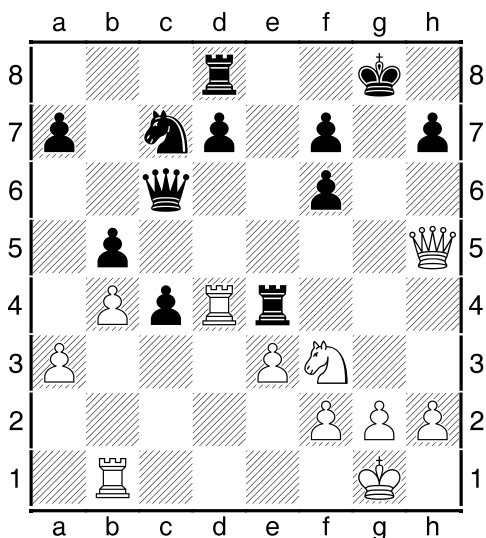


Even with naked eye visible defects of black position. White easily and naturally reinforces his pieces. **17.Qd3 Qb7 18.Rfd1 b5 19.Nc3 Bxc3 20.Qxc3 Qc6 21.Qd3**

Rd8



22.b4 [Very vigorously looks also 22.Rbc1 with the threat Nf3-d4] **22...c4 23.Qd5 Ree8** [Even after queens exchange black faced with very difficult problems: 23...Qxd5 24.Rxd5 Nc7 25.Rc5 Rc8 26.Rd1 d5 27.Nd4 a6 28.Nf5 Re5 29.e4+-] **24.Qh5 Nc7 25.Rd4 Re4**

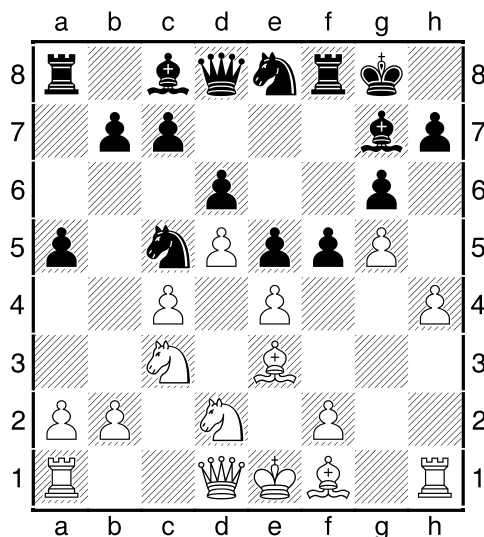


26.Ng5! fxc5 27.Qxc5+ Qg6 28.Qxc6+ hxc6 29.Rxe4 Kf8 30.Rd1 d5 31.Red4 Ra8 32.e4 dxe4 33.Rxe4 a5 34.Re5 Lack of material sometimes offset by the powerful central outpost for the knight – for example, near isolated pawn. But here we see that black pieces are bound protection. **34...axb4 35.axb4 Ne6 36.Rxb5 c3 37.Kf1**

Rc8 38.Rbd5 Rc4 39.b5 Ke7 40.g3 Nc5 41.Re1+ Kf6 42.Rd6+ Kf5 43.Rc6 c2 44.Rc1 Ke4 45.b6 Kd5 46.Rc8 Rb4 47.Rxc2 Ne6 48.Rb8 g5 49.h3 Ke4 50.Kg2 Ke5 51.Rd2 Nc5 52.Rc8 Ne4 53.Re8+ Kf5 54.Rd5+ 1-0

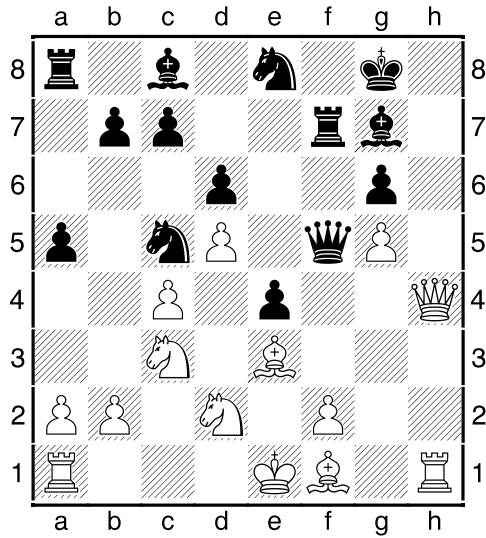
(05) Zhukova, Natalia (2451) - Ju, Wenjun (2501) [E71]
 WWCC 2012 Khanty-Mansiysk,
 18.11.2012
[IM Sitnikov, A]

1.d4 Nf6 2.c4 g6 3.Nc3 Bg7 4.e4 d6 5.h3 0-0 6.Be3 e5 7.d5 Nbd7 8.Nf3 Nc5 9.Nd2 a5 10.g4 Ne8 11.h4 f5 12.g5

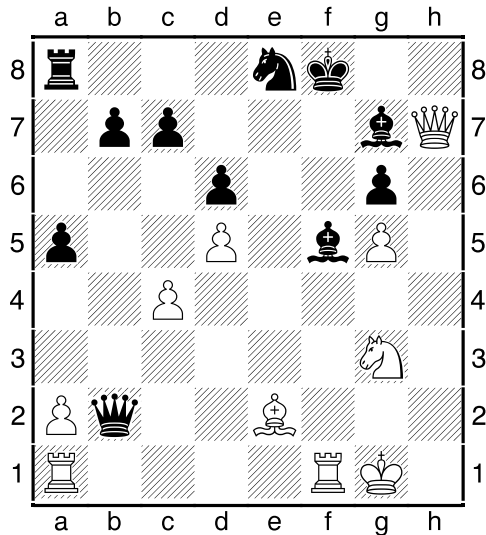


White restrict several enemy pieces. This idea has been known since the times of Petrosian, his virtuoso playing made a big problem for the admirers of Kings-Indian defence. Find organize counterplay black here is very difficult, as demonstrated by statistics: in board position white won 7 of 8 games. **12...Rf7N** [The characteristic feature of the variation – white possess spatial majority of the entire board and can run the game on several fronts, which illustrates well: 12...Nxe4 13.Ndxe4 fxe4 14.Bg2 Bf5 15.h5 Rf7 16.Bxe4 Qd7 17.hxc6 hxc6 18.Qf3 Bxe4 19.Qxe4 Qf5 20.Qh4 Qc2 21.Rc1 Qxb2 22.Qe4 Rf5 23.Rc2 Qb4 24.Ke2 a4 25.Rb1 Qa5 26.Rxb7 and the black has no useful moves / Barsov, A (2425) – Hausrath, D (2320) / Oberliga NRW 1994] **13.h5 Bf8**

14.hxg6 hxg6 15.Qf3 Qd7 16.exf5 Qxf5
17.Qg3 e4 18.Qh4 Bg7

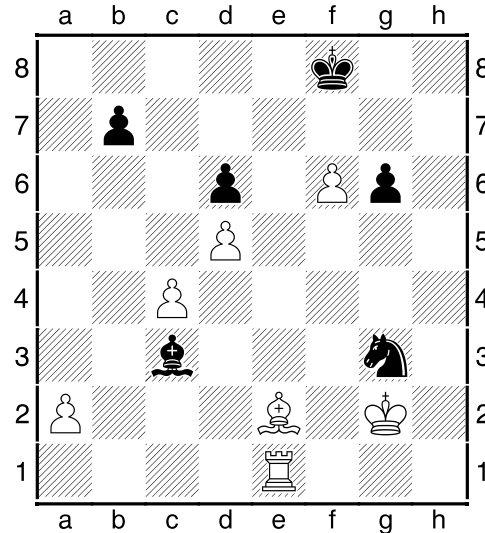


19.Ndxe4 [Without risk keeps all the advantages of position after 19.0-0-0]
19...Nxe4 20.Nxe4 Re7 21.Bd3 Qf3
22.Nd2 Rxe3+ 23.fxe3 Qxe3+ 24.Be2 Bf5
25.Nf1 Qe5 26.Ng3 Now it is clearly seen that the efforts of blacks were in vain. The fault of the disabled on last horizontal.
26...Qxb2 27.Qh7+ Kf8 28.0-0

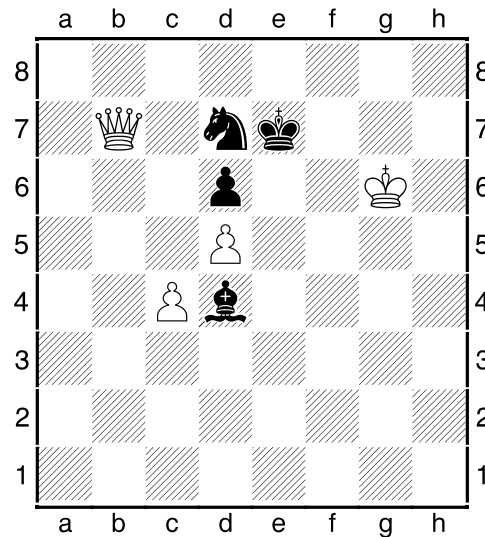


Finally, at the 28th move, white castled, and can now begin the harvest. 28...Bd4+
29.Kh1 Ng7 30.Qh8+ [There are many roads to victory, and white miss finish the game by direct attack: 30.Qxg6 Qxa1 31.Nxf5+~]
30...Ke7 31.Qxa8 Be5

32.Qxa5?! Significantly complicates the implementation. [After brave 32.Rab1 Qd4 33.Qh8 Bxg3 34.Rxb7 Be4+ 35.Rf3 Bxf3+ 36.Bxf3 black loses] 32...Bxg3 33.Qxc7+ Ke8 34.Rxf5 Nxf5 35.Qc8+ Kf7 36.Qe6+ Kf8 37.Qf6+ Qxf6 38.gxf6 Be5 39.Re1 Ng3+ 40.Kg2 Bc3

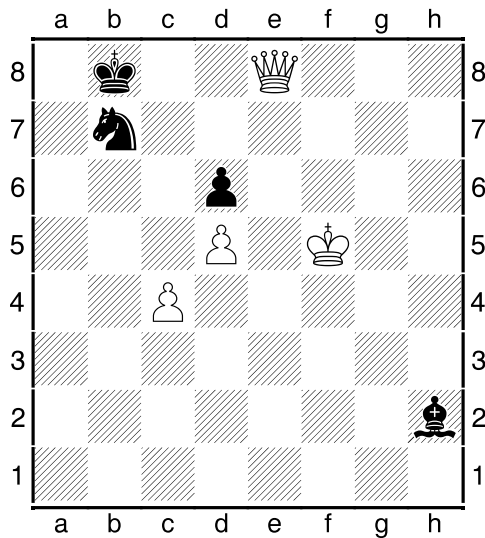


Suddenly white loses all accumulated material. Well, in the backlog remains strong passed pawn... 41.Rb1 Nxe2 42.Rxb7 Bxf6 43.a4 Nf4+ 44.Kf3 Nd3 45.a5 Nc5 46.Ra7 Bd8 47.a6 Bb6 48.Ra8+ Ke7 49.a7 Nd7 50.Kf4 Ne5 51.Re8+ Kxe8 52.a8Q+ Ke7 53.Qb7+ Nd7 54.Kg5 Bd4 55.Kxg6



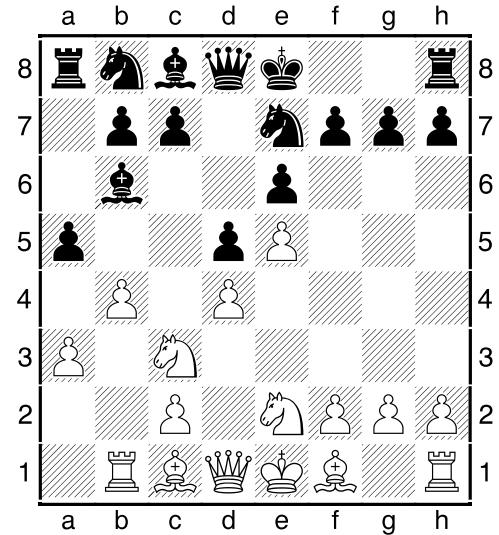
Black erected a fortress, and white still

have to sweat in search of assault.
55...Bc5 56.Kf5 Bd4 57.Qc8 Be5 58.Qg8 Nc5 59.Qa8 Nd7 60.Qa7 Ke8 61.Qg1 Ke7 62.Qg5+ Ke8 63.Qh4 Nc5 64.Kg6 Nd7 65.Qf2 Nf8+ 66.Kf5 Nd7 67.Qa7 Bh2 68.Qc7 Be5 69.Qc8+ Ke7 70.Qg8 Nc5 71.Qh7+ Ke8 72.Kg6 Kd8 73.Kf7 Kc7 74.Ke8+ Kb6 75.Qb1+ Kc7 76.Qb5 Nb7 77.Qc6+ Kb8 78.Qb6 Kc8 79.Ke7 Nc5 80.Qa7 Nb7 81.Ke6 Nd8+ 82.Kf5 Nb7 83.Qb6 Bh2 84.Qc6+ Kb8 85.Qe8+

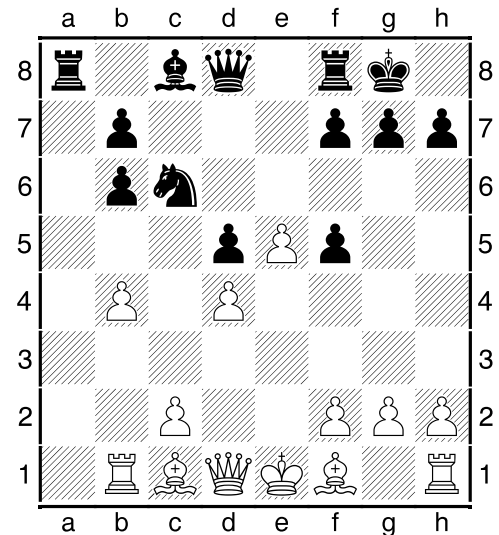


85...Ka7? [It is not clear how to win in the case of **85...Kc7 86.Ke6 Be5 87.Qc6+ Kb8 88.Kd7 Nc5+ 89.Ke7 Bg3**] **86.Ke6 Nc5+ 87.Ke7 Kb7 88.Kd8** Unfortunate position of black bishop leads the army to catastrophe. **88...Be5 89.Qb5+ Ka7 90.Kc8 Bf4 91.Qb8+ Ka6 92.Kc7 Ne6+ 93.dxe6 1-0**

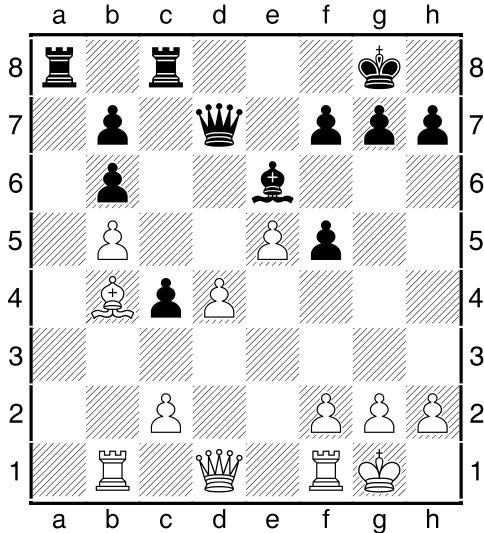
(06) Kosintseva,Nadezhda (2539) - Kosintseva,Tatiana (2515) [C15]
 WWCC 2012 Khanty–Mansiysk,
 19.11.2012
 [IM Sitnikov, A]
1.e4 e6 2.d4 d5 3.Nc3 Bb4 4.Nge2 Ne7 5.a3 Ba5 6.b4 Bb6 7.e5 a5 8.Rb1



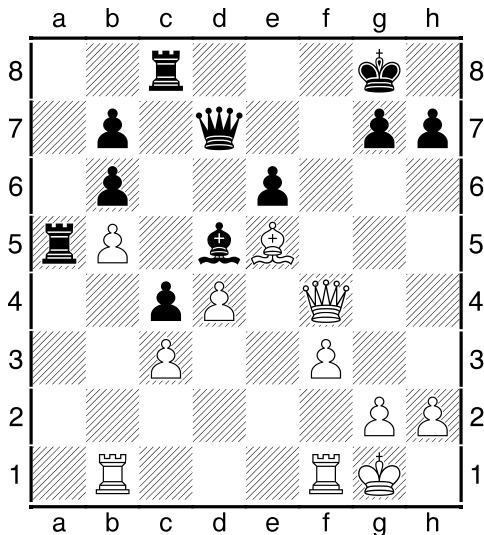
8...Nf5N It seems that blacks just forgot to pre-change pawns. [After **8...axb4 9.axb4 Nf5 10.Qd3 Nc6 11.Nb5 f6 12.f4 fxe5 13.dxe5 0-0 14.g3 Qe7 15.Bd2 Bd7 16.Bh3 Be8 17.Bxf5 Rxf5 18.Ned4 Nxd4 19.Nxd4 Rf8 20.Be3 Bg6 21.Qb3 c5 22.bxc5 Bxc5** black achieved significant advantage / Veroci, Z (2415) – Brkovic, Z (2350) / Banja Luka 1987] **9.Na4 axb4 10.Nxb6 cxb6 11.axb4 0-0 12.Ng3 Nc6 13.Nxf5 exf5**



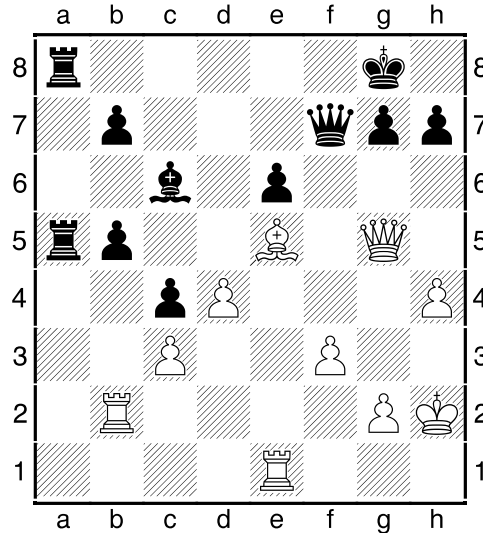
As a result of the experiment is formed unusual position with two sets of dual pawns in black. In addition, white have paired bishops. And nevertheless, black retain a good play. **14.b5 Na5 15.Be2 Be6 16.0-0 Qd7 17.Bd2 Rfc8 18.Bb4 Nc4 19.Bxc4 dxc4!**



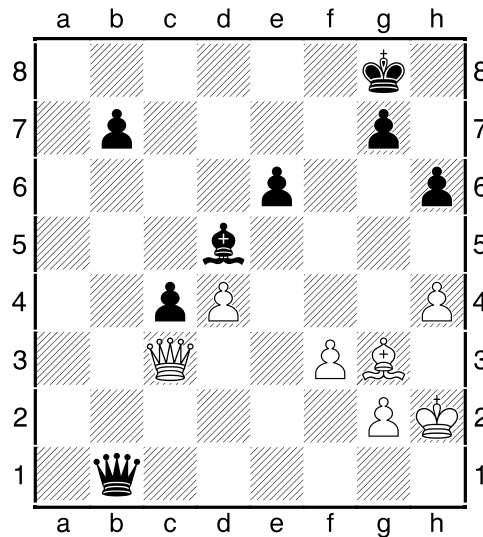
It would seem illogical taking, overriding line "c". But instead expanding the scope of bishop action. Most likely, white will play f2–f3 , and in future this weakening may play a role. **20.Bd6 Bd5 21.c3 f4 22.f3 Qf5 23.Qd2 Ra5 24.e6 fxe6 25.Qxf4 Qd3 26.Be5 Qg6 27.Qg3 Qf7 28.Qf4 Qd7**



It is interesting to compare the effectiveness of bishops. White seems to be actively, but nobody helps him. For the attack on g7 lack of resources. Here are visible effect of the movement f2–f3 : white cannot follow Rb1–e1–e3–g3 in conjunction with the march of "h" pawn. **29.Qg5 Rca8 30.h4 Ra3 31.Rbc1 Rb3 32.Kh2 Rxb5 33.Ra1 Rba5 34.Rab1 b5 35.Rb2 Bc6 36.Re1 Qf7**

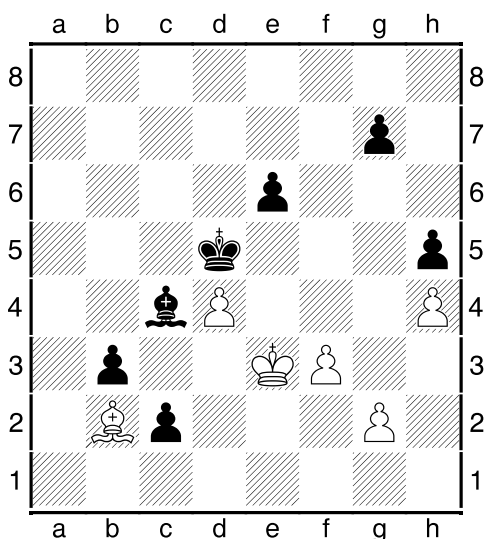


Perhaps the position is equal, but the practical chances clearly for black. He may threaten seizure of the second horizontal and attack pawn c3 , and in good time even make b5–b4 . But in the game these subtleties remained behind the scene. Tired of long battle, white does mistake. **37.Bd6? b4 38.Qe3 bxc3** [Probably, stronger was 38...b3 and in the disposal of black appears formidable passed pawn, which is supported by bishop] **39.Qxc3 Bd5 40.Qe3 h6 41.Reb1 Ra2 42.Qd2 Rxb2 43.Rxb2 Qf6 44.Bg3 Ra1 45.Qc3 Rd1 46.Rd2 Rf1 47.Rf2 Rxf2 48.Bxf2 Qf5 49.Bg3 Qb1**

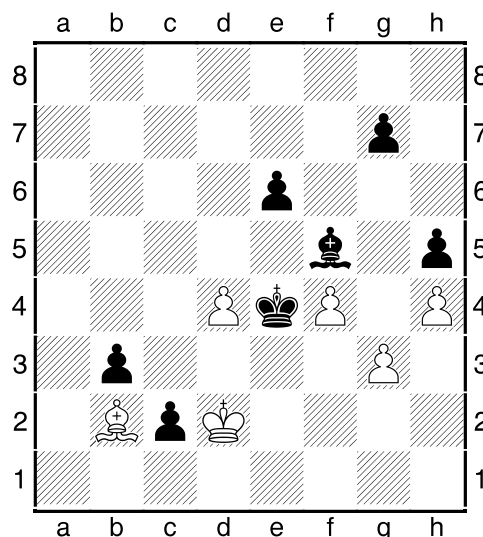


Whether black break through the defens-

es?.. 50.Bd6 Qa2 51.Kg3 Qe2 52.Bf4 Kh7
 53.Bd2 Qd1 54.Qc1 Qb3 55.Qc3 Qb1
 56.Kh2 Kg6 57.Qe3 b5 58.Qe1 Qd3
 59.Bc3 Kf7 60.Qd2 Qf5 61.Qe3 Kg8
 62.Qe5 Qd3 63.Bb4 c3 64.Qc7 c2 65.Bd6
 Qg6 66.Bf4 Kh7 67.Qc3 h5 68.Bc1 Qf5
 69.Bg5 Bc4 70.Bc1 Kg6 71.Qd2 Kf7
 72.Kg3! Qg6+ 73.Kf2 Qf5 74.Qe3 b4
 75.Qf4! Pulling the king closer to the place
 of events, white speed up the transition to
 the drawn endgame. However, the way to
 overcome some reefs... 75...Qxf4 76.Bxf4
 b3 77.Bc1 Ke7 78.Ke3 Kd6 79.Bb2 Kd5



[79...Bf1 80.g4 Kd5 81.gxh5 Bg2 82.Kd3!
 Bxf3 83.Bc1 Bxh5 84.Kc3 Bg6 85.Bb2 Ke4
 86.Bc1=] 80.g3? Fatal blunder, creating
 holes in his own defense. [80.Kd2 Bf1
 81.Kc3 Bxg2 82.Kxb3 Bxf3 83.Kxc2 g5
 84.hxg5 h4 85.Bc1 Kxd4 86.Bf4 Ke4
 87.Bh2 Kf5 88.Kd2 Kxg5 89.Ke3 Bc6
 90.Bd6 Kf5 91.Kf2 e5 92.Be7 h3 93.Kg3
 Bg2 94.Bc5 Ke4 95.Kf2 Bf3 96.Kg3 Bg4
 97.Ba3 Kd3 98.Bd6 Kd4 99.Kf2 e4 100.Bf4
 Bd7 101.Bc1 Kd3 102.Bf4 and black is not
 able to strengthen the position] 80...Bb5
 81.Kd2 Kc4 82.Ba1 Bc6 83.f4 Be4
 84.Bb2 Bf5 85.Ba1 Kd5 86.Bb2 Ke4



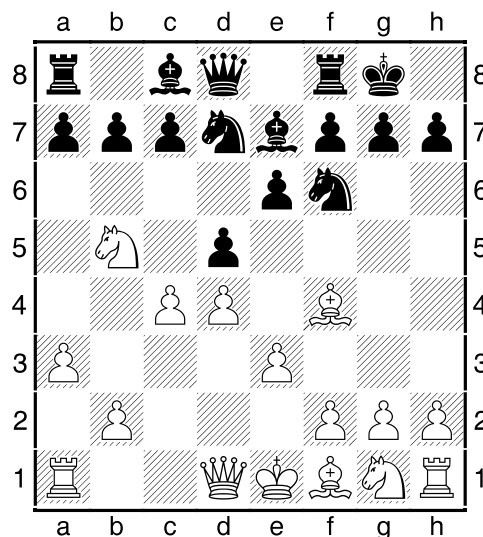
87.Kc3 Kf3 88.Kxb3 Kxg3 89.Kc3 Kxh4
 90.Kd2 Kg3 0-1

(07) Stefanova, Antoaneta (2491) - Harika, Dronavalli (2512) [D31]

WWCC 2012 Khanty-Mansiysk,
 23.11.2012

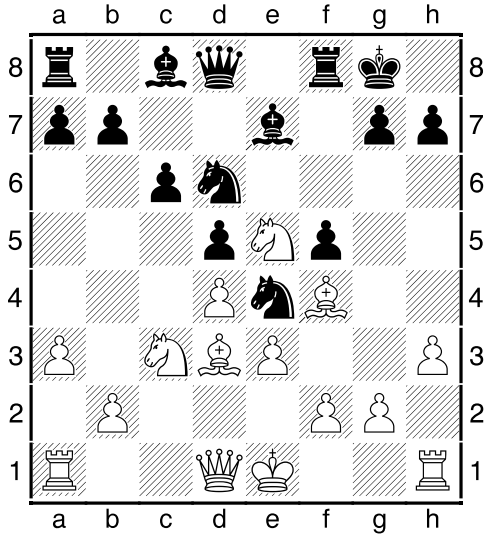
[IM Sitnikov, A]

1.d4 e6 2.c4 d5 3.Nc3 Be7 4.Bf4 Nf6 5.e3
 0-0 6.a3 Nbd7 7.Nb5!?

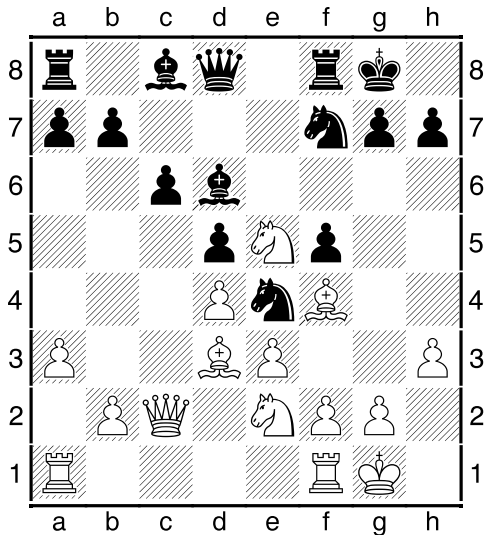


Cavalry swoop white hinder the opponent
 promotion c7-c5 , and also receive the op-
 portunity to freely develop the second
 knight. In the case of an immediate 7. Ng1-
 f3 might be Nf6-h5 with unclear play.
 7...Ne8 8.Nf3 c6 9.Nc3 Now black at
 crossroads. He can with a permutation of

moves to reduce the case to the well-known Carlsbade structure, or proceed to acute Dutch structure. 9...f5 10.h3 Nd6 11.cxd5 exd5 12.Bd3 Nf6 13.Ne5 Nfe4

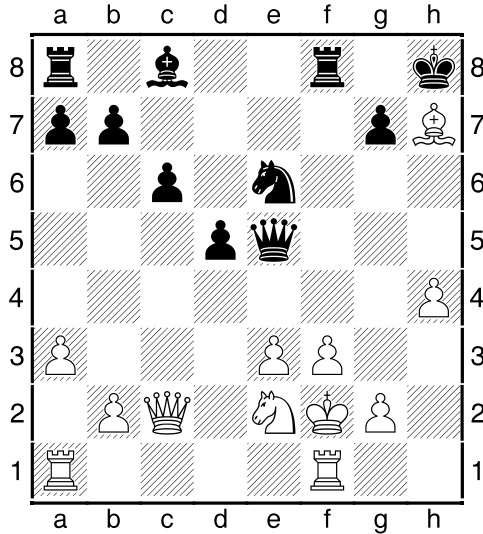


14.Ne2! Avoiding exchange, white keeps the saturation of position, and soon center comes to movement. 14...Nf7 15.0-0 Bd6 16.Qc2?!

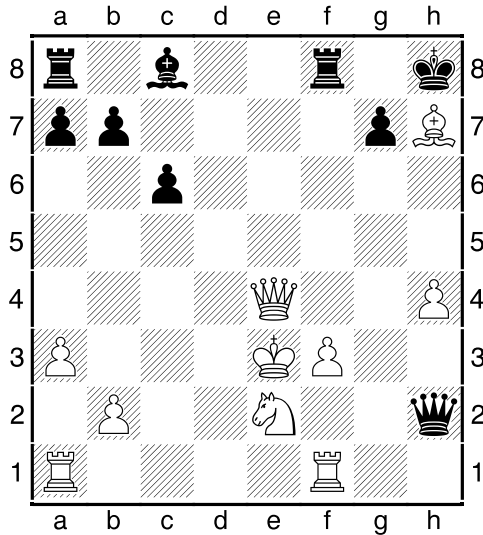


[Immediately realizing the main idea by 16.f3 Bxe5 17.dxe5 Nc5 18.Bc2 Qe7 19.b4 Nd7 20.e6 Qxe6 21.Nd4 Qf6 22.Bxf5 Nde5 23.Bc2 white is better due to presence of strong paired bishops and mobile center] 16...Qf6?! [Black pity of bishop, in vain! After 16...Bxe5 17.dxe5 Qe7 18.f3 Nc5 19.Bxf5 Bxf5 20.Qxf5 Nd7 21.Qd3 Nfxe5

22.Qd4 Nc4 23.e4 Qc5 black successfully solved all problems] 17.f3 Neg5 18.h4 Ne6 19.Bxf5 Nxe5 20.Bxh7+ Kh8 21.dxe5 Bxe5 22.Bxe5 Qxe5 23.Kf2

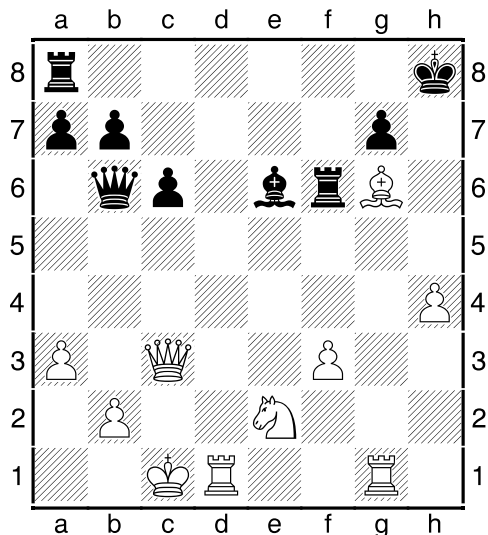


Without prejudice! The important pawn must be saved, and the king take personal part in the battle! 23...d4 24.exd4 Nxd4 25.Qe4 Nxf3 The only possibility to confuse the game. Wanting to play endgame without pawn there is quite a bit. 26.gxf3 Qh2+ 27.Ke3



27...Bd7 [White would be more difficult to avoid all the traps, searching for the narrow path by only moves, in the case of 27...Be6 28.Bg6 Bd5 29.Qe7 Qg2 30.Nf4 Rxf4 31.Kxf4 Qxg6 32.Rg1 Qh6+ 33.Kg3 Qh5

34.Kh2 Rg8 35.Rg5 Qxh4+ 36.Kg2+-]
28.Rad1 Qc7 Winning the queen turned to
 black into loss of half army. **29.Qc2 Bh3**
30.Rg1 Qb6+ **31.Kd2 Be6 32.Qc3 Rf7**
33.Bg6 Rf6 34.Kc1



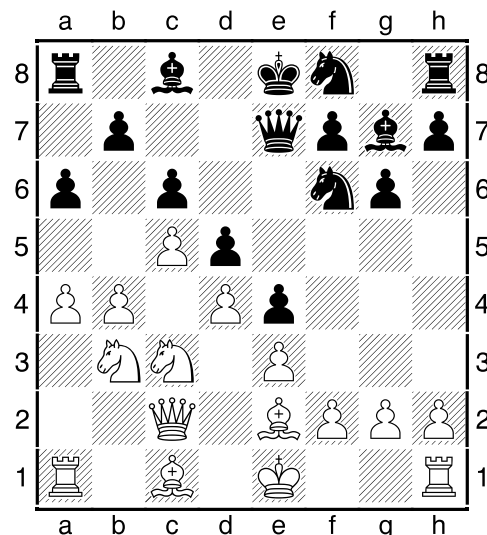
The engineers helped the king successfully through the minefield. Now on the board is position of "long castle", and black can resign. **34...Qf2 35.Qe5 Kg8 36.Nd4 Ba2 37.Bb1 Bd5 38.Rdf1 Qxh4 39.Rxg7+ 1-0**

(08) Harika,Dronavalli (2512) - Stefanova,Antoaneta (2491) [D45]

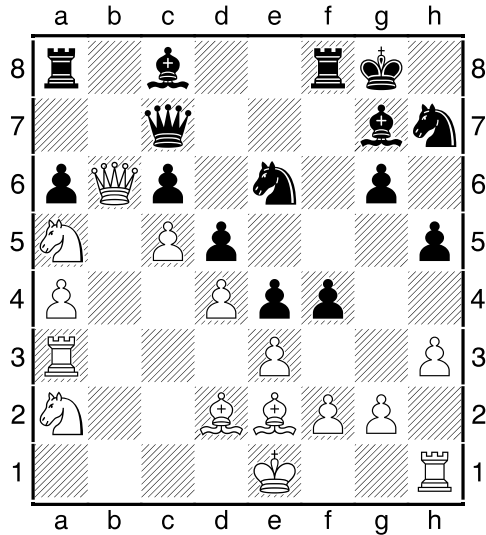
WWCC 2012 Khanty-Mansiysk, 24.11.2012

[IM Sitnikov, A]

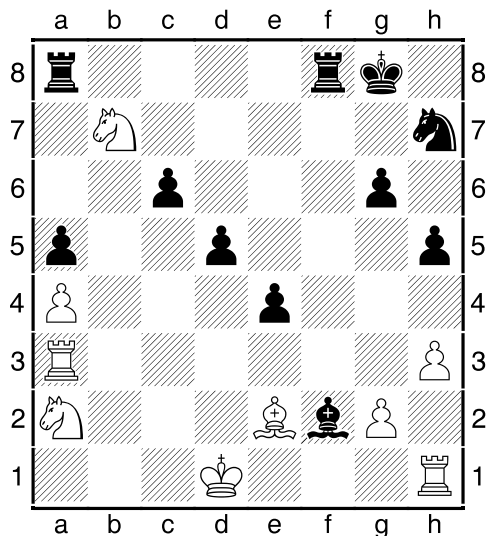
1.d4 d5 2.c4 c6 3.Nc3 Nf6 4.e3 e6 5.Nf3 a6 6.c5 Nbd7 7.Qc2 Qe7 8.b4 e5 9.Be2 e4 10.Nd2 g6 11.Nb3 Bg7 12.a4 Nf8



[How dangerous initiative of white on the queenside, shows the game 12...0-0 13.b5 h5 14.bxc6 bxc6 15.Na5 Nb8 16.Bd2 Bg4 17.Qb3 Bxe2 18.Nxe2 Ra7 19.Rb1 Nfd7 20.Nb7 h4 21.h3 f5 22.Nd6 g5 23.f4 exf3 24.gxf3 Kh8 25.Qd3 Qe6 26.Rg1 Bh6 27.Kd1 a5 28.f4 gxf4 29.Nxf4 Bxf4 30.exf4 and white won soon / Nguyen, C (2345) – Thesing, M (2396) / Liechtenstein op 25th 2007] **13.Ra3?!** Rivals attack at different flanks, and in such cases the slightest delay – like death. Much more energetic played white in game from the previous note. Most likely, now they don't want to lose the tempo by retreat of knight in variation 13. b5 ab 14. ab R:a1 15. N:a1 – but instead white received more space for maneuvers on queenside. **13...Ne6 14.b5 0-0 15.bxc6 bxc6 16.Na2 h5 17.h3?!** The second inaccuracy, seeks white in a critical situation. More chances left 17. Bd2 ... **17...Nh7 18.Bd2 f5 19.Na5 Qc7 20.Qb1 f4 21.Qb6**

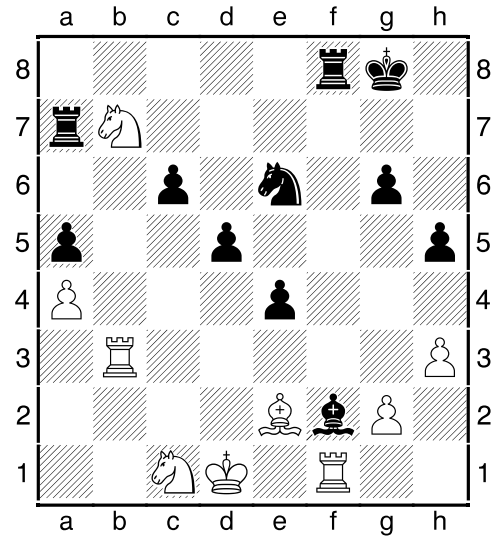


On this move white pinned their hopes, but black time to time. **21...fxe3 22.Bxe3 Qxb6 23.cxb6 Nxd4! 24.b7** [Has not helped 24.Nb4 Nxe2 25.Kxe2 d4 26.Nbxc6 dxe3 27.Rxe3 Nf6 28.Rb3 Nd5 29.b7 Bxb7 30.Rxb7 Nf4+ 31.Ke3 Nxg2+ 32.Kxe4 Rxf2+] **24...Bxb7 25.Bxd4 Bxd4 26.Nxb7 Bxf2+ 27.Kd1** Three connected passed pawns more than enough to compensate the missing figure. The white army can not coordinate. If black connect to the game his knight, the fate of the game will be solved. **27...a5**



28.Nc1? [The situation requires action! It was necessary 28.Rf1! Ra7 29.Nd8! Rxd8 30.Rxf2 although there after 30...Kg7 31.Nc1 Nf6 32.Rc3 Rd6 white can dream

only about peaceful end] **28...Ra7 29.Rb3 Ng5 30.Rf1 Ne6**



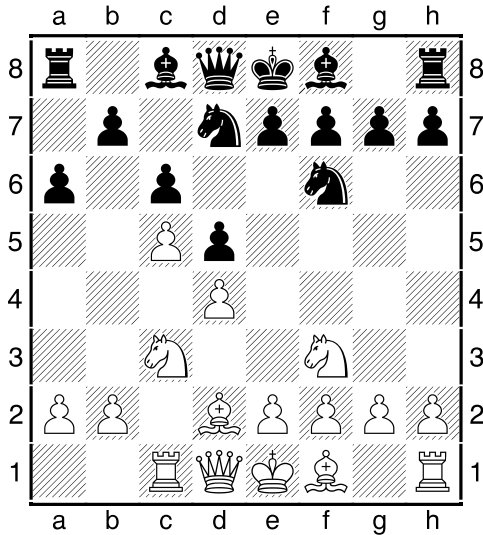
All black figures occupy ideal positions, and white became hopeless. **31.Nd6 Nc5 32.Rb6 Rc7 33.Ne8 Rc8** A draw in this game guarantee for Bulgarian chessplayer coming into the final part of the Championship, and rational approach prevailed. [Without a doubt, black won by 33...Nxa4 34.Ra6 Re7 35.Nd6 Nc3+ 36.Kd2 d4] **34.Nd6 Rc7 35.Ne8 Rc8 36.Nd6 SS**

(09) Ushenina,Anna (2452) - Stefanova,Antoaneta (2491) [D15]

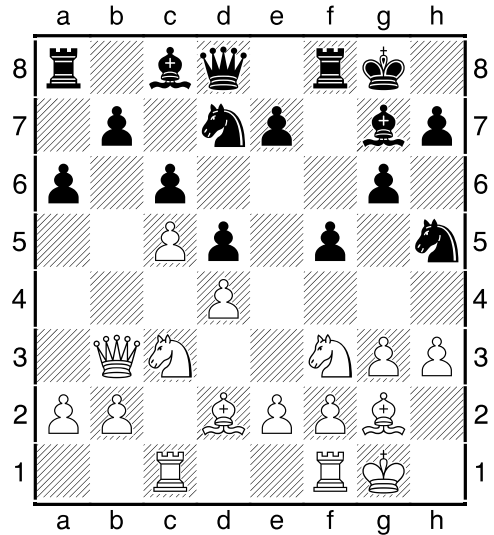
WWCC 2012 Khanty–Mansiysk, 29.11.2012

[IM Sitnikov, A]

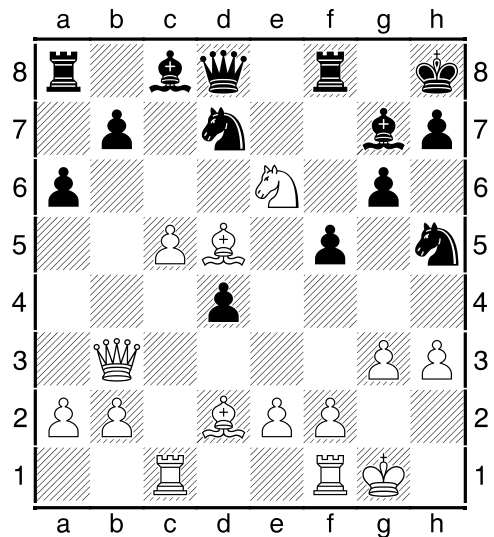
1.d4 d5 2.c4 c6 3.Nf3 Nf6 4.Nc3 a6 5.c5 Nbd7 6.Bf4 Nh5 7.Bd2 Nh6 8.Rc1!



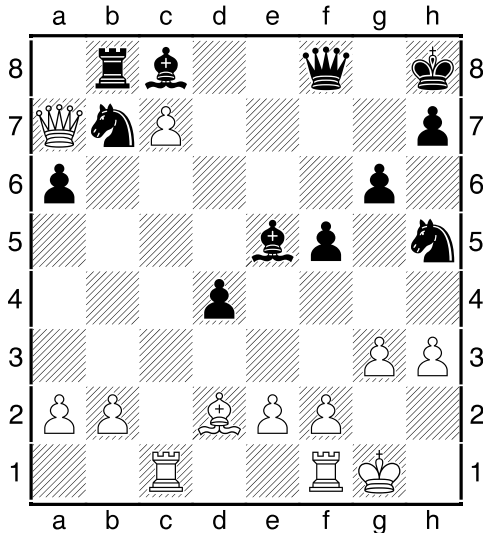
This move for the first time was applied in 2003, by the German grandmaster Alexander Graf, but in tournament practice widely included only three years later, thanks to convincing victories by Veselin Topalov. Modest rook move has a deep meaning: beats black's desire to play b7-b6, and also supports a pawn c5 in case of center opening. Appreciate this idea we can later... **8...g6** [8...e5 9.Nxe5 Nxe5 10.dxe5 Ng4 11.Na4! Nxe5 12.Bc3 f6 13.Nb6 Rb8 14.Nxc8 Rxc8 15.g3 Qd7 16.h4 Qf7 17.Bh3 Nd7 18.b4 Rd8 19.f4! Be7 20.h5 with strong paired bishops and vast space advantage / Topalov, V (2804) – Bacrot, E (2708) / Sofia MTel Masters 2nd 2006] **9.h3 Qc7 10.g3 Bg7 11.Bf4 Qd8 12.Bg2 0-0 13.0-0 Nh5 14.Bd2 f5 15.Qb3**



15...e5? It is quite natural blow to the centre. But now, strangely enough, black lose almost forced! [Even after a relatively better 15...Kh8 16.Na4 e5 17.dxe5 Nxe5 18.Nxe5 Bxe5 19.e3 white has stable advantage / Nechepurenko, R (2510) – Kobalia, M (2634) / RUS-ch Higher League 60th 2007] **16.Ng5 exd4 17.Nxd5 cxd5 18.Bxd5+ Kh8 19.Ne6**



19...Qf6N [White wins and after 19...Qe7 20.c6! bxc6 21.Bb4 Qf6 22.Rxc6 Bb7 23.Nxf8 Bxc6 24.Nxd7 Bxd5 25.Qxd5 Qd8 26.Rc1 / Braun, A (2533) – Laznicka, V (2601) / Wch U20 2008] **20.Nxf8 Qxf8 21.Bxb7 Rb8 22.c6 Nc5 23.Qb6 Nxb7 24.Qa7! Be5 25.c7**

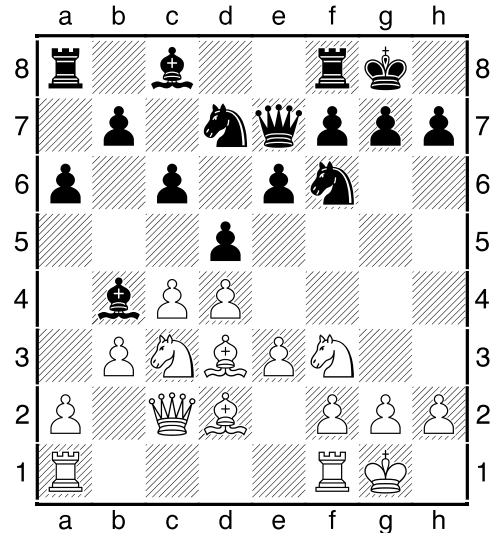


White pieces are amazingly smoothly, as upscale the orchestra under the guidance of an experienced conductor! Note that the last move was made possible by rook, which occupied the readiness position on 8th move! **25...Ra8 26.Qxa8 Qe8 27.Qxa6** An extensive material advantage is implemented clearly. **27...Nc5 28.Qa8 Ne4 29.Rc2 Nxd2 30.Rxd2 Kg7 31.Rc2 Kh6 32.b4 Bd6 33.Qd5 Nxg3 34.Qxd6 Nxf1 35.Qxd4 g5 36.Qf6+ Kh5 37.Rc6 1-0**

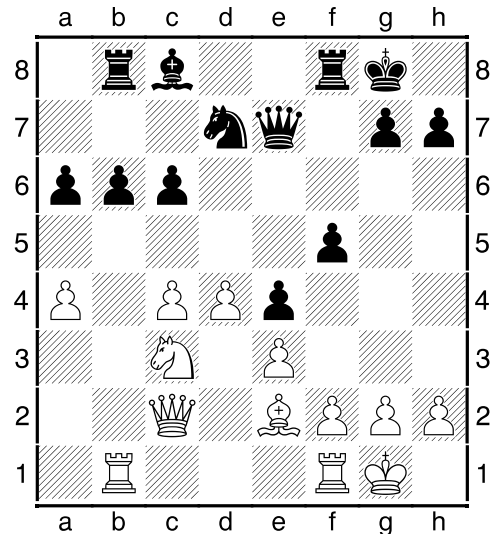
(10) Ushenina, Anna (2452) - Stefanova, Antoaneta (2491) [D45]
 WWCC 2012 Khanty-Mansiysk,
 01.12.2012

[IM Sitnikov, A]

By the victory in this game, Anna Ushenina won the title of World women chess champion! **1.d4 d5 2.c4 c6 3.Nf3 Nf6 4.Nc3 e6 5.e3 a6 6.b3 Bb4 7.Bd2 Nbd7 8.Bd3 0-0 9.0-0 Qe7 10.Qc2**

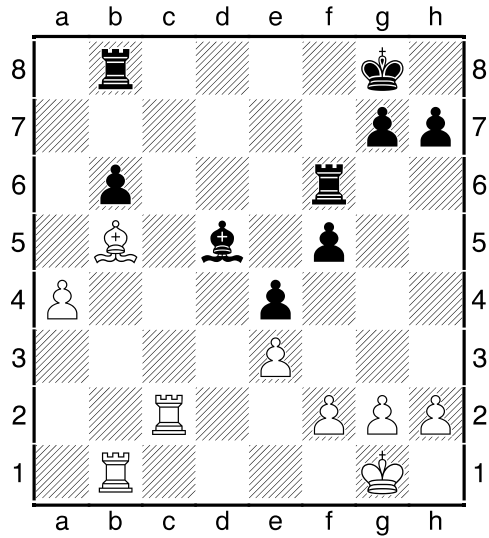


10...dxc4 [Recently, more preference is given to 10...e5] **11.bxc4 e5 12.Ne4 Bxd2 13.Nfxd2 Nxe4 14.Nxe4 f5 15.Nc3N e4 16.Be2** Probably, black here would very much like to return some pawns at starting lines... **16...b6 17.Rab1 Rb8 18.a4**

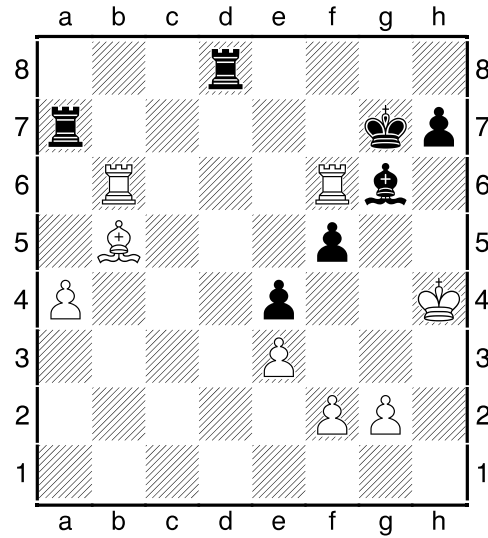


Looking on the choice of the debut, black decided not to risk in decisive game. But did passive protection gives you more chances than playing on a collision course?! Look at the position: the movement f5-f4 hardly will be possible, and on the queenside white simple means increasing the pressure. **18...Nf6 19.Rb2 Be6 20.Rfb1 Qc7 21.d5 cxd5** [To the same effect leads 21...Bf7 22.dxc6 Qxc6 23.Nd5 Nxd5 24.cxd5 Qxd5 25.Rxb6 Rxb6

26.Rxb6±] 22.cxd5 Nxd5 23.Nxd5 Qxc2
24.Rxc2 Bxd5 25.Bxa6 Rf6 26.Bb5

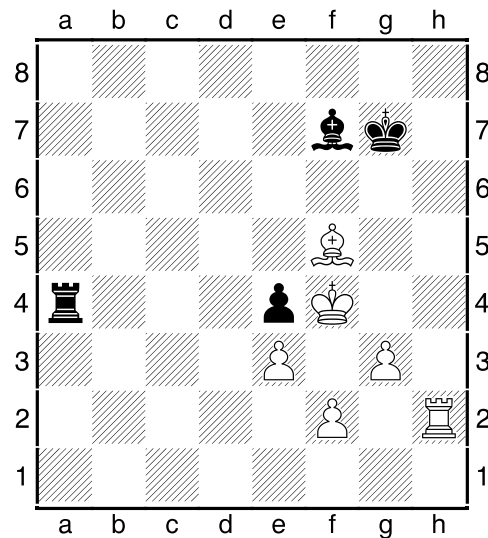
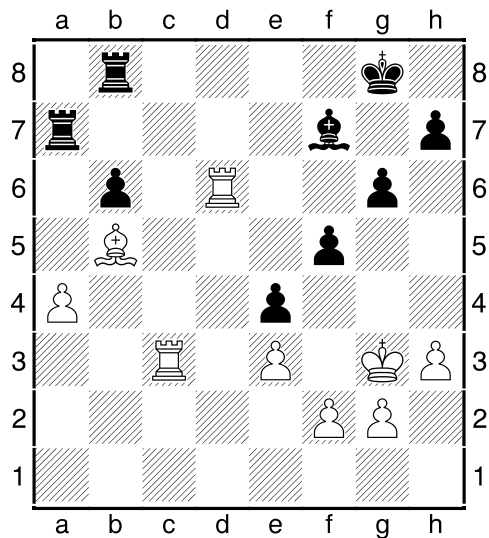


with draw] 36.Rf6 Bg6 37.h4 gxh4+
38.Kxh4 Kg7 39.Rcc6 Rd8 40.Rxb6



26...g6?! [Harder was 26...Rd8 although here white's advantage undeniable is due to pieces activity and the availability in the future to move king by the free way on kingside] 27.h3 Bf7 28.Rc7 Bd5 29.Rd1 Rf7 30.Rc3 Be6 31.Rd6 Re7 32.Rcc6?! [More precisely immediately 32.Kh2 Bf7 33.Kg3 Be8 34.Bxe8 Rxe8 35.Rcc6 Ra8 36.Rxb6 Rxa4 37.Rb7+~] 32...Bb3 33.Rc3 Bf7 34.Kh2 Ra7 35.Kg3

So, white captured a pawn and safe controls all the approaches to their base. Not behind the mountains of new material acquisition. 40...Rd2 41.Kg3 Ra2 42.Rfd6 Kh6 43.Rd7 Ra8 44.Rbd6 Rc8 45.Rd2 Ra1 46.Rd1 Ra2 47.R1d2 Ra1 48.Kf4 Rg1 49.g3 Ra1 50.Rd1 Rxd1 51.Rxd1 Rc2 52.Rf1 Ra2 53.Bd7 Bf7 54.Bxf5 Rxa4 55.Rh1+ Kg7 56.Rxh7+ Kf6 57.Rh6+ Kg7 58.Rh2



35...g5? [Black misses the only happy moment for the whole game: 35...Be8! 36.Bxe8 Rxe8 37.Rxb6 Rea8 38.Kf4 Rxa4 39.Rc7 R4a7 40.Rb8+ Rxb8 41.Rxa7 Rb2

Now it is the basic technique. 58...Bg6 59.Bxg6 Kxg6 60.g4 Rb4 61.g5 Rb5 62.Rh6+ Kg7 63.Rh2 Kg6 64.Kxe4 Kxg5 65.Rg2+ Kf6 66.f4 Rb3 67.Rd2 Rb6

68.Rh2 Rb4+ 69.Kf3 Rb3 70.Rh6+ Kf5
71.Rh5+ Kf6 72.Rc5 Ra3 73.Rd5 Rb3
74.Ke4 Rb4+ 75.Rd4 Rb6 76.f5 Rb5
77.Rd6+ Ke7 78.Re6+ Kf7 79.Kf4 Rb1
80.e4 Rf1+ 81.Ke5 Ra1 82.Rd6 Ra5+
83.Rd5 Ra7 84.f6 Kg6 85.Ke6 Ra8
86.Rd7 Ra6+ 87.Rd6 Ra8 88.Ke7 Ra7+
89.Ke6 Ra8 90.e5 Re8+ 91.Kd5 Kf5 92.f7
Rf8 93.Rf6+ Kg5 94.Ke4 1-0

Editorial staff:

IM Anton Sitnikov (ELO 2497)

IM Timofey Iljin (ELO 2507)

IM Anatoliy Polivanov (ELO 2356)

IM Tarlev Konstantin (ELO 2520)

IM Sergey Perun (ELO 2345)

Dmitry Posokhov (ELO 2294)

Chief editor Roman Viliavin (ELO 2248)

email: chesszone@ya.ru