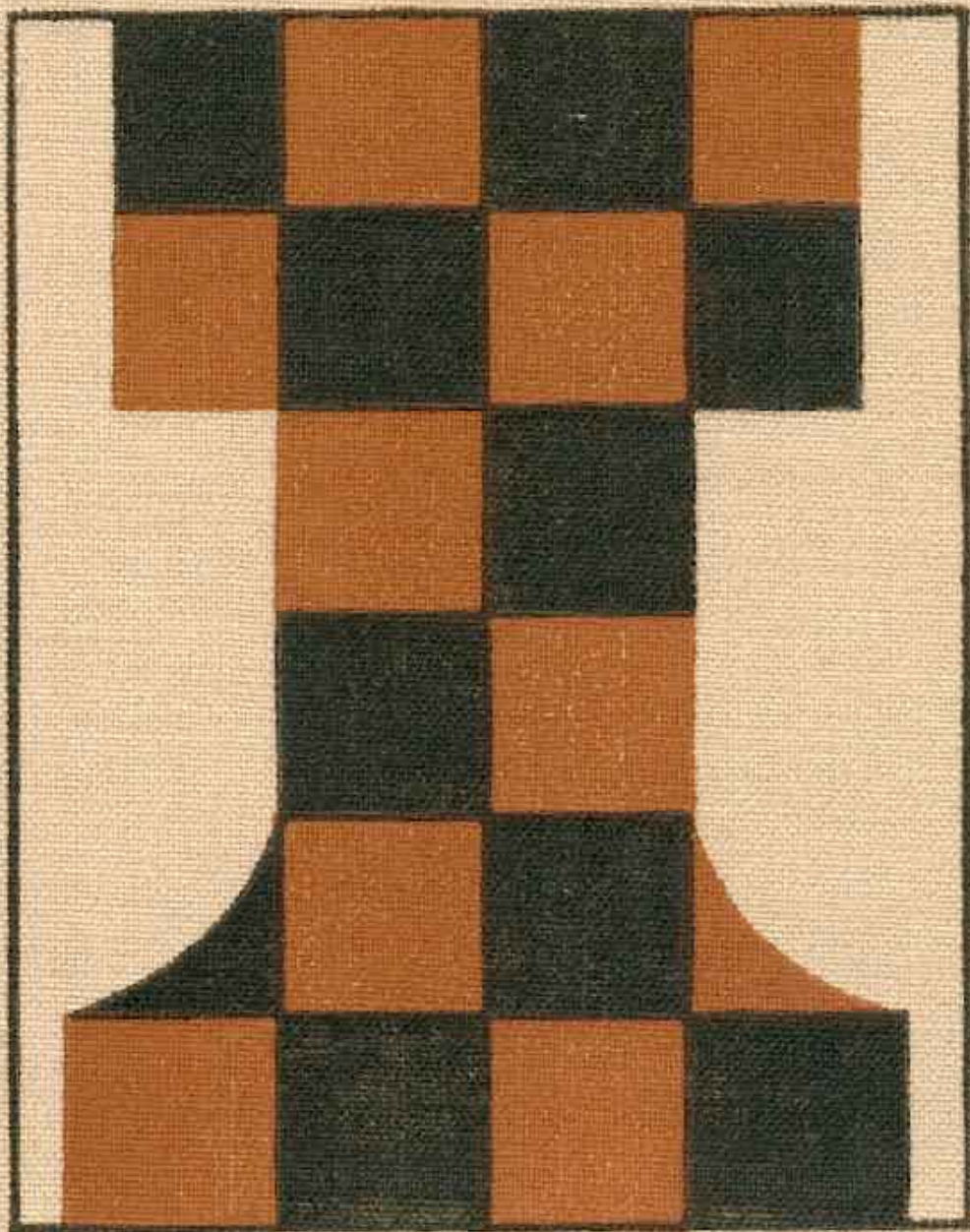


# ChessZone Magazine



## Table of contents: # 12, 2011

Games .....	4
(01) Gupta,Ab (2640) - Gleizerov,E (2566) [A84] .....	4
(02) Sethuraman,S (2543) - Lenderman,A (2581) [B19] .....	5
(03) Vallejo Pons,F (2705) - Ponomariov,R (2723) [C53].....	6
(04) Perez Candelario,Man (2558) - Delchev,A (2629) [B12].....	7
(05) Van Kampen,R (2558) - Socko,M (2479) [B76] .....	9
(06) Carlsen,M (2826) - Gelfand,B (2744) [D12] .....	10
(07) Khismatullin,Denis (2660) - Matlakov,Maxim (2632) [D94] .....	12
(08) Koneru,Humpy (2600) - Hou,Yifan (2578) [D38] .....	13
(09) Landa,K (2639) - Saric,Iv (2643) [E97] .....	15
(10) Spoelman,W (2563) - Macieja,B (2613) [E20] .....	16
Editorial staff: .....	18

**Dear readers!**

**ChessZone Magazine is open for your advertising materials.  
We have various ad packages at affordable rates!**

**We're also interested in cooperation with advertising agencies,  
and could offer great commissions for anyone  
who could bring an advertisers to us.**

**Please contact us for details**

**[chesszone@ya.ru](mailto:chesszone@ya.ru)**

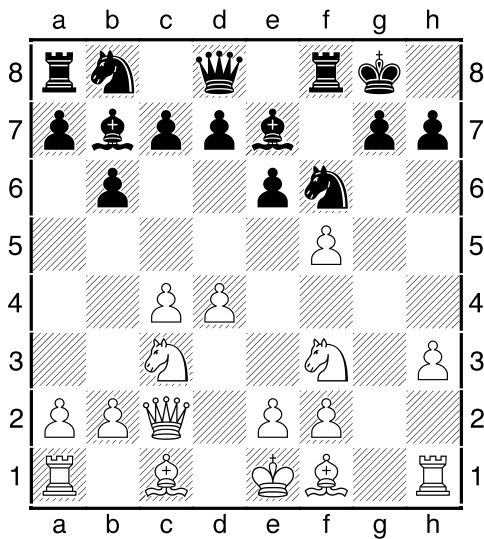
## Games

### (01) Gupta,Ab (2640) - Gleizerov,E (2566) [A84]

Vizag GM Open Visakhapatnam IND (6), 27.11.2011

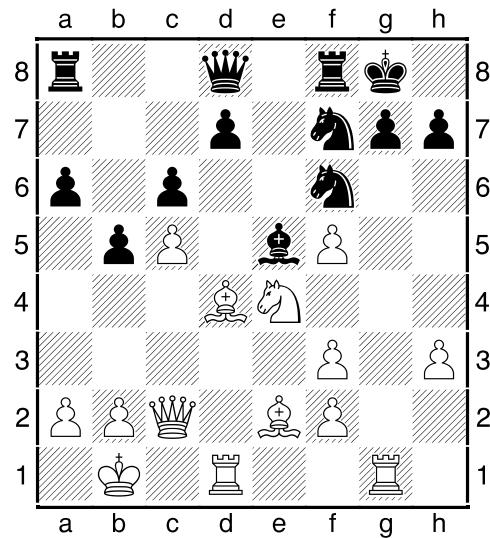
[IM Polivanov, A]

1.d4 e6 2.c4 f5 3.Nc3 Nf6 4.Qc2 Be7 5.Nf3 0-0 6.h3!? Very unusual treatment – White wants to use  $\Delta$ f5 by the dint of g2–g4. 6...b6 But that means – diagonal a8–h1 is gonna be open, so Black is preparing a fianchetto. [6...d5 7.Bf4  $\Delta$  e3, Bd3, g4] 7.g4 Bb7 8.gxf5

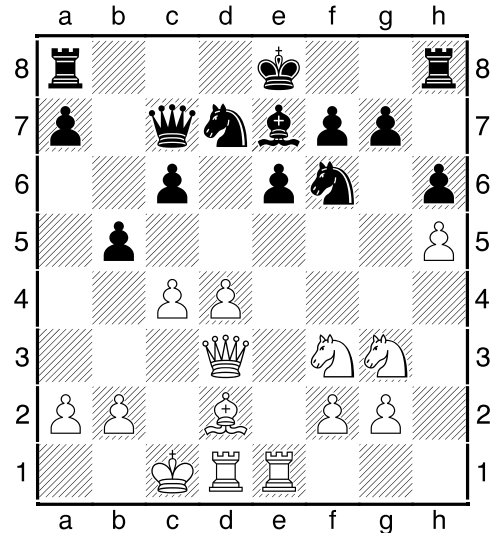
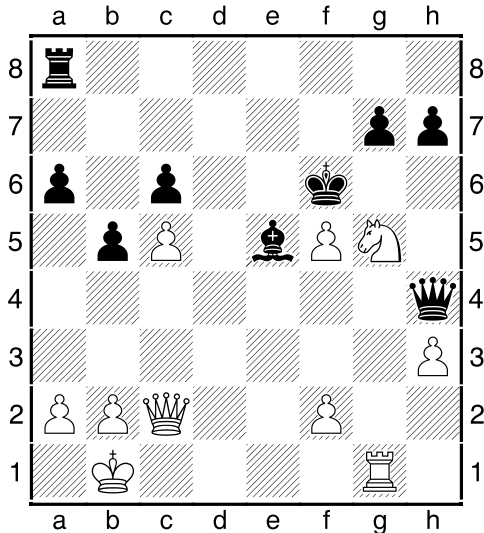


8...Bxf3N It's curious, that commenting own game with Milov (see next annotation), Gleizerov puts '?' mark to this move... [There was 8...exf5 9.d5 c6 10.Rg1 cxd5 11.Bh6 Ne8 12.0-0-0 (N $\Delta$ .Nxd5 Bxd5 13.cxd5 Bb4+ 14.Bd2) 12...Kh8 13.Bf4 dxc4 14.Ne5 d6 15.e3 Nd7i, Milov–Gleizerov, Geneve 2004, and Black is even hardly better; so why did he change his mind this time? Maybe, because of 9.Qxf5 Ne4 10.Qg4 Bb4 11.a3!?, but position is still unclear – 11...Nxc3 12.axb4 Qe7!] 9.exf3 Nc6 10.Be3 Gleizerov estimated this position as ' $\pm$ ', and he didn't tell lies! 10...e5 11.dxe5 Nxe5 12.Be2 [12.0-0-0 was recommended – 12...Nxf3? 13.Bg2 – but 12.Be2 will do too.] 12...c6 Black tries to create some counterplay after a6 and b5. 13.0-0-0 a6 14.Ne4 b5 15.c5! Sealing all queenside. Besides, square d6 is fixed

now too. 15...Nd5 16.Bd4 [16.f4 Nc4 17.Bxc4 bxc4 18.Qxc4 Rxf5 19.Nc3 looks quite convincing, but White is eager to put a pressure on  $\Delta$ g7 immediately.] 16...Bg5+ [ $\Delta$ f5 is untouchable: 16...Rxf5 17.Nd6 Rg5 18.h4 Rh5 19.f4+–] 17.Kb1 Bf4 Bishop is protecting  $\Delta$ e5 now, but point d6 is uncontrolled at the same time. White doesn't want to miss an opportunity. 18.Nd6! Nf7 Trying to eliminate  $\Delta$ d6, but exposing  $\Delta$ g7. The same story. 19.Rhg1 Nf6 20.Ne4 Be5



21.Be3! Brilliant. White steps back from d4 in order to return to this square after f3–f4. 21...Nd5 [21...Qe7 22.f4 Bxb2 23.f3! Nxe4 24.fxe4 Bf6 25.e5+–] 22.f4! Anyway. 22...Nxf4 [Loses in a forced away, but is there something else? I'm not sure: 22...Bf6 23.Rxd5! cxd5 24.Nxf6+ Qxf6 25.Qd3+–, with lethal Bd4.] 23.Bxf4 Bxf4 24.Rxd7 Qh4 [24...Qxd7 25.Nf6+] 25.Bh5! Maybe, this is not the only way to win, but the most showy one. Aiming to f7, White destroys the last defenders of black king. 25...Be5 [25...Qxh3 26.Nf6+ Kh8 27.Bxf7 gxf6 28.Qe4+–] 26.Bxf7+ Rxf7 27.Rxf7 Kxf7 28.Ng5+ Kf6



Now comes the finishing off. **29.Rg4!** [29.Qb3?! Qc4] **29...Qh5 30.f4! Bxf4 31.Qc3+ Be5 32.Ne4+ Kxf5 33.Ng3+ Bxg3 34.Qf3+ Bf4 [34...Ke6 35.Re4+] 35.Rxf4+** White played this game so bloody good, and I don't even know, where exactly Black has made a crucial mistake. **1-0**

**(02) Sethuraman,S (2543) - Lenderman,A (2581) [B19]**

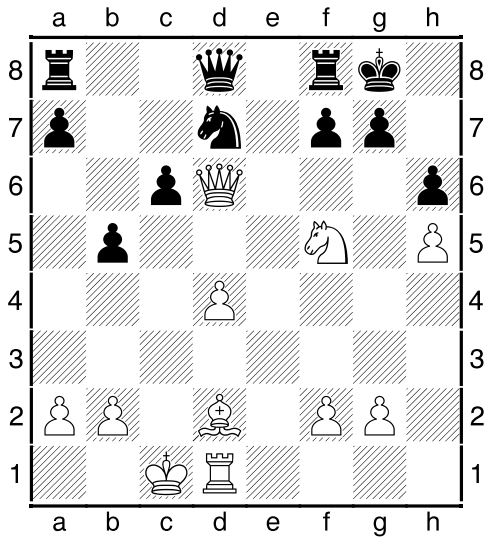
Cultural Village Tournament Wijk aan Zee NED (3.4), 23.11.2011

[IM Polivanov, A]

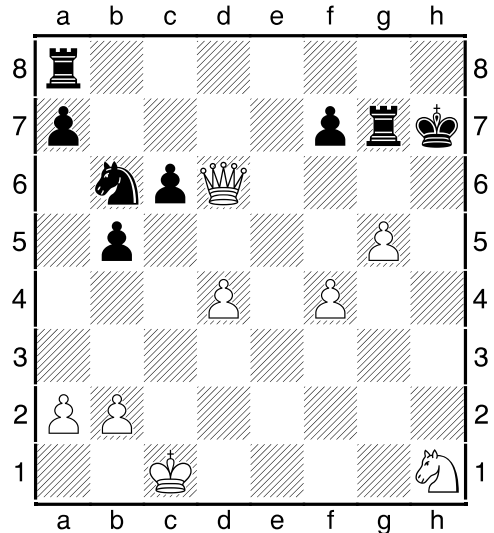
**1.e4 c6 2.d4 d5 3.Nc3 dxe4 4.Nxe4 Bf5 5.Ng3 Bg6 6.h4 h6 7.Nf3 Nd7 8.h5** Such clip can be handy in ending, and in mid-game too – I mean g4–g5 advancement. **8...Bh7 9.Bd3 Bxd3 10.Qxd3 e6 11.Bf4 Qa5+ 12.Bd2** [12.c3 Ngf6 , and White can't make any castle.] **12...Bb4!?** Interesting continuation, main idea of which – to provoke c4. **13.c3** [13.Ne4 Ngf6 14.Nd6+ seems to be dangerous, but it isn't: 14...Ke7 15.Nxb7 Bxd2+ 16.Nxd2 (16.Qxd2 Qb5) 16...Qb4 17.Qb3 Qxd4 18.0-0-0 Rhb8 , and Black is good.] **13...Be7 14.c4 Qc7** [14...Bb4?! now is another story: 15.Ne4 Ngf6 16.Nd6+ Ke7 17.c5! b6 18.0-0 bxc5 19.Ne5!+- , Acs-Gyimesi, Heviz 2003] **15.0-0 Ngf6 16.Rhe1** White wants to assault bishop e7 after Nf5. **16...b5!?**

**♗c4** was needed exactly for this reason – Black is securing square d5 for the knight. **17.c5** [17.cxb5 cxb5+ 18.Kb1 0-0 19.Nf5 (19.Qxb5 is too risky for a lousy pawn: 19...Rab8 20.Qd3 Qb6 21.b3 (21.Bc1 Rfc8) 21...a5→) 19...exf5 20.Rxe7 Qd6 21.Re2 Qd5 22.Nh4 Rae8! (only this rook, not f8 one) 23.Rde1 Re4 24.Nxf5 Qxf5 25.Rxe4 Nxe4 26.Qxe4 Qxf2=] **17...0-0** [17...Nd5 is playable too: 18.Kb1 a5 19.Ne4 a4 20.g4 a3 21.b3 Rd8! (21...0-0 22.g5+-) 22.Ne5 Nxe5 23.dxe5 Qxe5 24.Nd6+ Bxd6 25.Rxe5 Bxe5≡ , Nurkic-Szuhanek, Vukovar 2010] **18.Nf5** [As it was planned, though "calm" 18.Kb1 Rfd8 19.Qc2 Nf8 20.Ne2! , Haba-Gyimesi, Germany 2008, intending g4–g5, probably, should be preferred.] **18...exf5 19.Rxe7 Nxc5** Maybe, White has just overlooked this blow? Nope, all is not so simple. **20.Qe2** [Of course, 20.Rxc7 Nxd3+ 21.Kb1 Nxf2 is hopeless.] **20...Ncd7** [20...Nd3+ 21.Kc2!] **21.Nh4** This is what White is hoping for – knight will be at perfect spot f5. But everything has its price... **21...Nd5N** ... and ♖e7 is done. [21...Qd6 occurred before: 22.Nxf5 Qd5 , and now simple 23.Qf3 is enough for an advantage (instead of 23.g4 Qxa2, Leko-Karpov, Miskolc 2006) – 23...Qxf3 24.gxf3 Rae8 (24...Rfe8 25.Rxd7 Nxd7 26.Rg1→) 25.Rxe8 Rxe8 26.Rg1 Nxh5 27.Nxh6+ Kf8 28.Bb4+! c5 29.dxc5 a5 30.Bxa5±] **22.Nxf5 Nxe7 23.Qxe7** [23.Nxe7+ Kh8 24.Nf5 Nf6-+] **23...Qd8?!** [Queen has to be driven out by

another path: 23...Rae8! 24.Qh4 , and now 24...Kh8! 25.Qg4 Rg8 26.Bf4 Qd8 27.Nd6 Ref8 – White without exchange and objects to attack.] **24.Qd6**



Now Black ought to think something up against deadly Qg3. **24...Kh7?** [24...Qf6! would be a salutary sacrifice: 25.Ne7+ Kh8 26.Qxd7 Rad8 27.Qxa7 Rxd4 , and Black will easy achieve a draw – 28.Bc3 Rxd1+ 29.Kxd1 Qd6+ 30.Kc2 Rd8 31.b4 Qd1+ 32.Kb2 Rd2+=] **25.Bxh6!** Once and for all exposing black king. **25...Rg8** That's loses, but it's difficult to suggest something really better. [25...Qf6 26.Qxf6 (26.Qxd7? Rad8) 26...Nxf6 27.Bxg7+-; 25...Nf6 26.Qf4 Nd5 27.Qg4+-] **26.Bxg7 Qg5+ 27.f4 Qxh5 28.g4!** [28.Qxd7 is still fails due to 28...Rad8 ; now ♖f5 is protected.] **28...Qh2 29.Ng3!?** [Very inventive, but there is nothing wrong with simple 29.Qxd7 Qxf4+ 30.Kb1 Qe4+ 31.Ka1 Rxc7 , and now 32.Qd6! , transferring to the "h"-line: 32...Rxc7 (32...Rg6 33.Qh2+) 33.Qh6+ Kg8 34.Rh1 f6 35.Nd6+-] **29...Rxc7 [29...Kxc7 30.Nh5+ Kh7 31.Qxd7+-] 30.Rh1 Qxh1+ 31.Nxh1 Nb6 32.g5**



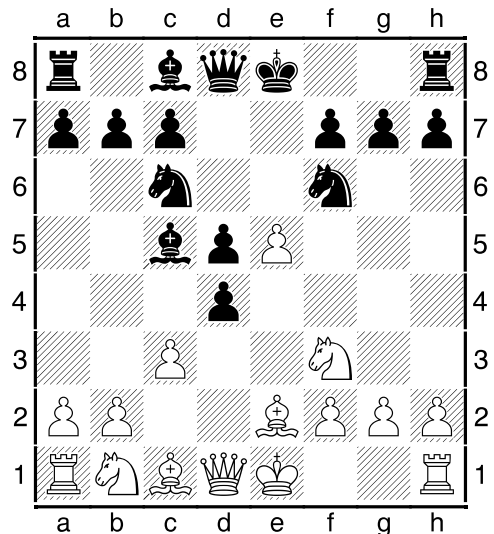
Of course, an attacking pair Q + N should be enough for the victory. **32...Re8 33.Ng3 Re1+ 34.Kc2 Rg1 35.Nh5** [35.Qh6+ Kg8 36.Nf5 wins in a moment, but nothing is ruined yet.] **35...Rg2+ 36.Kd3 Rd2+ 37.Kc3 b4+ 38.Kxb4 Rg6 39.Nf6+ Rxf6 40.gxf6 Kg6 41.f5+!** Final touch. **41...Kh5 [41...Kxf5 42.Qe5+ Kg6 43.Qe4+ Kxf6 44.Qf4+] 42.Qxc6 Rxd4+ 43.Kb5 1-0**

**(03) Vallejo Pons,F (2705) - Ponomarev,R (2723) [C53]**

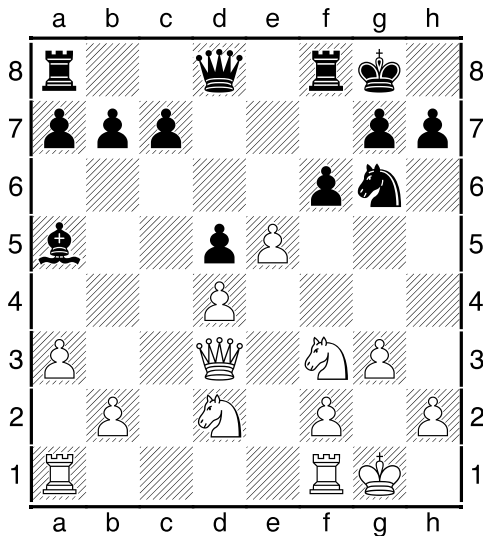
TCh-ESP CECLUB Div Honor 2011 Melilla ESP (3), 23.11.2011

[IM Polivanov, A]

**1.e4 e5 2.Nf3 Nc6 3.Bc4 Bc5 4.c3 Nf6 5.d4 exd4 6.e5 d5 7.Be2??!**

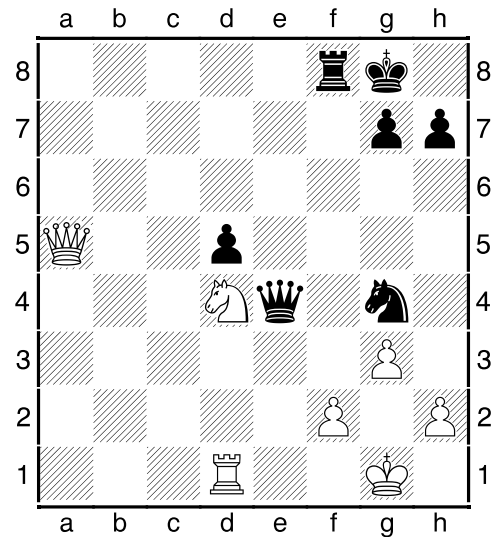


[A toothless continuation. Usually White chooses 7.Bb5 Ne4 8.cxd4 Bb4+ 9.Bd2 Nxd2 10.Bxc6+ (an important intermediate) 10...bxc6 11.Nbxd2 0-0 12.Rc1!? (12.0-0 c5) 12...Bg4 (12...c5 13.dxc5 Qe7 14.0-0 Bxc5 15.Nb3) 13.0-0 Bxd2 14.Qxd2 Bxf3 15.gxf3 Qd7 16.Rc3 with some pressure through "c"-line.] **7...Ne4 8.cxd4 Bb4+ 9.Bd2 Nxd2 10.Nbxd2 0-0 11.0-0 f6!** Black is undermining the center in order to get some perspectives for bishop b4. **12.a3 Ba5N 13.Bb5** Bishop has gone to b5 anyway, proving, that 7.Be2 was a waste of time. **13...Ne7** [13...Nxd4!? was interesting with just marvellous compensation by way of pawn center and two bishops: 14.Nxd4 fxe5 15.N4b3 Bb6 ; but there is no need for such drastic measures.] **14.Qc2** White is threatening with Bd3, so the answer if forced. **14...Bf5 15.Bd3 Bxd3 16.Qxd3 Ng6!** Besides  $\text{e5}$ ,  $\text{g6}$  is looking at f4-direction. So White decides to prevent it. **17.g3**



**17...c5!** Excellent central counterstrike – now Black is catching an initiative entirely. **18.b4!** Vallejo finds a good objection. [Of course, 18.exf6 c4! 19.Nxc4 (19.Qc2 Qxf6  $\Delta$  Bxd2) 19...dxc4 20.Qxc4+ Kh8 21.fxg7+ Kxg7 can't be satisfactory for Black.] **18...cxb4 19.Nb3 bxa3** [19...Bc7 20.axb4 fxe5 21.dxe5 , and  $\text{d5}$  is too weak.] **20.Nxa5 Qxa5 21.Qb3**  $\text{a3}$  is done anyway, so it's useful to take two more objects to aim. **21...fxe5 22.Rxa3 Qd8 23.dxe5?**

**23.Nxe5!** , and White is very close to equalization, for example: 23...Nxe5 (23...b6 24.Rfa1 a5 25.Nc6) 24.dxe5 Qd7 25.Rd1 Rfd8 26.Ra5=] **23...Qd7** Now Black is able to protect all his pawns. **24.e6?!** [24.Rd1 Ne7+ ; but anyway, 24.e6 seems too desperate.] **24...Qxe6 25.Qxb7 a5 26.Nd4 Qe4 27.Rd1** Re3 is threatening, but it's Black's turn to move. **27...Rab8!** Rook goes to b1, and  $\text{d4}$  is somewhat hanging. **28.Qa6 Rb1 29.Rad3** [29.Rxb1 Qxb1+ 30.Kg2 Qb2] **29...Rxd1+** [Attractive 29...Nh4? would have been a mistake: 30.Qe6+ (30.gxh4? Qg4+) 30...Qxe6 31.Nxe6 Rxd1+ 32.Rxd1 Rf6 33.Nc5 Nf3+ 34.Kg2 d4 35.Ra1=; 29...Ne5!? is mush stronger, as 30.Rxb1 Nxd3 31.Qe6+ Qxe6 32.Nxe6 Rf6 should be enough for the victory; Ponomariov wants something similar, but changes rooks at first.] **30.Rxd1 Ne5 31.Qxa5 Ng4**



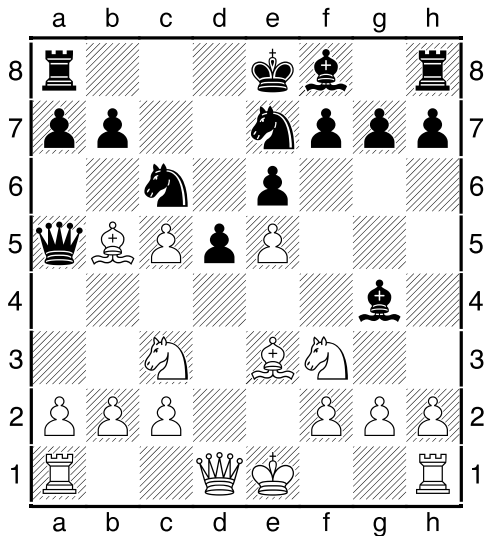
**32.Nc6?** [Suicide-resembling decision; only 32.Qe1  $\square$  Qxe1+ 33.Rxe1 Rxf2 34.Re7 works here: (34.h3 Rd2 35.Nf3 Rd3) 34...Rxb2? 35.Ne6 g6 36.Rg7+ Kh8 37.Rd7 ; chances for the draw are quite small though.] **32...Ne3!** Such multipurpose move ends the game at once. **33.fxe3 Qxe3+ 34.Kg2 Rf2+ 35.Kh3 Qh6+ 36.Kg4 Qg6+ 0-1**

**(04) Perez Candelario,Man (2558) - Delchev,A (2629) [B12]**  
TCh-ESP CECLUB Div Honor 2011 Melilla

ESP (2), 22.11.2011

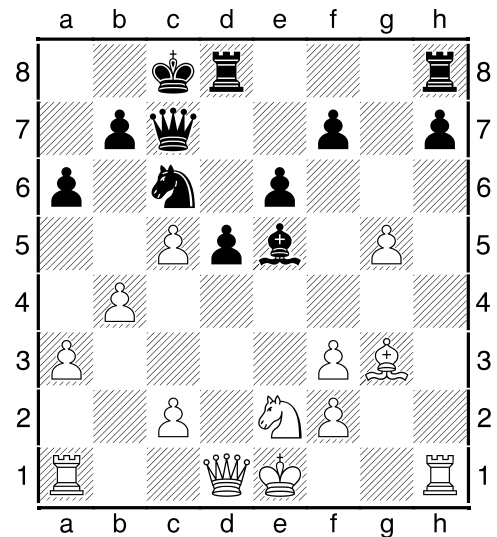
[IM Polivanov, A]

**1.e4 c6 2.d4 d5 3.e5 c5 4.dxc5 Nc6 5.Nf3**  
 Now Black is able to handle own "french" bishop c8. [5.Bb5 is more common choice, and after 5...e6 6.Be3 Nge7 7.c3 Bd7 8.Bxc6 Nxc6 9.f4 (9.Nf3 Qc7 10.Bd4 Nxd4 11.cxd4 b6 12.cxb6 Qxb6) 9...g5! a complicated play emerges.] **5...Bg4 6.Bb5 Qa5+!** [6...e6 would be an inaccuracy: 7.b4! Δ Nbd2, Bb2. Now White is deprived of such possibility.] **7.Nc3 e6 8.Be3 Nge7**



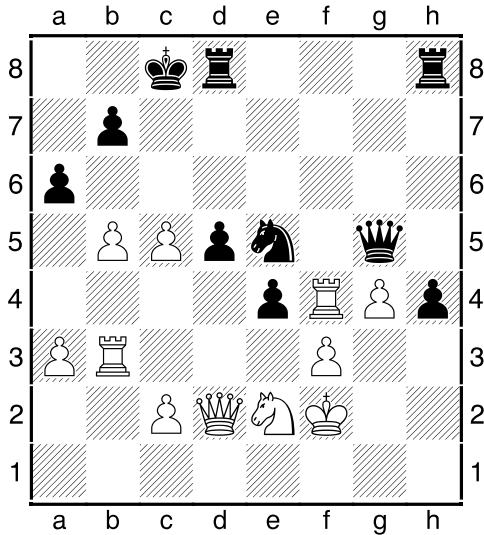
**9.a3** [9.h3 was almost refuted in recent game Carlsson–Fridman, Gibraltar 2010: 9...Bxf3 10.Qxf3 a6 11.Ba4 0-0-0! 12.Qxf7 d4 13.Qxe6+ Kb8 14.0-0-0 dxe3 15.Rxd8+ , and now 15...Nxd8 16.Qd6+ Ka7 guarantees an edge.] **9...0-0-0 10.b4 Bxf3!** [An important intermediate: 10...Qc7 11.Bxc6 Nxc6 12.Nb5 (12.Bf4!?) 12...Bxf3 13.Qxf3 Qxe5 14.c3 , and White is better.] **11.gxf3** [11.Qxf3 Nxb4] **11...Qc7 12.Bxc6 Nxc6 13.Bf4** [13.Bd4 a6 14.f4 g5! 15.fxg5 h6f , with reversed Wolga–style.] **13...a6** [13...g5 is suggested itself, but there is 14.Nb5 – so, 13...a6 first.] **14.Bg3** [White tried to deal with g5 by means of 14.Qe2 , but 14...f6 then: 15.Na4 fxe5 16.Bg3 g6 17.c3 Bg7 18.Rb1 d4 19.b5 axb5 20.Rxb5 dxc3 21.Nb6+ Kb8 22.Kf1 Qf7 23.Kg2 , Nijboer–Bitalzadeh, NED–ch 2009, and now Black has chosen to draw the game (23...Rd2 24.Qe4 Rd4) instead of winning it after 23...Nd4 24.Bxe5+ Bxe5 25.Qxe5+

Qc7+] **14...g5** Anyway! **15.h4 Bg7!N**  
 [Perhaps, this is an improvement in comparison to 15...gxh4 16.Rxh4 Nxe5 17.Qe2 Bg7 18.Rh5 f5 19.Na4 f4 20.Bxf4 Nd3+ 21.Qxd3 Qxf4 22.Rb1 Qd4 , and after 23.Qxd4 (23.c6 b5! 24.Nc5 Rd6= , Kravt–siv–Braun, Universiade 2011) 23...Bxd4 24.Ke2 Δ Rbh1 White gets an upper hand.] **16.hxg5 Bxe5 17.Ne2**□

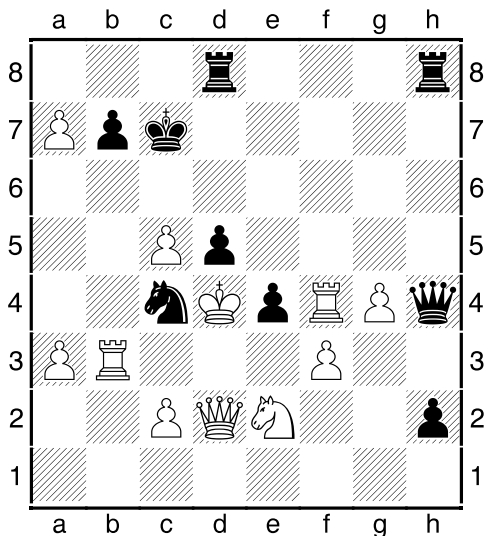


**17...f6!** Black finds an appropriate way to unleash the game. **18.gxf6 Qf7** ♖f3 is gonna be a target... **19.Rb1** .. but White is going to protect it from b3 square. b4–b5 break is also considered. **19...Bxg3 20.fxg3 Qxf6 21.Rb3 e5** Black has a clear–cut central strategy: e4, Ne5, maybe d4. **22.Qd2** [White decided to withdraw from the castle, maybe because of the following line: 22.0-0 h5 23.a4 Qg7 24.Qd2 (24.b5 Nd4) 24...h4 25.g4 e4 26.g5 exf3 27.Rbxf3 Rh5 , and king g1 is disturbed.] **22...h5!** It's still an useful move – defending from Rh6. **23.Rh4 e4! 24.Kf2?!** [24.f4 d4f; 24.Qf4 Qa1+ 25.Qc1 (25.Kf2 Rhf8) 25...Qxc1+ 26.Nxc1 Nd4; finally, 24.Rf4 meets 24...Qe6 , intending Qh3 – but that was lesser of all evils.] **24...Ne5 25.Rf4 Qg5 26.b5** Realizing, that delay is like death, White goes to the desperate attack. **26...h4!** [No time for 26...Nxf3? – 27.Qa5] **27.g4**□





**27...h3?** [Black forgets about self-defence. 27...Nc4! was the right choice – 28.Qd4 (28.Qb4 a5!, that's the first idea), and only now 28...h3 with such spectacular variation: 29.bxa6 e3+! (the second idea) 30.Rxe3 h2 31.a7 Qh4+ 32.Ng3 h1N+!! 33.Ke1 Qxg3+ 34.Kd1 Qg1+, winning.] **28.bxa6 h2** [28...bxa6 29.Qb4+-] **29.a7** Now what? **29...Qh4+** [29...e3+ isn't working anymore: 30.Qxe3 Qh4+ 31.Ng3 h1N+ 32.Ke1 Qxg3+ 33.Kd1+-] **30.Ke3?** [30.Ng3 h1N+ 31.Ke3! (31.Ke1 Qxg3+ 32.Kf1 Qh3+=) 31...Nc4+ 32.Kd4+-, and white king is invulnerable.] **30...Nc4+ 31.Kd4 Kc7?**



[Seems natural, but only 31...Kd7! is correct here – 32.Qb4 (32.Rxb7+ Ke8)

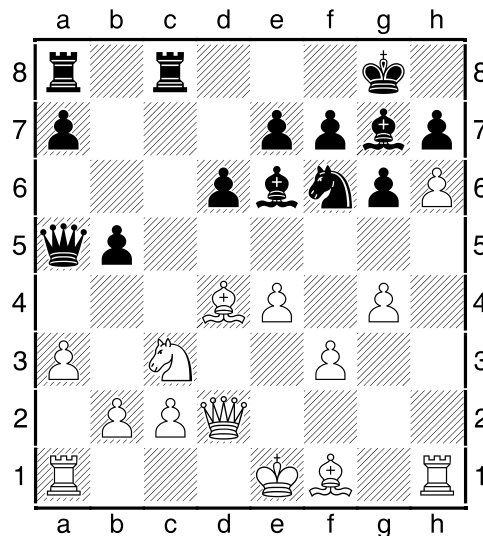
32...Qf2+ 33.Kxd5 Kc7+ 34.Kxc4 Qxe2+ 35.Rd3 Qxc2+ 36.Rc3 Qe2+ 37.Kb3 Qd1+ 38.Rc2 Qb1+ 39.Rb2 Qd3+, and Black will exchange the queens: 40.Ka2 (40.Ka4 Qa6+) 40...Qd5+ 41.Rb3 Qd2+] **32.Rxb7+?** [Suicide sacrifice, whereas 32.Rf7+ Kc6 33.Kc3!!+-, and Black is defenceless: 33...h1Q (33...Kxc5 34.a8Q! Rxa8 35.Rb5+! Kxb5 36.Qxd5+ with mate) 34.Nd4+ Kxc5 35.Rc7+ Kd6 36.Qf4+ Ne5 37.Nb5+ Ke6 38.Qf5#] **32...Kxb7 33.Qb4+ Ka8** A fascinating slugfest! **0-1**

**(05) Van Kampen,R (2558) - Socko,M (2479) [B76]**

Max Euwe Mem Gp2 Amsterdam NED (4), 18.11.2011

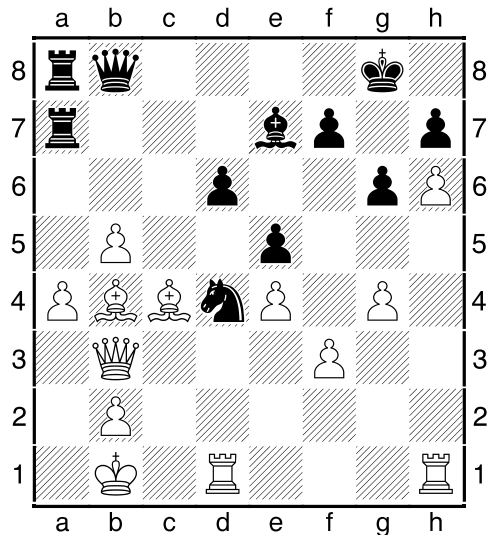
[IM Polivanov, A]

**1.e4 c5 2.Nf3 d6 3.d4 cxd4 4.Nxd4 Nf6 5.Nc3 g6 6.Be3 Bg7 7.f3 0-0 8.Qd2 Nc6 9.g4** This move is designed not only for h2-h4-h5 attack, but against d6-d5 too. **9...Nxd4** [9...d5? 10.g5; that's why Black has switched to another plan.] **10.Bxd4 Be6 11.h4 Qa5 12.h5 Rfc8 13.a3** Further action is unthinkable without a long castle. **13...b5** [Black wants to take an initiative immediately. This move could be made after preliminary 13...Rab8 14.hxg6 fxe6 15.0-0-0 – 15...b5, but 16.g5! Nh5 17.Bxg7 Nxe7 18.Bh3±, and White is better.] **14.h6!**



**14...Bf8?!N** [Black doesn't want a hard ending in case of 14...Bh8 15.Nxb5 Qxd2+

16.Kxd2 a6 17.g5 (17.Nc3? Nxe4+) 17...Nxe4+ (thanks to 14.h6 there is no Nxe4; 17...axb5 18.gxf6 Bd7 19.Rd1±) 18.fxe4 axb5 19.Bxb8 Kxb8 20.Bxb5 Rc5 21.a4 Rxb5 22.b4±, and white passers are going faster. But it's still was the best choice.] **15.Nxb5 Qd8** Black stakes one's all, giving ♖a7 away. White king still hasn't castled though. **16.Nxa7 Rc7 17.Nb5** [17.Bb6? Rxa7] **17...Rb7 18.Be2 Bd7 19.c4** Now ♖b2 is protected, so ♘b5 can come back. **19...e5** [19...d5 20.e5 dxc4 21.Nc3 Bc6 (21...Ne8 22.Bxc4+-) 22.exf6 Rd7 23.fxe7 (23.0-0-0 e5) 23...Bxe7 24.0-0-0 Bxf3 25.Qe1!+-] **20.Bc3 Ne8 21.0-0-0** [21.0-0?! Qh4] **21...Be7 22.Qc2** Of course, White doesn't want to lose a queen. **22...Qb8 23.Bb4** Now square d4 is controlled less than before, so ♘e8 is looking forward to get there. **23...Bxb5 24.cxb5 Nc7** [24...Rc7 25.Bc3 (25.Bc4? d5) ] **25.a4 Ne6 26.Kb1 Rc7** [26...Rba7 27.b3 – that's why Black invited queen to b3 at first; 26...Nd4 seems to be principal, but after 27.Rxd4 exd4 28.a5 things turn bad for Black: 28...Rxb5 29.Bxb5 Qxb5 30.Qd2 d3 31.Qc3 Bf8 32.Bxd6+-] **27.Qb3 Rca7 28.Bc4** [28.a5!?] **28...Nd4?!**



Now it's even worse version of 26...Nd4. [28...d5!? was a worth chance: 29.Bxd5 Bxb4 30.Bxa8 Qxa8 31.Qxb4 Rxa4, although after correct 32.Qd6! Nd4 33.Rxd4 exd4 34.Rc1! White should won.] **29.Bxf7+ Kh8 30.Rxd4!** [30.Qd5?! meets 30...Rxa4

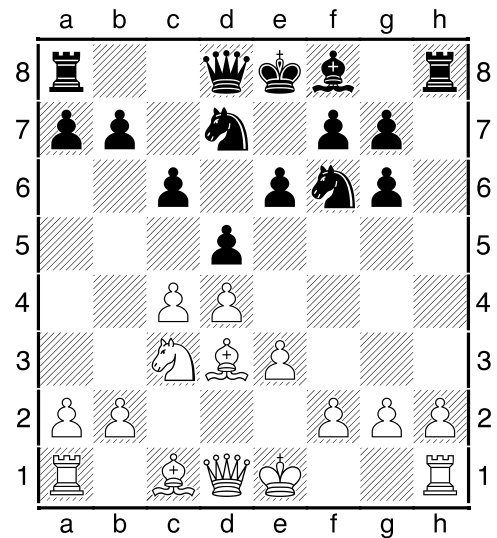
31.Rxd4 Ra1+ 32.Kc2 Rxh1] **30...exd4 31.Qe6** Now Black is almost paralyzed. **31...Qd8 32.a5 Rd7 33.Qd5 Bf6 34.Be6 Re7 35.g5 Be5 36.Bxd6!** Queen d5 shoots at a8 and d4, that's why this blow finishes the deal. **36...Qxd6** [36...Bxd6 37.Qxd4+] **37.Qxa8+ Qb8 38.Qxb8+ Bxb8 39.Bd5 Bf4 40.b6 d3 41.a6 1-0**

**(06) Carlsen, M (2826) - Gelfand, B (2744) [D12]**

6th Tal Memorial Moscow RUS (2), 17.11.2011

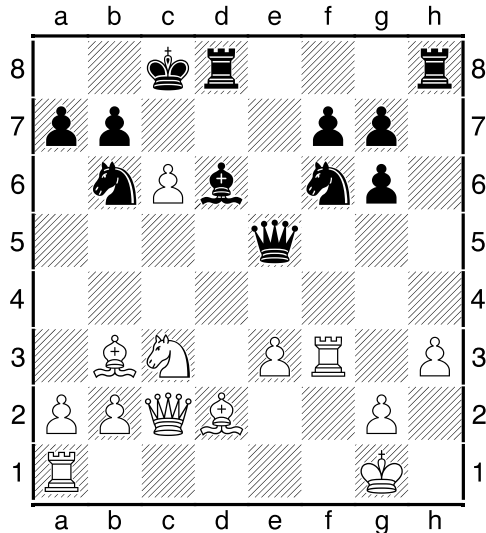
[IM Polivanov, A]

**1.d4 d5 2.c4 c6 3.Nf3 Nf6 4.e3 Bf5 5.Nc3 e6 6.Nh4 Bg6** [Gelfand decided to manage without preliminary 6...Be4 7.f3 Bg6] **7.Nxg6 hxg6 8.Bd3** [8.g3 is played usually – to cover ♖h2 from Bd6 with further fianchetto. But Carlsen goes another way.] **8...Nbd7**



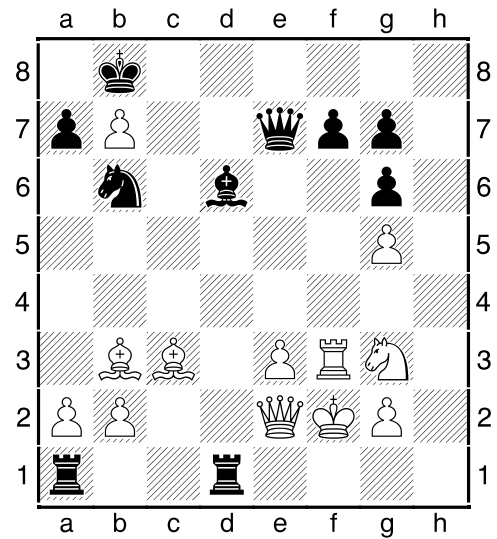
**9.0-0** [Despite open line "h", White has chosen a short castle. The long one would be a more positional path: 9.Qe2 Bd6 10.Bd2 Qe7 11.c5 Bc7 12.f4 Nh5 13.0-0-0 f5 14.b4, Korchnoi–Pelletier, Biel 2003] **9...Bd6 10.h3** [Now 10.g3 is dubious in view of 0-0-0, Rh3, Rdh8 with problems.] **10...dxc4N** [10...g5?! , intending g5–g4, fails after 11.cxd5! cxd5 (11...exd5 12.e4 – "e"-file is opening) 12.e4 dxe4 13.Nxe4 Nxe4 14.Bxe4±] **11.Bxc4 Nb6** [Immediate 11...e5? meets 12.Qb3] **12.Bb3 e5 13.Qc2 Qe7** [13...0-0? 14.Qxg6; that's why Black

has nothing else but queenside castle, though it's quite dangerous.] **14.Bd2** [I like 14.a4! more: 14...a5 (14...0-0-0? 15.a5 Nbd7 16.a6+-) , and then 15.Bd2 wins in power.] **14...0-0-0 15.d5** That is White counting on, but Black has a reasonable objection. **15...e4!** Battery Q + B forebodes a lot of trouble. [15...c5? 16.e4±] **16.dxc6 Qe5** [Of course, not 16...bxc6 17.Nb5±] **17.f4 exf3 18.Rxf3**

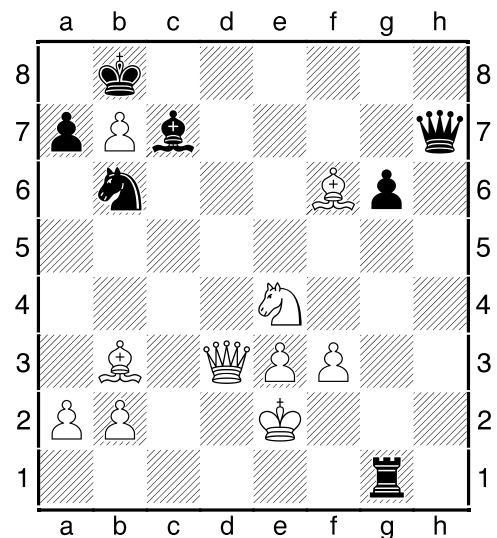


**18...Ng4!!** [Such move is easy to be missed; 18...Qh2+ 19.Kf2 gives Black nothing, but with ♞g4 it's another story.] **19.cxb7+ Kb8** [19...Kxb7 20.Qe4+] **20.hxg4** There is no other way to deal with threat Qh2, Qh1, Qxg2. **20...Rh1+! 21.Kf2 Rxa1 22.Ne2!** Excellent. Knight is heading to c6 (if there will be such opportunity), and covering a very important square g3. **22...Bc5** [22...Kxb7 23.Rxf7+ Rd7 24.Qxg6±] **23.Bc3?!** Too optimistical. [First of all, White wants to avoid 23.Rxf7?! Rxd2! 24.Qxd2 Bxe3+ 25.Qxe3 Rf1+ 26.Kxf1 Qxe3; but 23.Nd4! was a correct path to make it: 23...Bxd4? (~~23...Rxd4!~~), and after 24.exd4 Bxd4+ 25.Be3 all comes to the draw - 25...Bxe3+ 26.Rxe3 Qf4+ 27.Rf3 Qd4+=) 24.exd4 Qxd4+ 25.Be3 Qb4 26.Rxf7, and Black in huge trouble - 26...Qe1+ 27.Kf3 Qf1+ 28.Ke4 Re8+ 29.Kd4 Rd8+ 30.Kc5!+- - king escaped!] **23...Qe7!** Intention is obvious - check at h4. **24.g5 Rdd1!** [Gelfand conducts an attack, paying no attention to 24...Qxg5

**25.Qe4] 25.Ng3 Bd6! 26.Qe2**



**26...Rg1?** [It's difficult to explain, why Black rejected 26...Bxg3+ 27.Rxg3 (27.Kxg3 Qxg5+ 28.Kf2 Qh4+-) 27...Rf1+ 28.Qxf1 Rxf1+ 29.Kxf1 Nd7! (moving to e5), and White is the side who risks to lose (though, draw will be achieved anyway).] **27.Qd3!** Immediate response - planning Ne4 and making a room for the king f2. **27...Bc7** [27...Bxg3+ 28.Rxg3 Rgf1+ 29.Ke2] **28.Ne4 Raf1+?!** [28...Kxb7 was better, and now we'll see why.] **29.Ke2 Rxf3 30.gxf3 f5** A desperate attempt to get the white king. [30...Kxb7 31.a4! - and under ♜a1 this move was not so strong.] **31.gxf6 gxf6 32.Bxf6 Qh7**



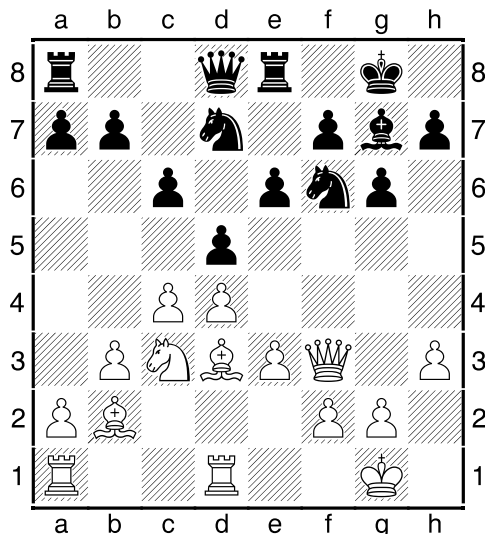
**33.Qb5!** The most exact reply – king e2 is free to go at d3, whereas queen is going to check from e8, and so on. **33...Rg2+** [33...Qh2+ 34.Kd3 – no checks; 33...a6!? was some hope, but in case of 34.Qe8+! (34.Qxa6 Qh1→) 34...Kxb7 35.Nc5+ Ka7 36.Qc6+– White is gonna win this game.] **34.Kd3 Qd7+ 35.Qxd7 Nxd7 36.Bd5** Of course, ♖b7 should remain. **36...Be5 37.f4!** An elegant ending. **37...Bc7** [37...Bxf6 38.Nxf6 Nc5+ 39.Kd4 Rc2 40.b4 Nxb7 41.e4+–] **38.Bc6 1-0**

**(07) Khismatullin, Denis (2660) - Matlakov, Maxim (2632) [D94]**

Russian Cup Final KO Magnitogorsk RUS (3.1), 17.11.2011

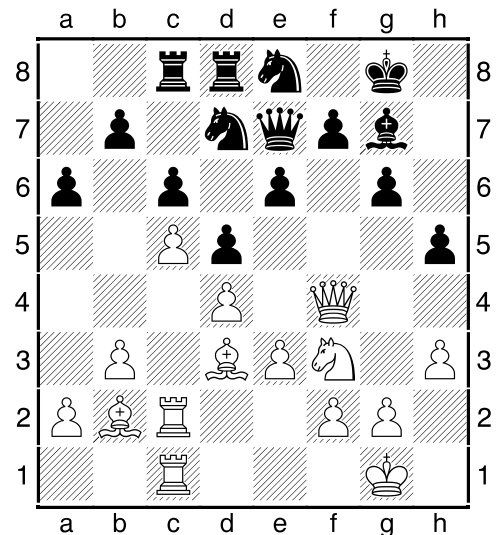
[IM Polivanov, A]

**1.d4 d5 2.c4 c6 3.Nc3 Nf6 4.e3 g6** One moment ago this was a Slav Defence, but now – it's Grunfeld. **5.Nf3 Bg7 6.Bd3 0-0 7.0-0 Bg4** Black's main idea – to exchange at f3 with further e5 advancement, to make bishop g7 more active. **8.h3 Bxf3 9.Qxf3 e6** [Postponing e5 to the most suitable moment, though it could be carried out right away: 9...dxc4 10.Bxc4 Nbd7 11.Rd1 e5 12.d5 e4! 13.Nxe4 Nxe4 14.Qxe4 Nb6 15.Bb3 (15.d6 Qf6) 15...cxd5 16.Bxd5 Nxd5 17.Rxd5 Qb6 with excellent compensation owing to the powerful bishop g7.] **10.Rd1 Nbd7 11.b3 Re8 12.Bb2**



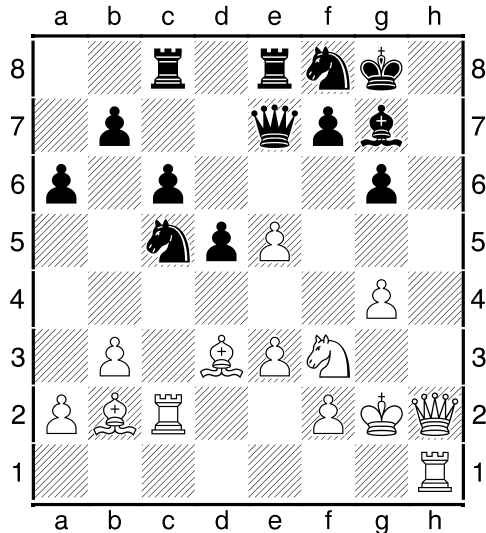
[Maybe, 12.Bf1 is a little bit more accurate.] **12...Qe7** [It seems, that 12...e5 13.cxd5

14.dxe5 Nxe5 15.Qf4 leads to the comfortable edge, Van Wely–Beckhuis, Bundesliga 2006, but 15...Nxd3 16.Rxd3 Ne4! drastically changes the situation: 17.Rxd5 Nxc3 18.Rxd8 Ne2+ 19.Kf1 Nxf4 20.Rxa8 Rxa8 21.Bxg7 Kxg7 22.exf4 Rc8 , and it will be a draw in 95% cases.] **13.Bf1** Leaving from e5–e4 threat. **13...a6** [Switching to the positional rails, because now 13...e5 is pointless – 14.cxd5 e4□ 15.Qg3 Nxd5 (15...cxd5 16.Nb5) 16.Nxd5 cxd5 17.Qc7!±] **14.Rac1 h5 15.Rc2 Red8N** [Earlier met 15...b5 16.Rdc1 Nb6 17.cxd5 cxd5 18.Bd3 Nfd7 19.Qe2 (19.Ne2!?) 19...e5 20.dxe5 Bxe5 21.Qd2 Nf6 22.a4 b4 23.Ne2 Bxb2 24.Rxb2 Ne4 25.Bxe4 dxe4 26.Qd4 , Cheremnova–Stojanovic, WUCC op 2010, and Black is suffering.] **16.Qf4 Ne8 17.Qf3 Ndf6?!** [N7...Nef6 ; Black thought, that knight will have more perspectives at d6 and f5, but he is wrong.] **18.Bd3 Rac8 19.Nb1!?** That maneuver is known since the game Korchnoi–Petrosian from their match in 1980. Now Black has to reckon with Ba3, meantime ♖b1 is heading to f3. **19...Nd6 20.Nd2 Nf5 21.Rdc1** Now in view of cxd5 threat ♖f5 should step back. **21...Nd6 22.Qf4 Nde8 23.Nf3 Nd7 24.c5!±**

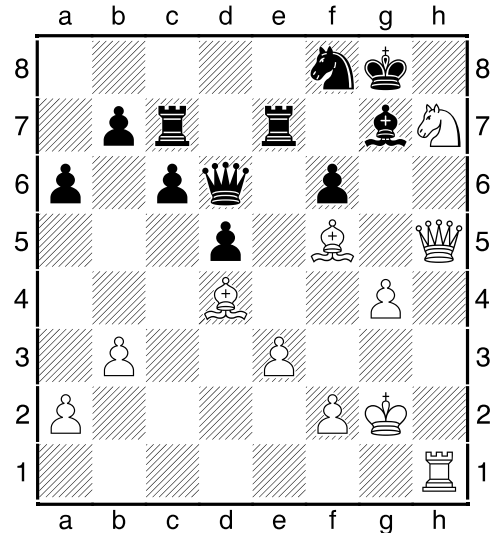


That's a key move – as the center is closed, White is ready for kingside action like g4; besides, Black is almost deprived of any space now. **24...Nef6** The only hope is e5 breakup. **25.g4 Re8** [Attempts such

as 25...hgx4 26.hgx4 Ne4 are unfounded:  
 27.Bxe4 dxe4 28.Qxe4 Nf6 29.Qf4 Nd5  
 30.Qg3 Nb4 31.Rd2 Nxa2 32.Rc4! a5  
 33.Ra4+-] **26.Kg2 hgx4** [File's "h" opening  
 is a dangerous idea, but e5 can't be made  
 otherwise: 26...e5? 27.dxe5 Nh7 28.gxh5  
 gxh5 29.Rg1+-] **27.hgx4 e5 28.dxe5 Nh7**  
**29.Rh1 Nhf8** [29...Nxe5 is impossible at  
 this moment because of old trick 30.Nxe5  
 Bxe5 31.Qh6 Nf8 32.Qh8+] **30.Qh2 Nxc5**



**31.Rxc5!!** [Excellent decision – queen is  
 distracted from king g8; 31.e6?! Bxb2  
 (31...f6 32.Bxg6) 32.Rxb2 Qf6 , and nothing  
 is clear yet.] **31...Qxc5 32.e6 f6**  
 [32...Nxe6 33.Qh8+; the main line is  
 32...Bxb2 33.Ne5! Bxe5 34.Qxe5 Nh7  
 35.exf7+ Kxf7 36.Rxh7+] **33.Bxg6 Rxe6**  
 [33...Nxg6 34.Qh7+ Kf8 35.Bxf6 with dis-  
 aster.] **34.Ng5!** Now all white pieces are  
 taking part in attack. **34...Re7 35.Bh7+**  
 [35.Qh5 Rcc7] **35...Kh8 36.Bd4**  
 [Straightforward 36.Bf5+ Kg8 37.Bxc8  
 would have lead to the goal quicker:  
 37...fxg5 38.Bxg7 Rxg7 39.Qh8+ Kf7  
 40.Rh3! , and rook's connection decides  
 the game.] **36...Qb4 37.Bg6+ Kg8**  
**38.Bh7+ Kh8 39.Bf5+** [Another path –  
 39.a3! Qxa3 40.Ra1 Qb4 41.Ra4 Qe1  
 42.Nf3 Qc1 43.Ra1 , and queen is  
 trapped.] **39...Kg8 40.Nh7 Rcc7 41.Qh5**  
 [And again, simple 41.Bxf6 Rf7 42.g5 wins  
 easily, but White has something else in  
 mind(42.Bxg7? Rxf5!) ] **41...Qd6**



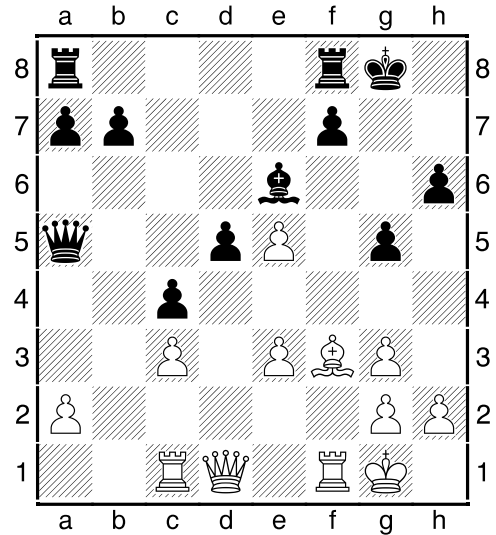
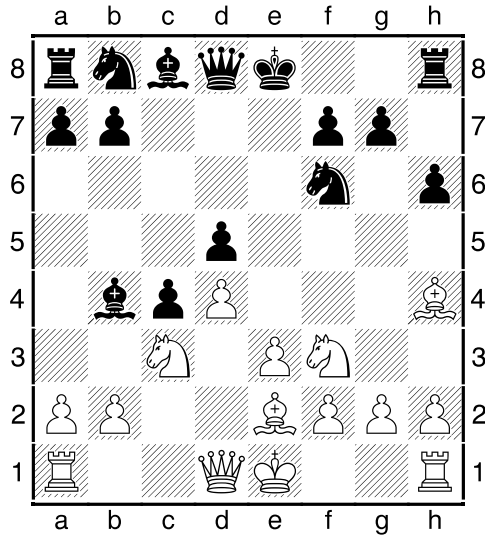
**42.b4!** Superb idea. There is only one way  
 against Bc5, but queen h5 is going to g6  
 then. **42...Nd7** [42...Qxb4 43.g5+-] **43.a3!?**  
 [43.Qg6 and that's it, though White has no  
 reason to be hurry.] **43...b6 44.Qg6 Ne5**  
 Now comes a simple, classical combina-  
 tion. **45.Nxf6+! Qxf6 46.Rh8+ 1-0**

**(08) Koneru,Humpy (2600) -  
 Hou,Yifan (2578) [D38]**

WCh w Tirana ALB (3), 17.11.2011

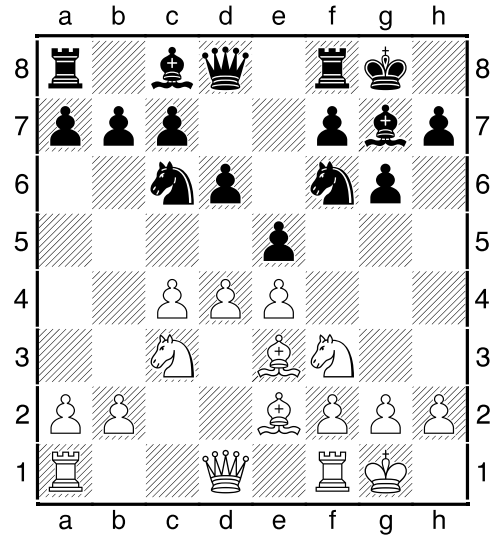
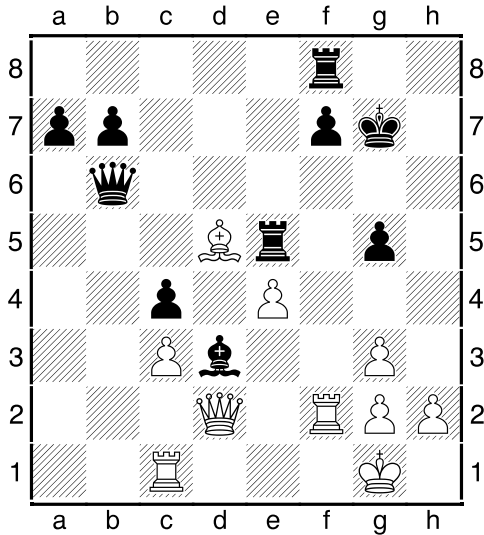
[IM Polivanov, A]

**1.d4 e6 2.c4 Nf6 3.Nf3 d5 4.Nc3 Bb4** Ra-  
 gozin Defence is becoming more and more  
 popular. **5.cxd5 exd5 6.Bg5 h6 7.Bh4 c5**  
**8.e3** [If 8.dxc5 , then 8...Nc6 9.a3 (9.e3 g5  
 10.Bg3 Ne4) 9...Bxc3+ 10.bxc3 g5 11.Bg3  
 Qa5 with good counterplay.] **8...c4!?**  
 [8...Nc6 9.Rc1 g5 10.Bg3 Ne4 could be  
 seen in Li Shilong–Le Quang Liem, CZM  
 10/2011] **9.Be2**



**9...g5** Black's main idea in this system – several pieces are assaulting to c3 at one time. **10.Bg3 Ne4 11.Rc1 Qa5 12.Ne5** [That's dernier cry, but approved 12.0-0 is not worse – 12...Bxc3 13.bxc3 Bf5 (13...Nxc3 14.Qd2 Nxe2+ 15.Qxe2 Bf5 16.e4!♞, opening all lines) 14.Ne5 0-0 (and again 14...Nxc3 fails: 15.Rxc3! Qxc3 16.Qa4+ Nd7 17.Qb5±) 15.Bg4f, Moiseenko–Aleksandrov, Kramatorsk 2001, and White is clearly better.] **12...Bxc3+** [12...Nxc3 13.bxc3 Bxc3+ 14.Kf1 Bb4 15.e4!→] **13.bxc3 Nc6** Of course, Black is willing to eliminate strong ♘e5 as soon as possible. **14.0-0 0-0!** [This is more reasonable decision, then 14...Nxc3 15.Rxc3! Qxc3 16.Bh5 0-0 17.Qf3 (17.Bxf7+ is enough only for a draw – 17...Rxf7 18.Nxf7 Kxf7 19.Qf3+ Kg7 20.Qxd5 Qd3 21.Be5+ Nxe5 22.Qxe5+=, Nielsen–Palac, ch–EUR 2011) 17...Nd8 18.Qf6 Qc2□ 19.Ng4! Bxg4 20.Be5! Qh7 21.Bxg4 Ne6, Topalov–Aronian, Amber 2011, and now in case of 22.Bf5! (instead of taking place 22.f4 Qg7 23.Qe7 Rae8 24.Qd7 Qh7 25.fxg5 f5!!♣) 22...Qg7 23.Qe7 Rfe8 24.Qxb7 Qf8 25.Qxd5± white bishops are just horrific.] **15.Bf3** In return, White also attacks ♘e4. **15...Nxc3** [15...Nxc3? is not an option anymore: 16.Nxc6! (16.Qd2? Ne4) 16...bxc6 17.Qd2+–] **16.fxc3 Nxe5 17.dxe5 Be6**

**18.Bh5!?** [Very brave. 18.Qd2 seems to be a solid reply, having in mind h4 and e4, but Black was gonna answer 18...f5! 19.exf6 Rxf6, and after Raf8 all is OK.] **18...Qxa2 19.Rf6 Qb2!** [Excellent idea. Realizing, that after 19...Kg7 20.Qf3 Qa5 21.Rf1 Qc7 22.h4! White's rush is too strong, Black "ties" queen d1 to ♖c1.] **20.Rxh6 Bf5** Now there won't be any of Rc2 or Rb1. **21.Rf6** [Otherwise ♖h6 will be aside: 21.Bf3 Bg6] **21...Be4?!** [It's better to not hesitate with 21...Bd3 – 22.Rf2 Qb6 23.Qf3, and 23...Rae8! secures Black's edge: 24.Bxf7+?! Kg7 25.e6 Rxe6–+] **22.Bf3?** [It was necessary to drive queen b2 away immediately: 22.Rf2 Qb6 23.Qd2, with further Rcf1 and tolerable posture. Now black queen continues to paralyze White's position.] **22...Bd3 23.Qe1** [23.Bxd5 Rad8 24.Rd6 Rxd6 25.exd6 Rd8♣, and Black is controlling the whole board.] **23...Rae8 24.Bxd5 Rxe5 25.e4 Kg7** [There was nothing wrong with 25...Bxe4 26.Rf2 Qa3 27.Bxe4 Rxe4 28.Qd2 Qc5, but Black has another intention – to conduct f7–f5.] **26.Rf2 Qb6 27.Qd2**



**27...Rd8!** Turns the beam – now in view of Bxe4 threat queen d2 has to step back, so f7–f5 will be conducted. **28.Qb2** [28.Bxf7 Bxe4 29.Qe1 Rf8 30.Bxc4 Ref5+] **28...f5!** **29.Qxb6 axb6 30.Bxb7 fxe4** The end-game is won easily owing to ♖e4. **31.Rb2 Re7!** [Simple 31...e3 was enough – 32.Rxb6 e2 33.Re1 Rf8 34.Bf3 g4+, but Hou Yifan decided to show an exceptional technique.] **32.Bc6** [32.Rxb6 Rb8] **32...Rd6** Bishop is driven away to the bad spot. **33.Ba4** [33.Rxb6 Rc7] **33...e3** The rest doesn't require any comment. **34.Re1 e2 35.Bc2 Rf7 36.Bxd3 cxd3 37.Rd2 Rdf6 0-1**

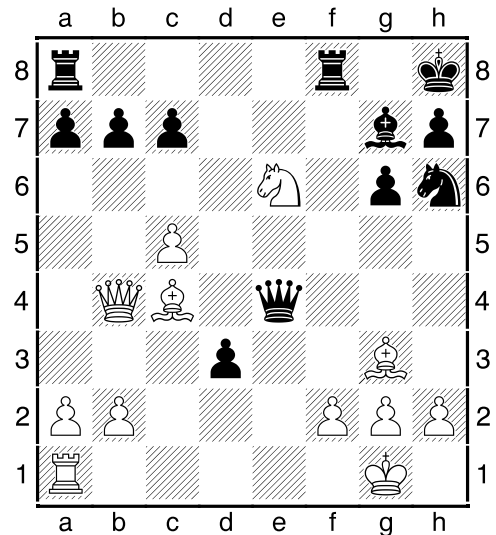
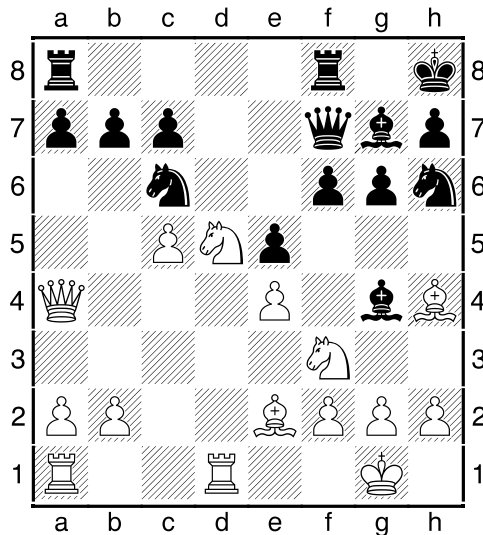
**(09) Landa,K (2639) - Saric,Iv (2643) [E97]**

Schachbundesliga 2011-12 Hockenheim GER (4), 2011

[IM Polivanov, A]

**1.d4 Nf6 2.c4 g6 3.Nc3 Bg7 4.e4 d6 5.Be2 0-0 6.Nf3 e5 7.0-0 Nc6 8.Be3!?**

[This is a decent way to avoid well-known lines 8.d5 Ne7 ...] **8...Ng4 9.Bg5 f6 10.Bh4 Nh6** Black is threatening with g5–g4, so White has to relieve tension in center. **11.dxe5 dxe5 12.c5 Kh8** Black wants to play Bg4 in order to fight for the point d4, that's why he moved 12...Kh8 – Qb3+ is not dangerous anymore. **13.Qa4** [White could prevent to the opponent's plans, like in the following game: 13.h3!? Be6 14.Qa4 Qe8 15.Rad1 f5 16.Bb5! a6 17.Bxc6 bxc6 (M7...Qxc6) 18.exf5 gxf5 19.Rfe1, Suba-Watson, New York 1987 19...Nf7 20.Bg3! f4 21.Bh4±] **13...Bg4N** [Earlier met 13...Qe8 14.Rfd1 (14.Nd5 Nd4) 14...Bg4 15.Rd2 Bxf3 16.Bxf3 Nd4 17.Bd1 Qxa4 18.Bxa4 g5 19.Bg3 f5 1/2, Golod–Frolov, Simferopol 1991] **14.Rfd1 Qe7** [I guess, Frolov did quite right when he put queen at e8: 14...Qe8 15.Nd5?! Nd4 16.Qxe8?! Nxe2+ 17.Kf1 Raxe8 18.Kxe2 f5+ ; now Nd5 goes with tempo.] **15.Nd5 Qf7**



[15...Qxc5 16.Rac1! Qd6 17.Nxf6 Nd4 18.Nxd4 Bxf6 19.Nf3±] **16.Bg3!?** Interesting positional move, sense of which will be revealed later. **16...Bxf3 17.Bxf3 f5!** [As it turned out, 17...Nd4 faces 18.Rxd4! exd4 19.Bxc7 , and black pieces are very located pretty bad (♘h6): 19...f5 20.e5 d3 21.Qd4 with huge edge.] **18.Be2** Going to c4 to disturb queen f7. **18...Nd4** [Exchange sacrifice is not so unpleasant as one move before, but maybe it was necessary to turn a bishop g3 off anyway: 18...f4! 19.Bh4 Nd4 20.Bc4 c6! (20...f3 21.Rxd4! exd4 22.Bg3f) 21.Nc3 Qc7 22.Ne2 b5! 23.cxb6 axb6 24.Qb4 Nc2 25.Qe7 Qxe7 26.Bxe7 Nxa1 27.Bxf8 Bxf8 28.Rxa1 Rd8 , and Black is even better.] **19.Rxd4** White is conducting his main idea, though 19.Bc4 was safer. **19...exd4 20.Bc4 Qe8** [20...fxe4 21.Nxc7 Qf6 22.Nxa8 Nf5! 23.Bf4 Nh4 24.Bg3 Nf5= , but Black, obviously, wants more.] **21.Qb4 f4?!** [Apparently, Saric was afraid of 21...Qxe4 22.Nxc7 (22.Re1 Qc2 23.Re2 a5!) , but 22...f4 23.Bh4 Nf5 24.Bg5 f3! would have made things difficult for White: 25.Nxa8 Qg4 26.g3 d3!-+] **22.Nxf4 Qxe4 23.Ne6** Knight attacking almost all Black's forces. **23...d3??**

Probably, Black thought, that ♘e6 will take rook as the most valuable piece. But... **23...Nf5 24.Nxf8 Rxf8 25.Re1** **24.Nxg7!** Without Gufeld's bishop Black is just defenceless. **24...Kxg7 25.Re1 Qf5** [25...d2 26.Rxe4 d1Q+ 27.Re1 barely changes anything.] **26.Be6!** [The most exact way to formalize a victory; 26.Be5+ Rf6 still leaves some questions.] **26...Qg5 27.Be5+ Rf6 28.f4! Qxe5** Seems like desperation, but from computer point of view, this is the strongest. [28...Qh4 29.g3 Qh5 30.Bxf6+ Kxf6 31.Qc3+ with mate.] **29.Rxe5 Re8 30.Bb3 Rd8 31.Re7+ Kf8 32.Rxh7 a5 33.Qc3** One should care about bishop g7! **1-0**

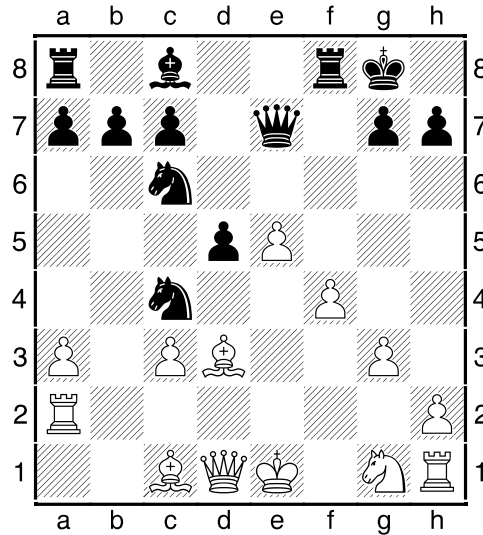
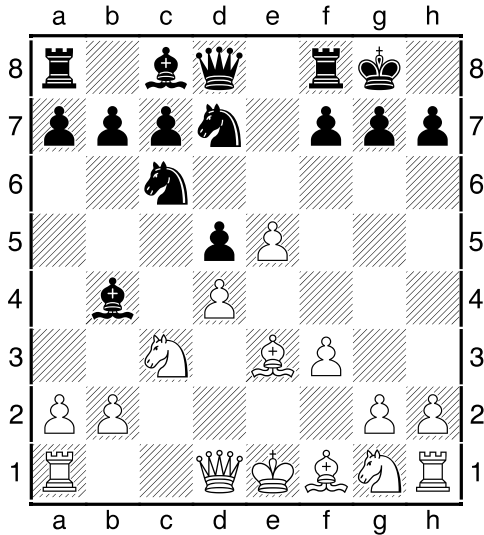
**(10) Spoelman,W (2563) - Macieja,B (2613) [E20]**

Schachbundesliga 2011-12 Dortmund GER (4), 2011

[IM Polivanov, A]

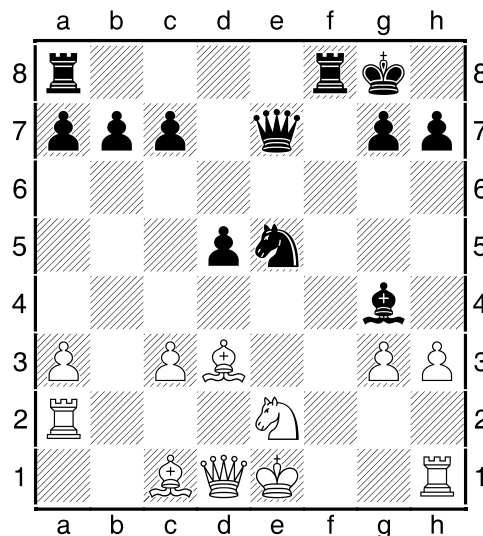
**1.d4 Nf6 2.c4 e6 3.Nc3 Bb4 4.f3 Nc6 5.e4** Curious opening transitions – this position can also arise from 1.c4 Nf6 2.Nc3 e6 3.e4 Nc6 4.d4 Bb4 5.f3. **5...0-0** [Usually Black prefers to strike the center at once: 5...d5 6.cxd5 exd5 7.e5 Ng8 8.f4 Nh6!?, Shirov-Tiviakov, Wijk aan Zee 2001, counting on 9.Be3?! Ng4 ; now bishop can occupy square e3.] **6.Be3 d5 7.e5 Nd7 8.cxd5 exd5**





**9.a3?!N** [Now White is delayed with development too much. **9.f4 Nc5!** 10.Nf3 (10.dxc5 d4 11.a3 Bxc3+ 12.bxc3 dxe3 13.Qxd8 Rxd8 14.Ke2 Rd5) 10...Ne4 11.Rc1 Ne7 12.Bd3 Nf5(12...Bg4?! 13.0-0 Nf5 14.Bf2 Nxf2 15.Rxf2± , Gozzoli–Le Roux, Hyeres 2002) ] **9...Bxc3+ 10.bxc3 f6!** Black is trying to open the position, which is very reasonable, taking king e1 into account. **11.f4 fxe5 12.dxe5** [12.fxe5? Qh4+ 13.g3 Qe4] **12...Nb6** [Sacrifice 12...Ndx5 is premature for this moment: 13.fxe5 Nxe5 (13...Qh4+ 14.Kd2 Nxe5 15.Nf3 Nxf3+ 16.gxf3±) 14.Nf3 Bg4 15.Be2 Bxf3 16.gxf3 Qh4+ 17.Kd2 , and there is nothing decisive.] **13.Bd3?!** [13.Nf3!] **13...Nc4 14.Bc1** [14.Bxc4 already seems illogical – it was necessary to start with 13.Nf3 then; maybe, White was hoping for 14.Qh5 g6 15.Bxg6 Qd7 (15...hxg6=) 16.Bc5 hxg6 (16...Rxf4 17.Ne2+-) 17.Qxg6+ Qg7 18.Qxg7+ Kxg7 19.Bxf8+ Kxf8 20.h3 with any possible result, but 14...h6! makes this complications needless.] **14...Qh4+** Causing new weakenings. **15.g3 Qe7 16.Ra2**

[16.Nf3 Qc5! ; that's why White wants to have an opportunity Rf2 here, but...] **16...N6xe5!** Here comes a punishment. **17.fxe5 Nxe5 18.Ne2** [18.Re2 Bg4; 18.Be2 also fails: 18...Bf5! 19.Qxd5+ Kh8 20.Rd2 Bd7!-+] **18...Bg4** [18...Qc5!? was promising too: 19.Qc2 Qf2+ 20.Kd1 Qg2 21.Re1 Rf1 22.Bd2 Nf3→] **19.h3 Nf3+ 20.Kf1** [20.Kf2 Qc5+ 21.Be3 (21.Kg2 Nh4+!) 21...Ne5+ 22.Nf4 Bxd1 23.Bxh7+ Kxh7 24.Bxc5 Nd3+ 25.Kg2 Nxc5 26.Rxd1 c6-+] **20...Ne5+ 21.Ke1** [21.Bf4 Bf3 22.Rh2 Nxd3 23.Qxd3 Be4 24.Qe3 g5-+] **21...Nf3+ 22.Kf1 Ne5+ 23.Ke1**



**23...Bf3!** The best continuation of attack, which should bring a victory. **24.Rf1** [24.Rh2 isn't an option too: 24...Be4

25.Bxe4 dxe4+] **24...Bg2 25.Rxf8+** e1 still hasn't place to hide. The end of  
[25.Rg1 Qc5! 26.Rxg2 Nf3+ 27.Kf1 Nh2+ story is coming. **27.Kf2 Bxh3 28.Bb1 c6**  
28.Ke1 Rf1+ 29.Kd2 Nf3+ 30.Kc2 Rxd1 **29.Qh1 Bg4 30.Kg1 gxf4 31.gxf4 Ng6**  
31.Kxd1 Rf8-+] **25...Rxf8 26.Bf4** [26.Kd2 **32.Qg2 Qe3+ 33.Kh2 Bxe2 34.f5 Qf4+**  
Nxd3 27.Kxd3 Qe4+ 28.Kd2 Rf1 29.Qc2 **35.Qg3 Qxg3+ 36.Kxg3 Bc4 37.Rg2 Ne7**  
(29.Qb3 Rf3) 29...Qc4-+] **26...g5+** Black **0-1**  
restoring a material balance, whereas king

***Editorial staff:***

IM Anatoliy Polivanov (ELO 2356)

IM Tarlev Konstantin (ELO 2520)

IM Sergey Perun (ELO 2345)

Chief editor Roman Viliavin (ELO 2248)

email: [chesszone@ya.ru](mailto:chesszone@ya.ru)