

ChessZone Magazine



Table of contents: # 08, 2013

Games	4
(01) Zakhartsov, Viacheslav (2560) - Greenfeld, Alon (2561) [C11]	4
(02) Akshat, Khamparia (2354) - L'Ami, Erwin (2640) [E20]	5
(03) Brunello, Sabino (2593) - Cheparinov, Ivan (2678) [D85]	6
(04) Negi, Parimarjan (2634) - Brunello, Sabino (2593) [C63]	8
(05) Antipov, Mikhail (2488) - Naroditsky, Daniel (2503) [B40]	9
(06) Naroditsky, Daniel (2503) - Vovk, Andrey (2581) [B31]	11
(07) Socko, Bartosz (2646) - Kveinys, Aloyzas (2491) [E32]	12
(08) Nabaty, Tamir (2567) - Nevednichy, Vladislav (2573) [D01]	13
(09) Kharitonov, Alexandr (2547) - Nabaty, Tamir (2567) [D20]	14
(10) Ashwin, Jayaram (2478) - Mastrovasilis, Athanasios (2541) [C65]	15
Editorial staff:	17

Dear readers!

**ChessZone Magazine is open for your advertising materials.
We have various ad packages at affordable rates!**

**We're also interested in cooperation with advertising agencies,
and could offer great commissions for anyone
who could bring an advertisers to us.**

**Please contact us for details
chesszone@ya.ru**

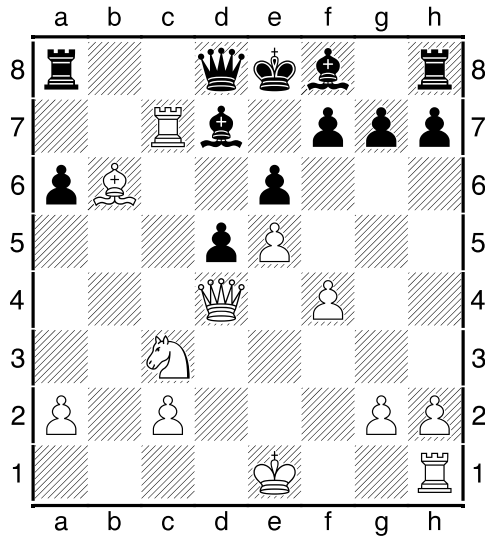
Games

(01) Zakhartsov, Viacheslav (2560) - Greenfeld, Alon (2561) [C11]

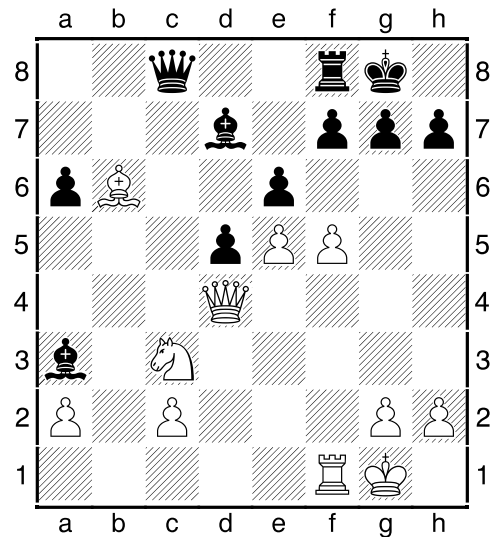
Open NK Dieren (8), 31.07.2013

[IM Sitnikov, A]

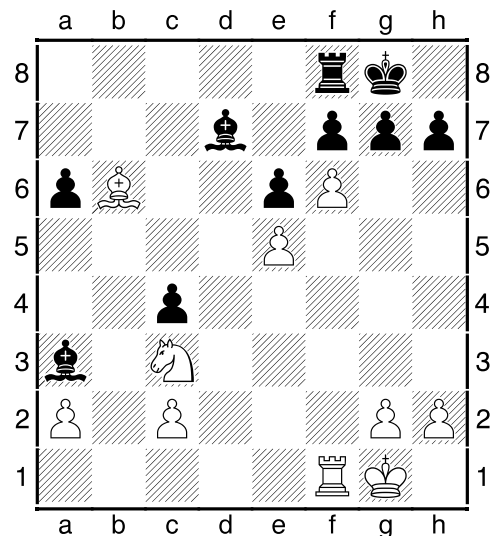
1.d4 e6 2.e4 d5 3.Nc3 Nf6 4.e5 Nfd7 5.f4 c5 6.Nf3 Nc6 7.Be3 c:d4 8.N:d4 Qb6 9.Qd2 Q:b2 10.Rb1 Qa3 11.Bb5 N:d4 12.B:d4 a6 13.B:d7+ B:d7 14.Rb3 Qe7 15.R:b7 Qh4+ 16.Bf2 Qd8 17.Bb6 Qc8 18.Rc7 Qd8 19.Qd4



White bet on the pieces activity. If black can lossless complete the development, he will receive at least equal chances due to a pair of bishops, strong pawn structure and reliable cover for king. This option last years began to meet in high level tournaments. The most striking loyal to it, American grandmaster Hikaru Nakamura, who three times successfully passed the test by black against the harsh guard examiners in the persons of Sergey Karjakin, Vishy Anand, Peter Leko... **19...Ba3 20.0-0N** [Or, for example 20.Nb1 Be7 21.c4 Rb8 22.Nd2 0-0 23.c:d5 e:d5 24.0-0 Bf5 and black gradually equalize the game / Leko, P (2744) – Nakamura, H (2767) / FRA 20.04.2013] **20...0-0 21.f5** [After 21.Nb1 Be7 22.c4 f6 23.Nc3 f:e5 24.f:e5 Rc8 white can win a pawn, but then the position becomes opened and powerful black bishops say its word] **21...Rc8 22.R:c8 Q:c8**



23.f6 [In case of 23.Nb1 Bb5! 24.N:a3 B:f1 25.K:f1 f6 black attack with overwhelming force, because the white knight occupies extremely ludicrous position] **23...Qc4! 24.Q:c4 d:c4**

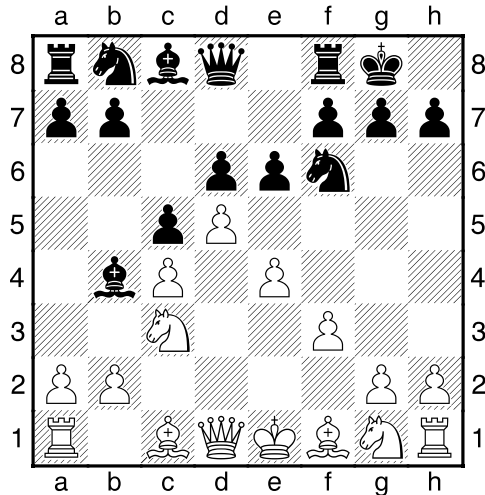


Timely exchange black solved all the problems, and the draw is not far off. Thus, the attempt of white tip the scales in his favor failed. **25.Rd1 Bc6 26.Rd4 Rb8 27.Ba7 Ra8 28.Bb6 Rb8 29.Ba7 Ra8 30.Bb6 1/2**

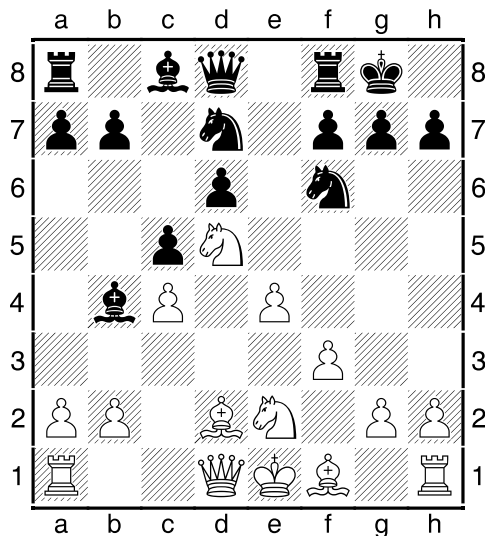
(02) Akshat, Khamparia (2354) - L'Ami, Erwin (2640) [E20]

Open NK Dieren (9), 01.08.2013
[IM Sitnikov, A]

1.d4 Nf6 2.c4 e6 3.Nc3 Bb4 4.f3 c5 5.d5 0-0 6.e4 d6

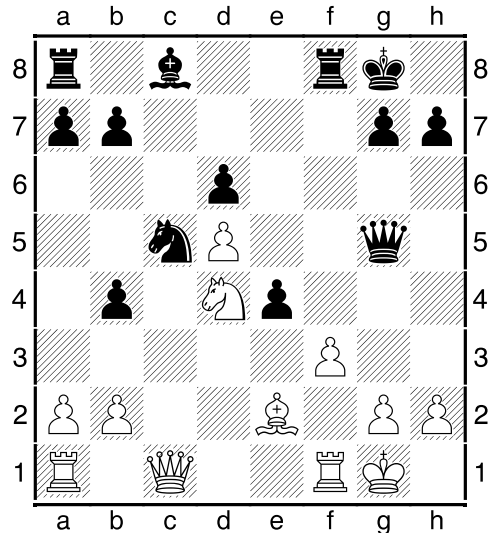


In theory known option: 1. d4 Nf6 2. c4 e6 3. Nc3 c5 4. d5 ed 5. cd Bd6 , next bishop follows the route d6-c7-a5 , and only then walks pawn d7-d6. In this game the similar position, but black managed to hoist the bishop on the same diagonal by one move! Under such conditions it is hardly white can get the opening advantage. **7.Bd2 Nbd7 8.Nge2 e:d5N 9.N:d5?!**

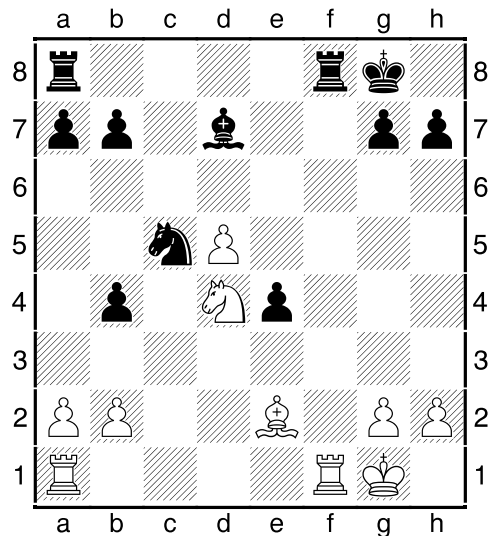


Pawn structure defines the strategy. White has a strong centre and space advantage,

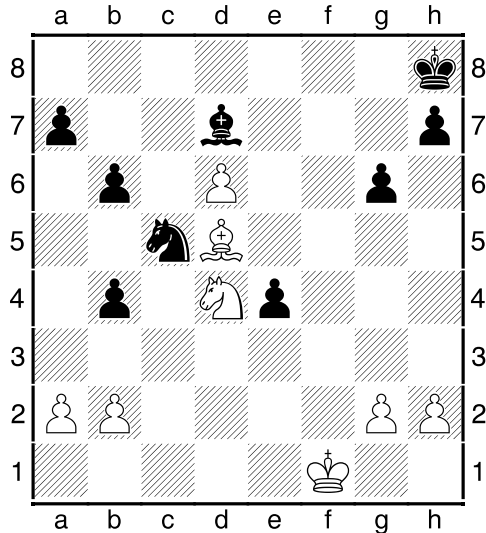
which gives them a broad margin for manoeuvre. But if pieces one after another leave the board – what maneuver? Each exchange on the black hand. In addition, the center immediately falls under the shock. Therefore it was necessary to capture on d5 by pawn... **9...N:d5 10.c:d5 f5 11.B:b4 c:b4 12.Nd4** [After 12.e:f5 Qe7 13.Kf2 Ne5 14.Nd4 B:f5 15.Kg1 Qf7 central white pawn doomed] **12...Nc5 13.Be2 f:e4 14.0-0 Qg5 15.Qc1**



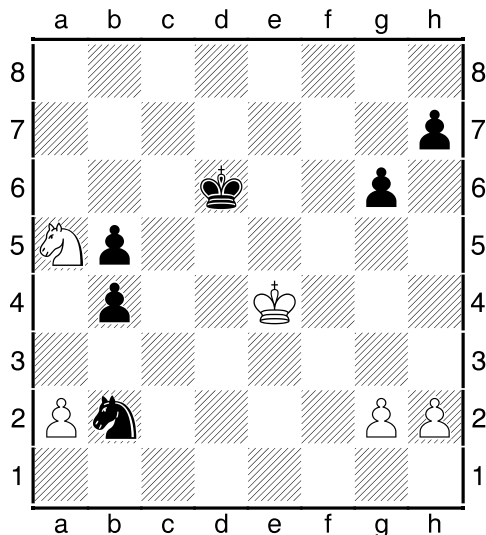
15...Qe5 [Interesting looked 15...e3 16.g3 Bh3 17.f4 Qf6 18.Q:e3 Rae8 19.Qd2 B:f1 20.B:f1 a5 and here, though white have a powerful outpost e6, black's position is preferable due to the presence of opened line "c"] **16.Qe3 e:f3 17.Q:e5 d:e5 18.N:f3 e4 19.Nd4 Bd7**



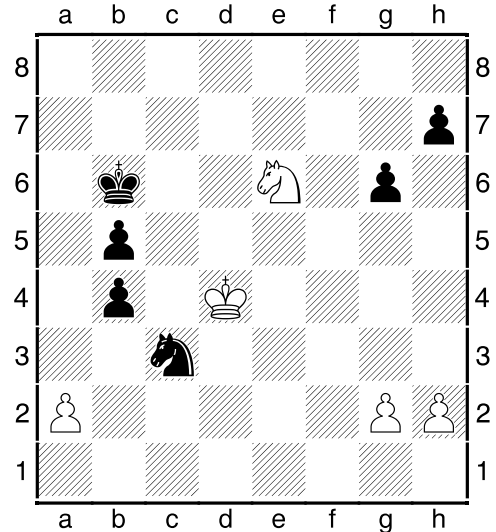
Doubled pawns perfectly complement each other: one is ready to protect the knight, and the other does not give the opponent to disturb the knight. **20.Bc4 Rac8 21.d6+ Kh8 22.Bd5** [In case of 22.a3 a5! 23.a:b4 a:b4 24.Bd5 g6 25.Ra7 Ra8 26.R:a8 R:a8 black hold strong placed knight and has great chances to surround the enemy's passed pawn] **22...b6 23.R:f8+ R:f8 24.Rf1 R:f1+ 25.K:f1 g6**



The black king steady at supporting his pawn and attacking the enemy. **26.Nc6 a5 27.Ne5 Kg7 28.Kf2** [Not helped 28.N:d7 N:d7 29.Be6 Nc5 30.Bc8 Kf7 31.Ke2 b3 32.a:b3 N:b3 33.Ke3 Nc5 34.Kd4 a4 35.g3 Ke8 36.Bh3 Kd8 37.Bg4 Nd3 38.Kc3 b5 and black win] **28...Kf6 29.Nc4 Be6 30.B:e6 K:e6 31.Ke3 b5 32.N:a5 K:d6 33.Kd4 Na4 34.K:e4 N:b2**



Mass pawn exchanges have not changed the position evaluation. Now two pawns are blocked by white one, but this orphan little time to live. **35.Kd4 Na4 36.Nb7+ Kc6 37.Nd8+ Kd7 38.Nb7 Kc6 39.Nd8+ Kb6 40.Ne6 Nc3**



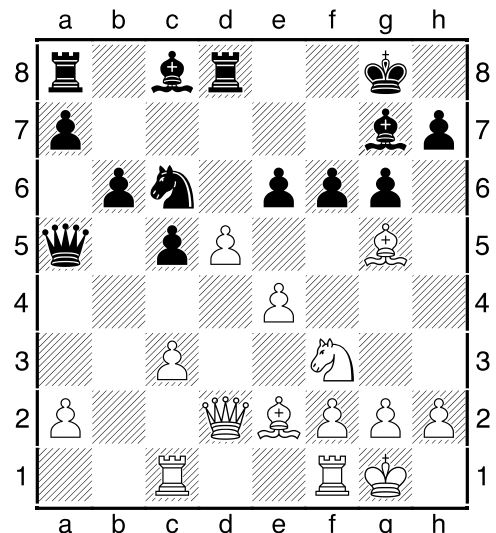
And so entered the executioner's axe. **41.Kd3 N:a2 42.Kc2 Ka5 43.Kb2 Nc3 44.Kb3 Ne4 45.Nf8 Nc5+ 46.Kb2 b3 47.Ka3 b4+ 48.Kb2 Ka4 49.N:h7 Nd3+ 50.Kb1 Ka3 51.Ng5 Nc5** Not waiting for a further Na4-c3, white resigned. **0-1**

(03) Brunello, Sabino (2593) - Cheparinov, Ivan (2678) [D85]

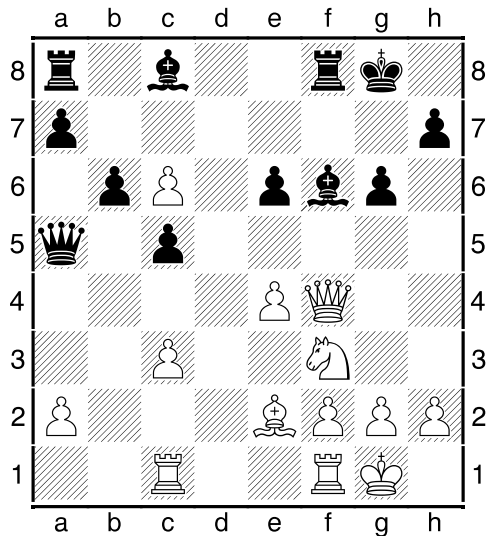
Politiken Cup Helsingor (9), 03.08.2013

[IM Sitnikov, A]

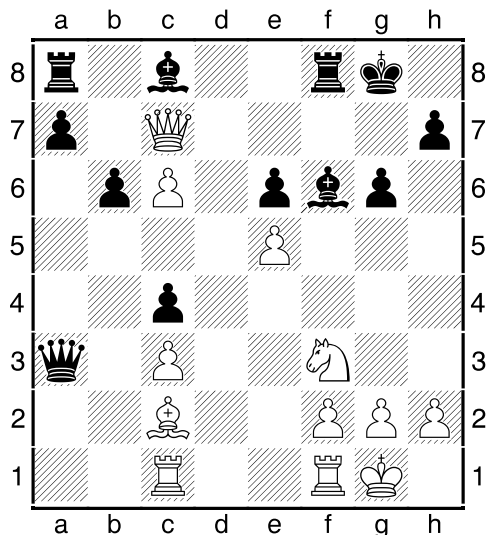
1.d4 Nf6 2.c4 g6 3.Nc3 d5 4.c:d5 N:d5 5.e4 N:c3 6.b:c3 Bg7 7.Nf3 c5 8.Be3 Qa5 9.Qd2 0-0 10.Rc1 Rd8 11.d5 e6 12.Be2 Nc6 13.0-0 b6 14.Bg5 f6



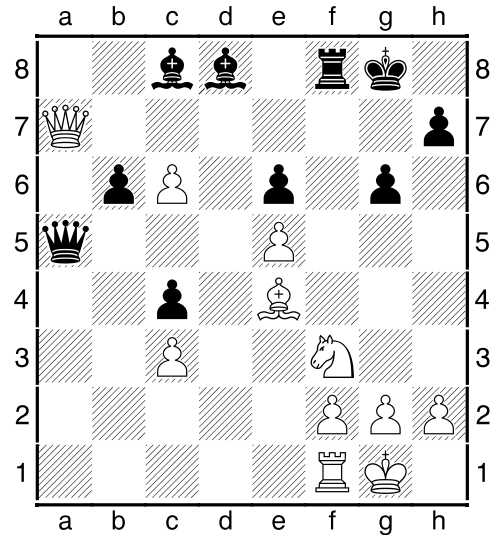
As often happens in Gruenfeld, black arranged a queen on the side of the board, then cut off his retreat, and now even weaken the cover of king. In previously played games such liberty remained unpunished. Here white provides an important strengthening of the option. **15.B:f6!N** [15.Bf4 Ba6 16.Rfd1 e5 17.Be3 Qa4 18.h4 B:e2 19.Q:e2 Na5 20.c4 Qd7 21.Nh2 Nb7 22.h5 Nd6 with good play for black / Valenzuela Fuentealba, L (2438) – Mikhalevski, V (2526) / Linares Chile op 2003] **15...B:f6 16.Qf4 Rf8 17.d:c6**



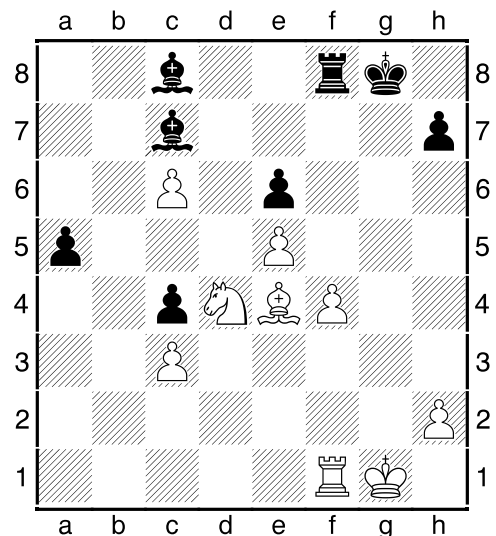
White pawn could only dream of such a career! And soon will join her colleague, by e4–e5 planting second black elephant in a cage. Strategically the battle is won... **17...Q:a2 18.Bd3 Qa4 19.Qc7! c4** [In case of 19...Rf7 20.Qd6 Be7 21.Qg3 Arsenal white is added by the idea of storming h2–h4–h5] **20.Bc2 Qa3 21.e5**



21...Be7 [After 21...Rf7 22.Qd6 Be7 23.Qd4 Qc5 24.Qg4 Rb8 25.Be4 b5 26.h4 b4 27.h5 b3 28.h:g6 h:g6 29.Q:g6+ Rg7 30.Qe8+ Bf8 31.Rcd1 Qe7 32.Qh5 Qf7 33.Qh3 a5 34.Rd8 Qe7 35.Rfd1 a4 36.Nh2 white orchestra plays the winning symphony] **22.Ra1 Qc5 23.R:a7 R:a7 24.Q:a7 Bd8 25.Be4 Qa5**

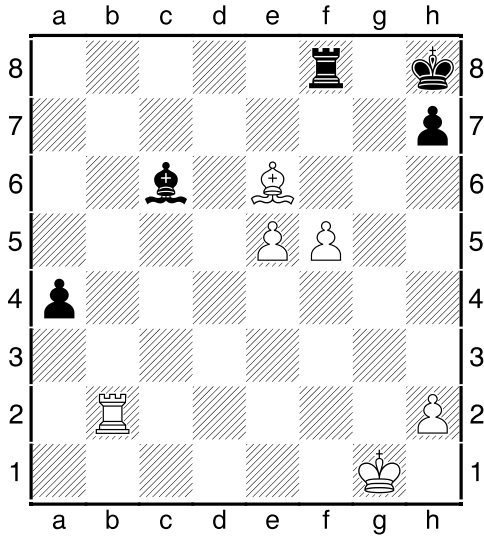


26.Q:a5 [Immediately won 26.Qb8 Be7 27.c7 Qa6 28.h3 Kg7 29.Rd1 b5 30.Nd4 material losses inevitable for black] **26...b:a5 27.Nd4 Bc7 28.f4 g5 29.g3 g:f4 30.g:f4**



Both in the endgame black die as a result of helplessness of bishops. **30...a4 31.Bb1 Ba5 32.Ba2 B:c3 33.Nb5 Bb2 34.B:c4**

Ba6 Like finally found a long-awaited freedom – but too late. **35.Rb1 B:b5 36.B:e6+ Kh8 37.R:b2 B:c6 38.f5**



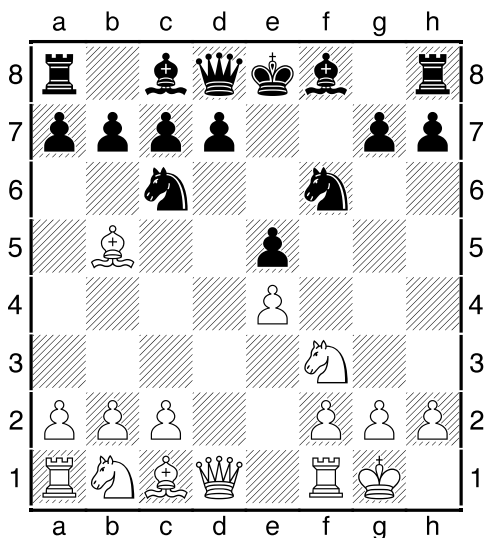
38...a3 39.Rd2 Be4 40.f6 h5 41.Ba2 Bg6 42.Kf2 Kh7 43.Rd7+ Kh6 44.Ra7 Kg5 45.f7 1-0

(04) Negi, Parimarjan (2634) - Brunello, Sabino (2593) [C63]

Politiken Cup Helsingor (10), 04.08.2013

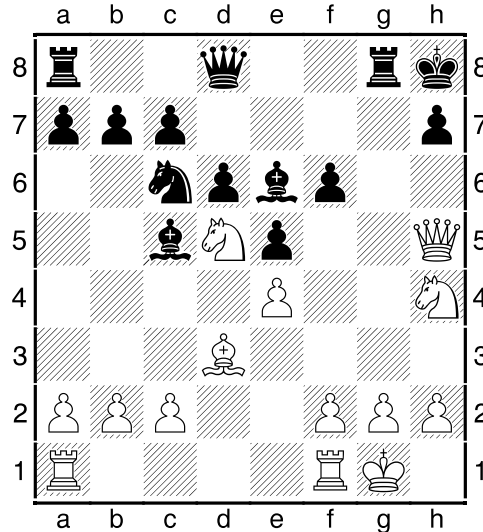
[IM Sitnikov, A]

1.e4 e5 2.Nf3 Nc6 3.Bb5 f5 4.d3 f:e4 5.d:e4 Nf6 6.0-0

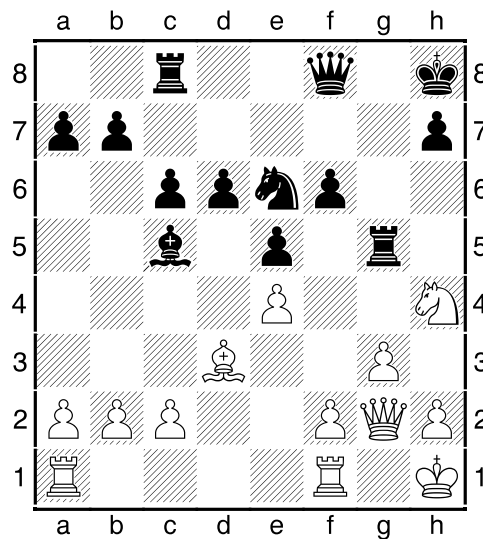


In the previous edition of our magazine we saw the game Kovalev – Oleksienko , where after 6. Qd3 Bb4 black managed to

prevent the journey of the white knight on a route b1-c3-d5. Thus, the immediate castling is stronger... **6...Bc5 7.Nc3 d6 8.Bg5 0-0 9.Nd5 Kh8 10.Nh4 Be6 11.B:f6 g:f6 12.Qh5 Rg8 13.Bd3!?**N

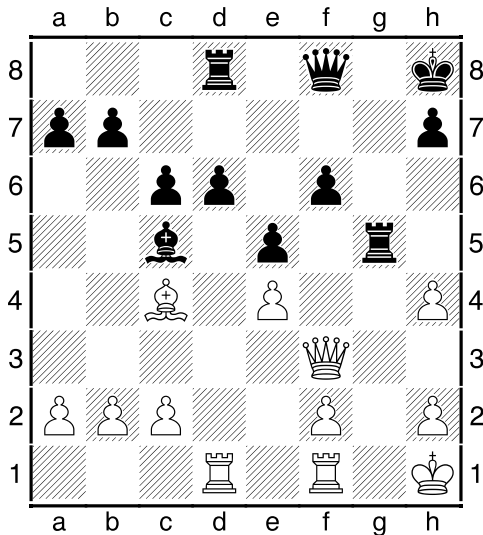


Here bishop takes more sensible position... **13...Qf8 14.Qf3 Rg5** [The idea of the 13th white move is manifested by option 14...B:d5 15.e:d5 Ne7 16.Nf5 N:f5 17.B:f5 with the fixation of weak fields, and then white can open the game by f2–f4 at the right moment] **15.g3 Nd4 16.Qg2 c6 17.Nc7 Rc8 18.N:e6 N:e6 19.Kh1**

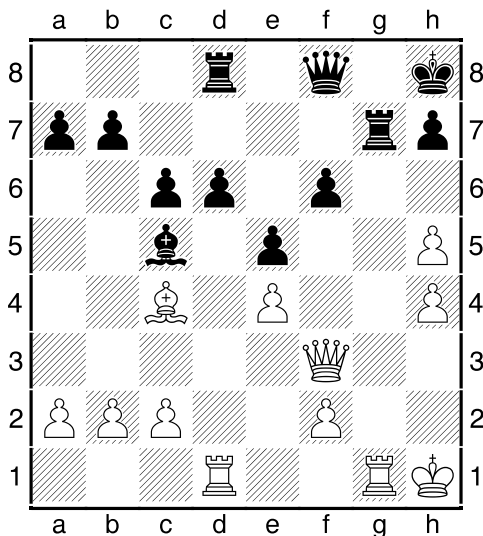


The position of white is better, because when emerging actions kingside black may not be enough protective resources – his

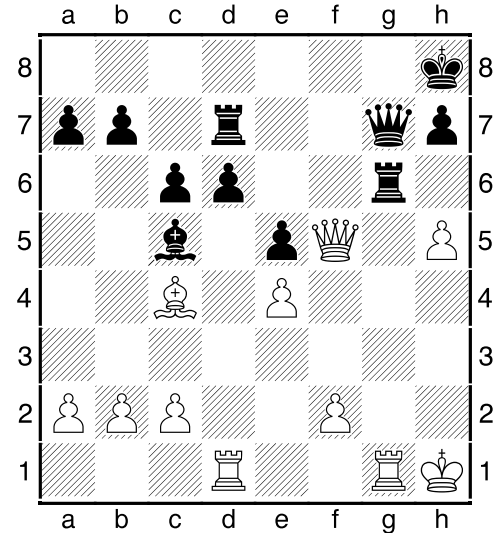
bishop only shoots into the void. But how much realistic is this factor – the game will show. **19...Rd8 20.Rad1 Nf4 21.Qf3 Ng6 22.Bc4!** The move is good itself because it does not give black conduct d6–d5, and in addition, it is interesting provocation... **22...N:h4 23.g:h4**



Black could not resist the temptation to violate the pawn structure of the opponent, but now when line "g" opened, pinpoint accuracy is required of black... **23...Rg6 24.h5 Rg5 25.h4 Rg7 26.Rg1**



26...Rdd7?! Such a play has no salt, no pepper. Needed, through f6–f5, strike up any fight. **27.h6 Rg6 28.h5 Q:h6 29.Q:f6+ Qg7 30.Qf5**



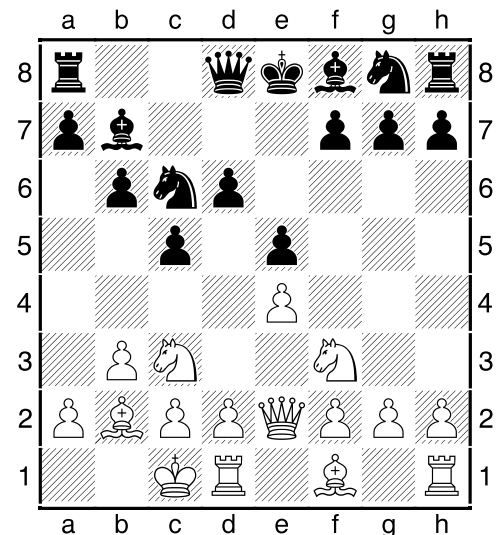
30...Rd8?? Last jumpy wave of the wand. [But after 30...Qh6 31.a4 R:g1+ 32.R:g1 Rd8 33.Rg4 Bb6 black, even passive, survived!] **31.h:g6 1-0**

(05) Antipov, Mikhail (2488) - Naroditsky, Daniel (2503) [B40]

RTU Open, Riga (4), 07.08.2013

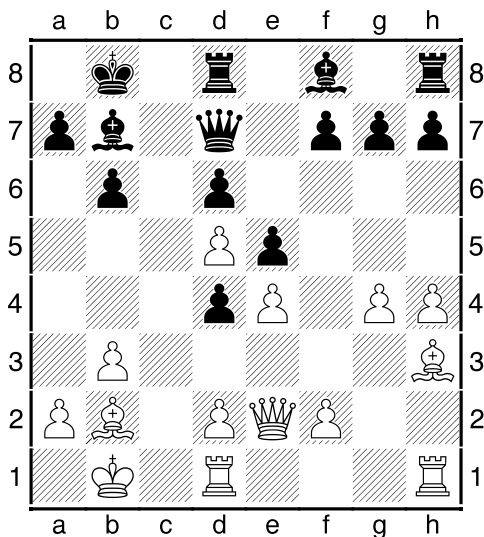
[IM Sitnikov, A]

1.e4 c5 2.Nf3 e6 3.b3 b6 4.Bb2 Bb7 5.Qe2 Nc6 6.Nc3 d6 7.0-0-0 e5

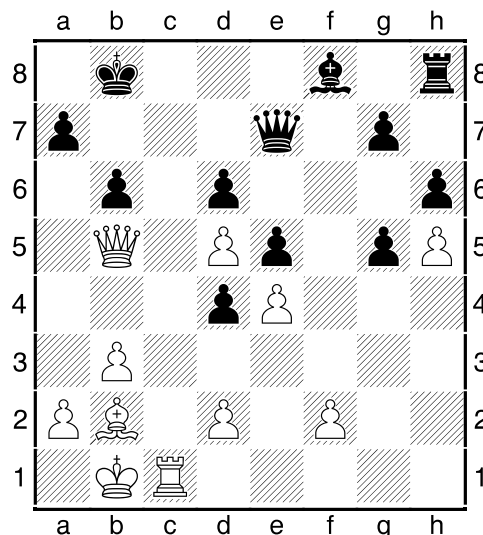


8.g4!N Great idea. White extend the scope of action and the opponent already unlikely to do short castling. After move g4–g5 white keeps diagonal h3–c8 and black bishop can not boast of easy life...

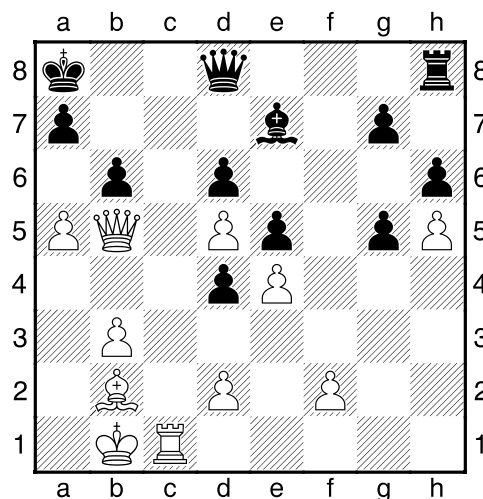
8...Nge7 9.Nd5 Qd7 10.c4 0-0-0 11.h4 Nd4 12.N:d4 c:d4 [Both after 12...e:d4 13.Bh3 Kb8 14.g5 Qe8 15.Qf3 Bc8 16.B:c8 R:c8 17.Rde1 the advantage of white is not in doubt] **13.Kb1 Kb8 14.Bh3 N:d5 15.c:d5**



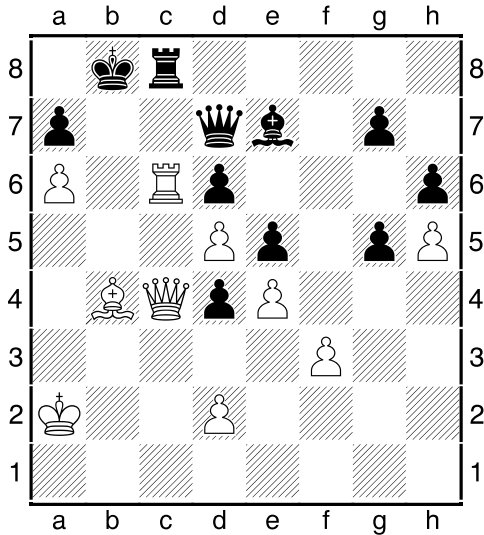
Location pawns in the centre almost symmetrically, but white is far ahead of the opponent in development. Here you can remember the loss of time in the opening by moves e7-e6-e5. In addition, white no movement d2-d3, and this gives the opportunity at the right moment to throw a Queen on c4 and b5. At the same time, his black colleague only get in the way of his own pieces... **15...h6 16.g5 Qe7 17.g6!?** It is quite logical pawn sacrifice. White do not allow the opening of "h" line and leave the black pieces in the role of extras... **17...f:g6 18.Rc1** Perhaps it is more accurate f2-f4, adding in the asset new open lines. **18...g5?!** [After cold-blooded capture 18...Q:h4 19.Be6 Qf4 20.Rh3 Be7 21.Rf3 Qg5 is there something other than moves repetition for white?] **19.h5 Bc8 20.B:c8 R:c8 21.R:c8+ K:c8 22.Rc1+ Kb8 23.Qb5**



23...Qd8 24.a4 Be7 25.a5 Ka8 26.Qc6+ Kb8 27.Qb5 Ka8



28.b4 [Another way to victory: 28.a6 Qe8 29.Qc4 Qd7 30.Qc7 Q:c7 31.R:c7 Re8 32.Ba3 Bf8 33.Rd7 Kb8 34.Kc2 and black remains only to stall, and white, with a decisive effect transfers the king to the right flank] **28...b:a5 29.b:a5 Qe8 30.Rc6 Qd7 31.Qc4 Kb8 32.a6 Rc8 33.Ba3 Bf8 34.Ka2 Be7 35.f3 Bf8 36.Bb4 Be7**



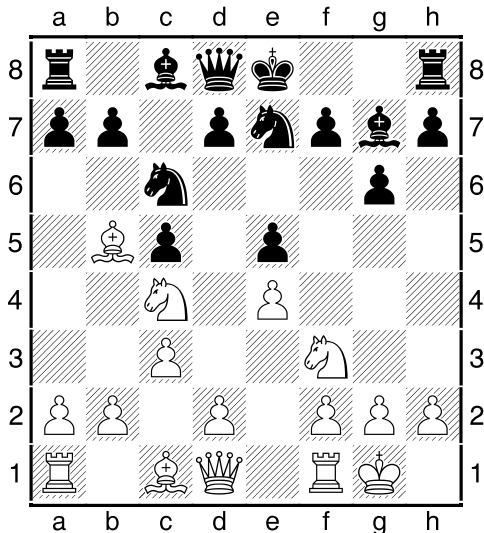
37.Ba5 The threat Bb6 , no good defense... **37...Bd8 38.Qb5+ Ka8 39.R:c8+ Q:c8 40.Qb7+ Q:b7 41.a:b7+ K:b7 42.B:d8 1-0**

(06) Naroditsky, Daniel (2503) - Vovk, Andrey (2581) [B31]

RTU Open, Riga (7), 09.08.2013

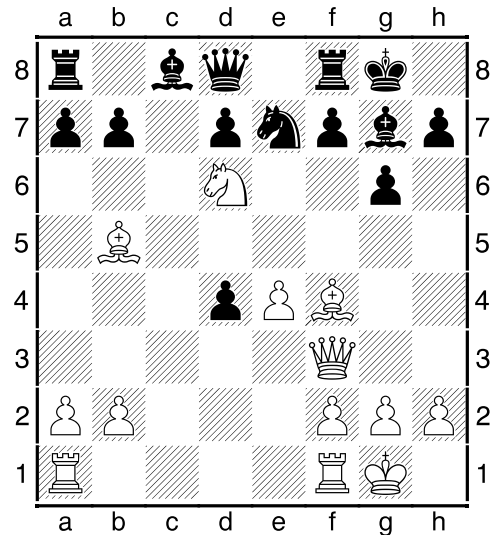
[IM Sitnikov, A]

1.e4 c5 2.Nf3 Nc6 3.Bb5 g6 4.0-0 Bg7 5.c3 e5 6.Na3 Nge7 7.Nc4

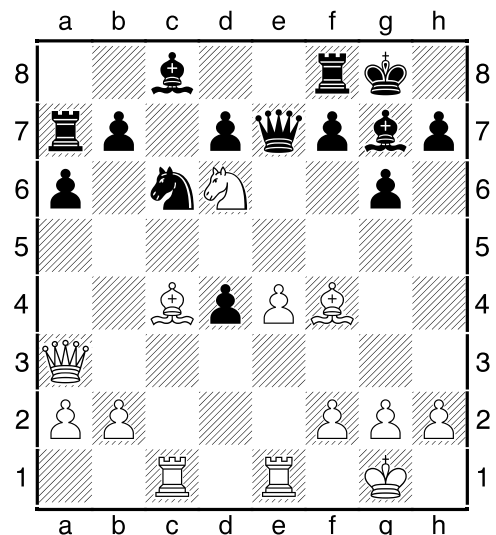


7...Qc7? This option has never met in the repertoire of the Lviv grandmaster. Queen move is a big mistake because white soon occupy the outpost d6 for a long time... [Theory advises 7...0-0 8.Nd6 Qc7 9.N:c8 Ra:c8 10.d3 d5 with mutual chances] **8.d4!**

c:d4 9.c:d4 N:d4N [9...e:d4 10.g3 0-0 11.Bf4 Qd8 12.Nd6 h6 13.h4 a6 14.Bc4 b5 15.Bb3 Na5 16.Rc1 N:b3 17.Q:b3 Nc6 18.Rc5 Qe7 19.h5 Kh7 20.h:g6+ f:g6 21.Kg2! further Rh1 , irresistible threats / Maric, D (2265) – Markovic, Z (2390) / YUG-ch sf 1995] **10.N:d4 e:d4 11.Qf3** And white "all the moves written" ... **11...0-0 12.Bf4 Qd8 13.Nd6**

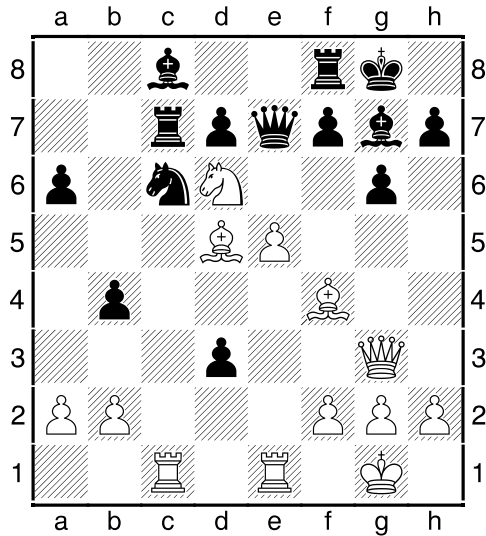


13...Nc6 14.Qa3 a6 15.Bc4 Ra7 16.Rac1 Qe7 17.Rfe1

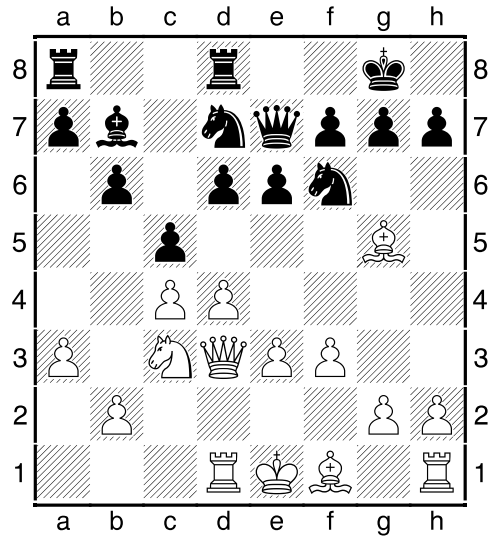


The pieces have taken ideal positions, and burst of thunder soon... **17...b5 18.Bd5 b4** [In case of 18...Bb7 19.Qc5 Ba8 20.Bg5 Bf6 21.f4 d3 22.Rf1 Rc7 23.Rf2 h6 24.B:f6 Q:f6 25.Rc3 a pawn is captured, and when

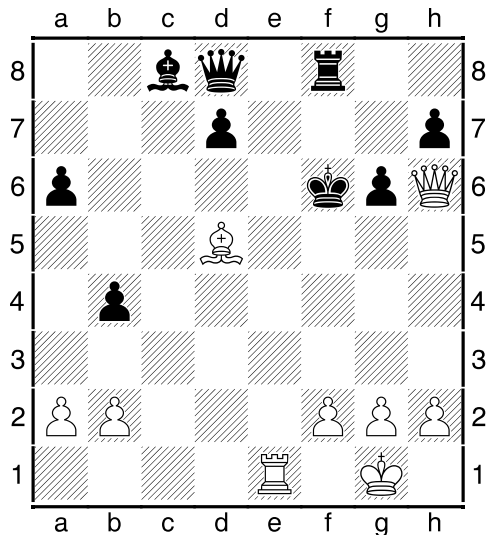
the material equality white lead strong at-
tack] 19.Qg3 d3 20.e5 Rc7



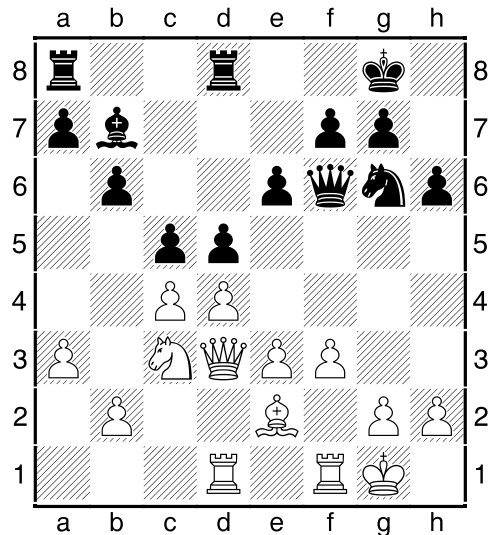
9.Ne2 Nbd7 10.Qd3 Qe7 11.Nc3 c5
12.Rd1 Rfd8 13.f3N



21.Nf5! [Of course, white bypass naive
trap 21.Bg5 B:e5 22.B:e7 B:g3 23.B:f8 d2]
21...Qe8 22.N:g7 K:g7 23.Q:d3 N:e5
24.Qe3 R:c1 25.B:e5+ f6 26.B:f6+ K:f6
27.Q:c1 Qd8 28.Qh6



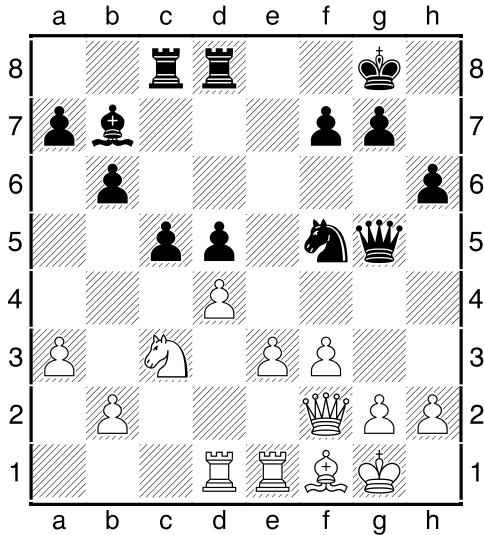
[13.d5 h6 14.Bh4 Ne5 15.Qc2 e:d5 16.c:d5
Ng6 17.Bg3 Nh5 18.Be2 N:g3 19.h:g3 a6
20.a4 Bc8 21.0-0 Ne5 22.e4 Ng4 23.Qd2
Nf6 24.Bd3 Bd7 25.Rfe1 Qe5 26.Qf4 g5
27.Qe3 Re8 28.Bc4 Ng4 29.Qe2 h5 with
the initiative for black / Flumbort, A (2516)
– Kveinys, A (2544) / Bundesliga 2007]
13...h6 14.Bh4 Nf8 15.Be2 Ng6 16.B:f6
Q:f6 17.0-0 d5



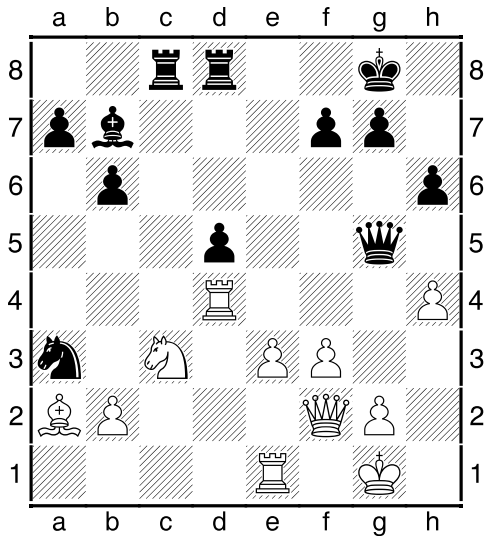
There is no way back... 28...d6 29.Qh4+
Kf5 30.g4+ 1-0

(07) Socko, Bartosz (2646) -
Kveinys, Aloyzas (2491) [E32]
RTU Open, Riga (9), 11.08.2013
[IM Sitnikov, A]
1.d4 Nf6 2.c4 e6 3.Nc3 Bb4 4.Qc2 0-0
5.a3 B:c3+ 6.Q:c3 b6 7.Bg5 Bb7 8.e3 d6

The position is equalized, and further de-
pends on the art of maneuvering by both
sides. 18.c:d5 e:d5 19.Rfe1 Rac8 20.Qd2
Nh4 21.Bf1 Nf5 22.Qf2 Qg5

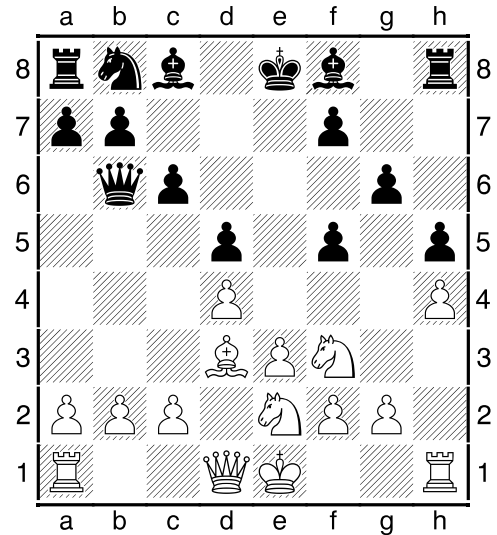


[Both after 22...c:d4 23.e:d4 Re8 the dynamic balance on board, because some passivity of black bishop is compensated by the reliable provision of king] **23.Bd3 Nd6 24.Bb1 Nc4 25.Ba2 c:d4 26.R:d4 N:a3 27.h4**

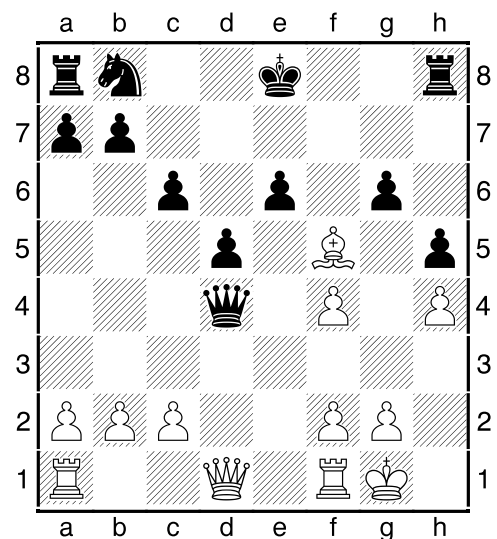


27...Qe5? The inexplicable mistake. Do black expected "with all the amenities" to save a pawn... [Very well looked 27...Qe7 28.Ra4 Nc4 29.e4 N:b2 30.e:d5 Qc5 31.Q:c5 R:c5 32.R:a7 R:c3 33.R:b7 Nd3 34.Ree7 Rc2 and white can be satisfied only with perpetual check] **28.Qd2 Qc7 29.Rd1** Tangle black pieces already not unravel... **29...b5 30.N:d5 B:d5 31.b:a3 1-0**

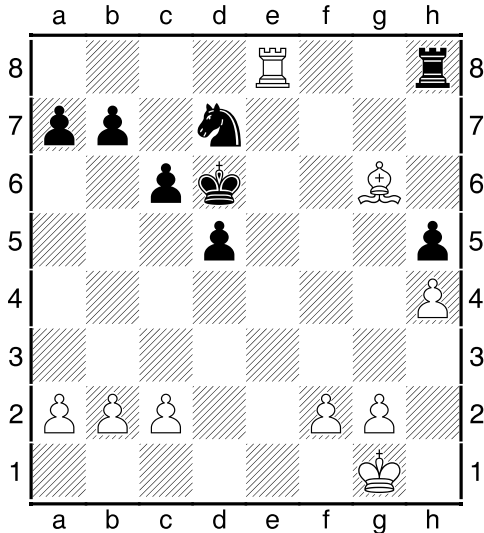
(08) Nabaty, Tamir (2567) - Nevednichy, Vladislav (2573) [D01]
 22nd OPEN KAVALA www.chesskavala.gr
 (8), 12.08.2013
[IM Sitnikov, A]
1.d4 Nf6 2.Nc3 d5 3.Bg5 h6 4.B:f6 e:f6 5.e3 c6 6.Bd3 f5 7.h4 h5 8.Nf3 g6 9.Ne2 Qb6?!N



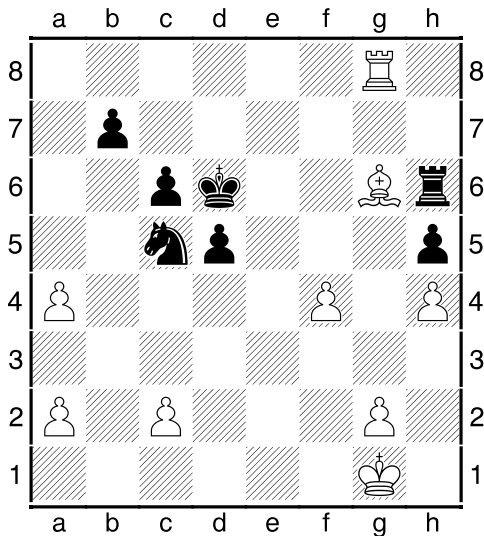
[White could safely continue 9...Be6 10.Nf4 Bd6] **10.0-0 Be6** Of course, it is dangerous to take a pawn, because after c2-c4 black center bursting at the seams. Thus, queen sortie was a blank shot. **11.Nf4 Bd6 12.Ng5** [Good prospects for white in option 12.N:e6 f:e6 13.Ng5 Kd7 14.c4 Be7 15.Nf3 with further pawn assault on queenside, shaking the Royal fortress] **12...B:f4 13.e:f4 Q:d4 14.N:e6 f:e6 15.B:f5**



15...Q:d1? Do grandmasters like to play the endgame without pawn?.. [After the cold-blooded capture 15...Q:f4 16.B:e6 Nd7 17.Qd3 Qf6 18.Rae1 0-0-0 it is unclear whether white has any advantage] **16.B:g6+ Ke7 17.Ra:d1 Nd7 18.Rfe1 Raf8 19.f5 Rf6 20.R:e6+ R:e6 21.f:e6 K:e6 22.Re1+ Kd6 23.Re8!**



23...Rh6 24.Rg8 Black rook is driven to a punishment cell... **24...Nc5 25.b3 a5** Black is trying to divert rival attention by movements on queenside. **26.f4 a4 27.b:a4!**



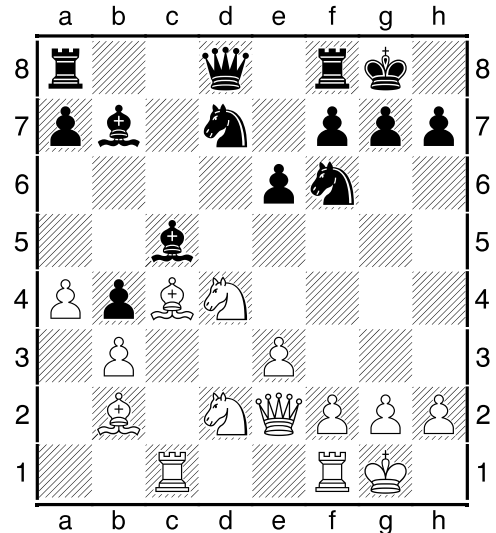
This is a situation where aesthetic considerations are not taken into account. Let the beauty of pawn structure is disturbed, but by reply capture black has to make side curtsy knight, and at this time on the opposite board side the white infantryman cheerfully aspires to the goal... **27...N:a4 28.f5 Nc5 29.f6 Nd7 30.f7 Ke7 31.g4! h:g4 32.Re8+ Kf6 33.h5 1-0**

(09) Kharitonov,Alexandr (2547) - Nabaty,Tamir (2567) [D20]

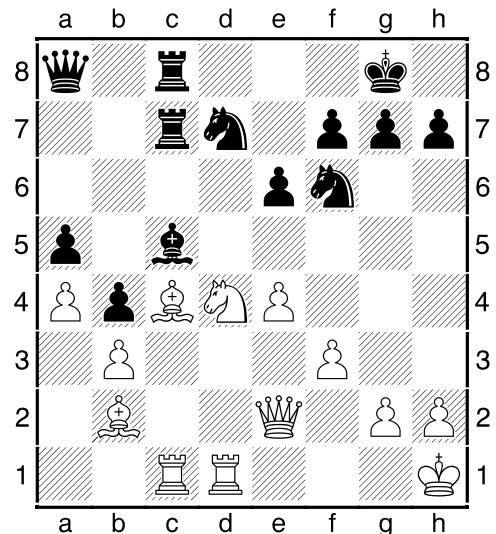
22nd OPEN KAVALA www.chesskavala.gr (9), 13.08.2013

[IM Sitnikov, A]

1.d4 d5 2.c4 d:c4 3.e3 b5 4.a4 b4 5.B:c4 Bb7 6.Nf3 e6 7.b3 Nf6 8.Bb2 c5 9.0-0 c:d4 10.N:d4 Bc5N 11.Nd2 0-0 12.Rc1 Nbd7 13.Qe2

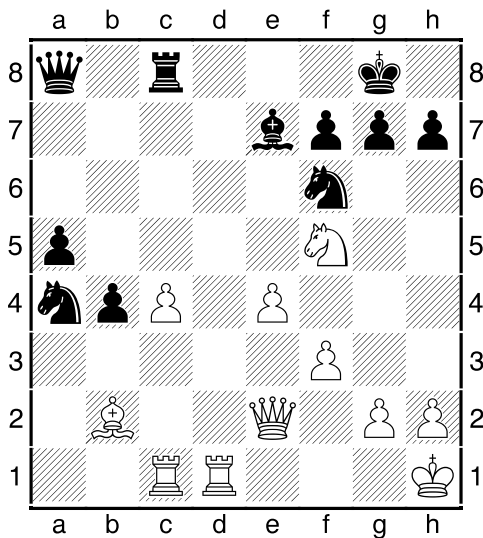


13...a5?! Significant inaccuracy. Now the white pieces have outpost b5, and the black pawn can become a target for attack. Should prefer 13... Rc8 14. Rfd1 Qb6 , with mutual chances. **14.Bb5 Rc8 15.Nc4 Bd5 16.Rfd1 Rc7 17.f3! Qa8 18.Kh1 Rfc8 19.e4** Built typical wedge that permanently deprives the prospects for black knight and bishop. Therefore, black goes to exchange... **19...B:c4 20.B:c4**

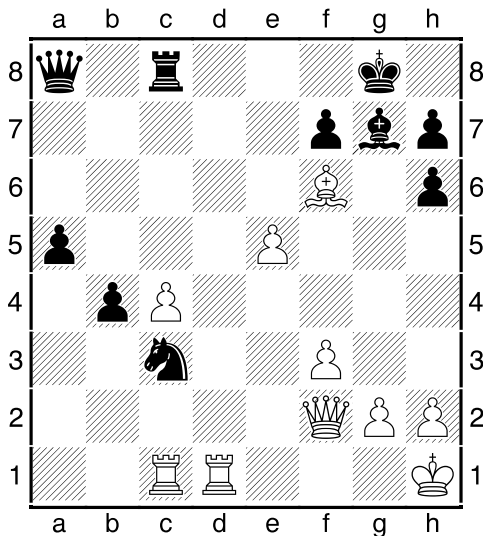


20...Be7? Amazing carelessness. And the

matter takes a serious turn. It was almost time for discard prejudices and to give the second bishop: after 20... B:d4 21. B:d4 positional advantage of white obvious, but nothing shows up and faced a long struggle, where systematic white play must justify their ambitions. **21.N:e6** [Also led to victory 21.e5 Nd5 22.B:d5 e:d5 23.R:c7 R:c7 24.e6 Nf6 25.e:f7+ K:f7 26.Ne6 Rc6 27.Ng5+ Ke8 28.Re1 Qb7 29.B:f6 R:f6 30.Qe5 h6 31.Ne6 and black defenseless] **21...R:c4 22.b:c4 Nb6** [By 22...f:e6 23.e5 Nc5 24.e:f6 B:f6 25.B:f6 g:f6 black could render some resistance due to the siege knight position] **23.Nd4 N:a4 24.Nf5**



Signal to a direct assault... **24...Bf8 25.Nh6+ g:h6 26.B:f6 Bg7 27.e5! Nc3 28.Qf2**



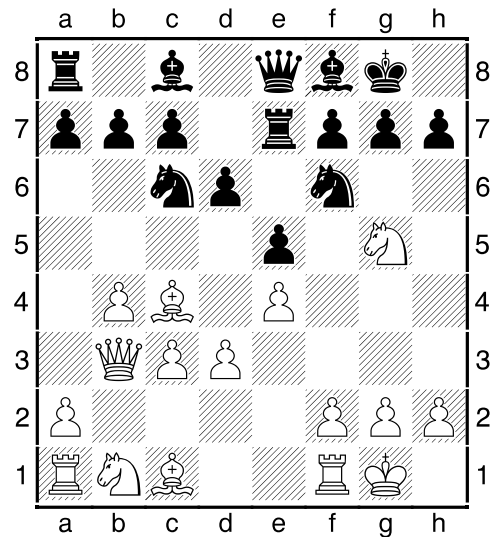
Two passed pawns supported by pieces could give black chances for win, but windy position of the king leaves no doubt as to the result of the battle. **28...B:f6 29.e:f6 Kh8 30.Rd7 Qc6 31.Qd4 Re8 32.Rd8 Qe6 33.Qg4 Q:g4 34.R:e8+ Qg8 35.Rce1 1-0**

(10) Ashwin, Jayaram (2478) - Mastrovasilis, Athanasios (2541) [C65]

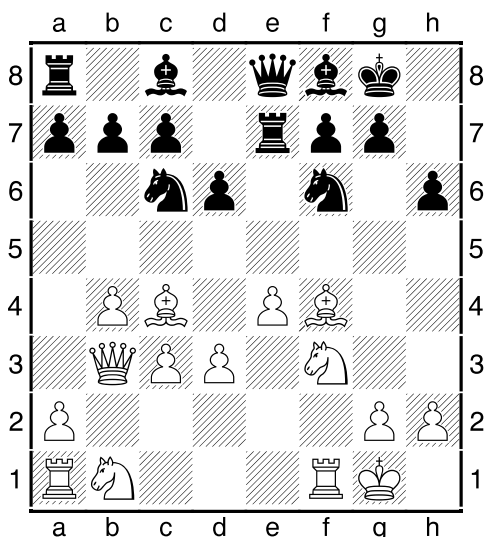
22nd OPEN KAVALA www.chesskavala.gr (9), 13.08.2013

[IM Sitnikov, A]

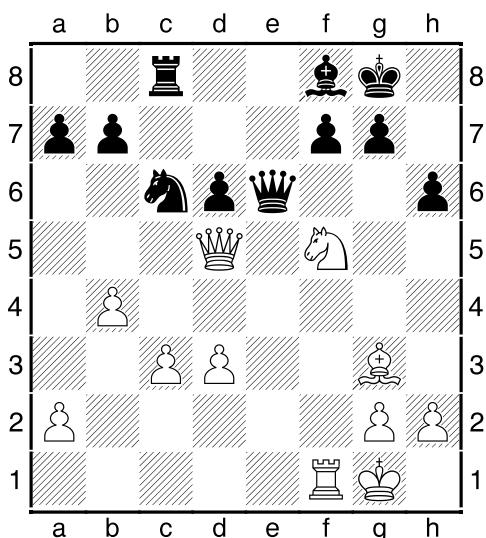
1.e4 e5 2.Nf3 Nc6 3.Bb5 Nf6 4.d3 Bc5 5.c3 0-0 6.0-0 Re8 7.b4 Bf8 8.Bc4 d6 9.Ng5 Re7 10.Qb3 Qe8



11.f4?!N [White achieved nothing after 11.a4 h6 12.Nf3 Be6 13.Nbd2 Rd8 14.Ba3 d5 15.e:d5 B:d5 16.Qc2 B:c4 17.N:c4 e4 18.d:e4 R:e4 19.Rfe1 Qe6 20.R:e4 Q:e4 21.Q:e4 N:e4 22.Bb2 Nd6 23.N:d6 B:d6 / Kosintseva, N (2551) – Golod, V (2585) / Biel MTO op 43rd 2010] **11...h6 12.Nf3 e:f4 13.B:f4**

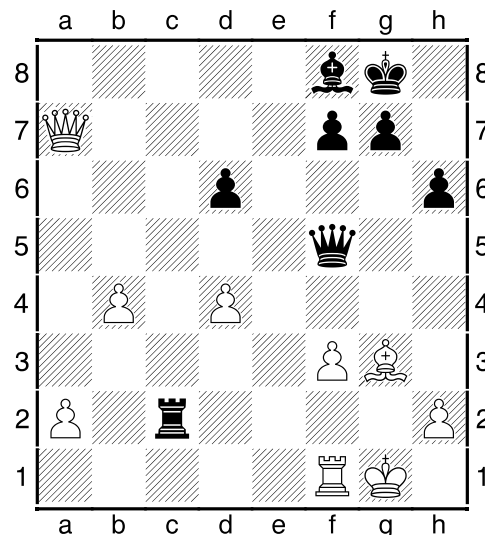


13...Be6 Missing an excellent opportunity
 13... Ne5 – and in view of the threat b7–b5
 white has to give up one of bishops for a
 knight, then black dictates terms on the
 board. **14.Nbd2 B:c4 15.N:c4 d5 16.e:d5**
N:d5 17.Nd6 c:d6 18.Q:d5 Ne5 19.Nd4
Qd7 [It is also good 19...Qc8 20.Bd2 a5
 with approximate equality] **20.Bg3 Rc8**
21.Rae1 Nc6 22.R:e7 Q:e7 23.Nf5 Qe6

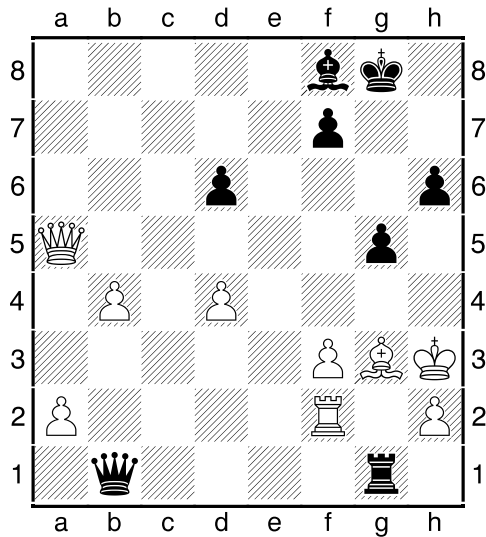


24.Qf3 [When switching to endgame
 24.Q:e6 f:e6 25.N:d6 B:d6 26.B:d6 Rd8
 27.Bc5 b6 28.b5 Ne5 29.d4 Nd3 30.Rf3
 Ne1 31.Re3 Nc2 32.Re2 b:c5 33.R:c2 c:d4
 34.c:d4 R:d4 35.Rc8+ Kh7 36.Ra8 Rd7
 37.Kf2 Kg6 38.Ke3 Kf5 39.a4 Ke5 with
 such active king black can live in peace]
24...Ne5 25.Q:b7 R:c3 26.d4 [In case of
 26.Q:a7 N:d3 27.a3 d5 28.Kh1 Rc2 29.Nd4

Qf6 30.Nf5 Rc1 31.R:c1 N:c1 32.Qe3 Q:f5
 33.Q:c1 d4 34.Kg1 d3 35.h3 Qe4 36.Bf4
 g5 37.Be3 Bd6 38.Kf2 Kg7 an interesting
 situation arises where related white passed
 pawns immobilised and black gradually in-
 tensifying pieces and in combination with
 pawns movement can fight for the victory]
26...Nf3+ 27.g:f3 Q:f5 28.Q:a7 Rc2



29.Rf2 [Quite reliable protection: 29.Qa8
 d5 30.Rf2 Rc4 31.b5 Qh3 32.Rf1 Rc2
 33.Bf2 Q:f3 34.b6 Qg4+ 35.Kh1 Qe4+
 36.Kg1 Qg6+ 37.Bg3 Q:b6 38.Q:d5 and
 here, despite missing pawn cover, white
 king is well protected by faithful security –
 queen, rook and bishop] **29...Rc1+**
30.Kg2? White underestimates about the
 danger threatening them, and quickly
 dies... [Cost of a pawn, could change
 rooks: 30.Rf1 R:f1+ 31.K:f1 Q:f3+ 32.Kg1
 Qd1+ 33.Kg2 Qd2+ 34.Bf2 Q:b4 35.a4 –
 passed "a" pawn is so strong that in order
 to avoid the worst, black should look for
 perpetual check] **30...Qb1 31.Qa5 Rg1+**
32.Kh3 g5



The king got into a trap. **33.Qd5 Qg6**
34.Bh4 Qh5 35.Qe4 d5 0-1

Editorial staff:

IM Anton Sitnikov (ELO 2497)
IM Timofey Iljin (ELO 2507)
IM Anatoliy Polivanov (ELO 2356)
IM Tarlev Konstantin (ELO 2520)
IM Sergey Perun (ELO 2345)
Dmitry Posokhov (ELO 2294)

Chief editor Roman Viliavin (ELO 2248)
email: chesszone@ya.ru